

SEED CONSULTANTS, INC.

Simply the Best Value in the Seed Industry
www.seedconsultants.com



Frank Lee
Test Plot Harvest Anson County, NC

2013-2014 Seed Selection Guide

Contact us at 877-702-7333

“Moving Yields Forward”

Advance Agra Service



Seed Consultants

Charlie Thomas Winston Salem, NC

DIRECTIONS: 4728 Gumtree Road Winston Salem, NC

ROW WIDTH: 30"
 PLANTING DATE: 04/16/13
 HARVEST DATE: 09/17/13
 PREVIOUS CROP: SOYBEANS
 PLANTING RATE: 30,000
 TILLAGE NO-TILL: X

Zone: 9
 Herbicide: Pre: 2 Quarts Simazol
 Post: 1 pt Attrazine; 1.5 oz SteadfastQ
 Fertility: N: 40 gal. UAN; Quantum
 P:
 K:

Seed Consultants, Inc
 648 Miami Trace Rd SW PO Box 370
 Washington Court House, Ohio 43160
 1-800-708-2676

MINIMUM: Manure (Type&Tons): cow manure/layer litter

CONVENTIONAL:

TESTER: SC 11AGT30™
 TESTER RANK: 7

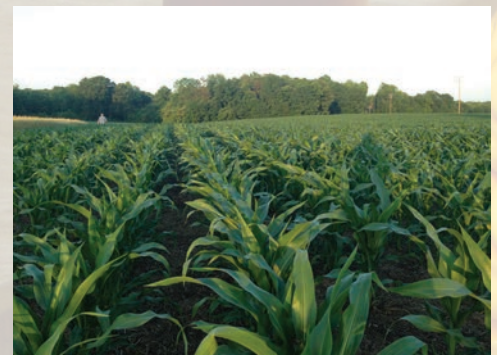
Tester Low: 217.88
 Tester High: 248.69
 Tester Ave: 237.45

www.seedconsultants.com

I hereby grant Seed Consultants Inc. permission to use for all purposes the above information as well as my name and picture of me and my property
 Cooperators Signature: On File Date: 9/17/2013

Hybrid, Brand or Variety	No of Rows	% Mst	Test Wgt	Lbs Hvst	Row Length	Hvst Width	Hvst Area	Raw Yield	Tester + or -	Adjusted Yield	Rank
SCS 1154AM-R™	2	19.50	59.6	1150	654.00	5.0	0.0751	259.08	38.37	275.82	1
SCS 11HR63™	2	18.00	57.6	1120	652.00	5.0	0.0748	257.81	33.68	271.14	2
SCS 1131AM-R™	2	18.50	58.4	1140	658.00	5.0	0.0755	258.43	24.24	261.69	3
SCS1184AMR™P1250	2	18.9	58	1124	645	5.000	0.074	258.67	21.90	259.35	4
SC 11AGT72™	2	18.9	58.5	1070	648	5.000	0.074	245.10	7.23	244.69	5
SCS 11HQ33™	2	17.10	59.3	1046	660.00	5.0	0.0758	240.47	0.24	237.69	6
SCS 1093AAHQ™	2	16.40	59.3	1038	668.00	5.0	0.0767	237.76	-1.61	235.84	8
SC 11AQ43™	2	19.10	56.5	986	656.00	5.0	0.0753	222.55	-7.15	230.30	9
SC 11AGT30™	2	18.20	57	1064	662.00	5.0	0.0760	240.63	-7.69	229.77	10
SC 11AQ03™	2	16.40	58.6	1026	664.00	5.0	0.0762	236.43	-8.06	229.39	11
DKC 67-58	2	17.6	58	976	650	5.000	0.075	226.45	-11.36	226.09	12
SCS 1094AM-R™	2	17.30	58.9	1020	670.00	5.0	0.0769	230.43	-12.83	224.62	13
SCS 11HR02™ P1250	2	16.10	58.4	968	666.00	5.0	0.0764	223.19	-16.00	221.46	14
SCS 1083AMX-R™	2	16.70	59.4	964	672.00	5.0	0.0771	218.71	-26.50	210.95	15
SCS 10HR62™	2	15.30	55.5	900	674.00	5.0	0.0774	207.00	-32.38	205.07	16

Charlie Thomas Winston-Salem, NC





On-Farm Hybrid Testing 2013

Frank Lee
Norwood, NC

SEED CONSULTANTS STRIP PLOT FORM (CORN)

Seed Consultants, Inc
648 Miami Trace Rd SW PO Box 370
Washington Court House, Ohio 43160
1-800-708-2676
www.seedconsultants.com



Frank Lee

Cooperators Name

Armstrong

Seedsman

DIRECTIONS: **Norwood, NC (Anson County)**

ROW WIDTH: <u>30</u>	Insecticide Program: _____	Zone: <u>9</u>
PLANTING DATE: <u>04/16/13</u>	Herbicide Program: _____	Tester Low: <u>147.31</u>
HARVEST DATE: <u>09/18/13</u>		Tester High: <u>177.25</u>
PREVIOUS CROP: <u>SOYBEANS</u>		Tester Ave: <u>159.89</u>
PLANTING RATE: <u>27,500</u>		
TILLAGE NO-TILL: <u>X</u>	Fertility Total: N: _____	
MINIMUM: _____	P: _____	
CONVENTIONAL: _____	K: _____	
TESTER: <u>Dyna-Gro 57V59</u>	Manure (Type&Tons): _____	Tester Rank: <u>17</u>

I hereby grant Seed Consultants Inc. permission to use for all purposes the above information as well as my name and picture of me and my property
Cooperators Signature: _____ on file Date: 9/20/2013

Hybrid, Brand or Variety	No of Rows	% Mst	Test Wgt	Lbs Hvst	Row Length	Hvst Width	Hvst Area	Raw Yield	Tester + or -	Adjusted Yield	Rank
SCS10HR94 P1250	2	12.70	60	1646	1358.00	5.0	0.1559	193.67	34.24	194.13	1
SCS11AQ72	2	14.40	60.5	1732	1353.00	5.0	0.1553	200.56	26.42	186.31	2
SCS1094 YHR P1250	2	12.7	60.1	1556	1363	5.0	0.156	182.41	25.94	185.82	3
SC11AGT30	2	13.80	56.2	1546	1355.00	5.0	0.1555	180.01	24.83	184.72	4
SCS1093 AHQ P1250	2	12.50	59.6	1518	1351.00	5.0	0.1551	179.94	21.87	181.76	5
Comp 3	2	13.60	58.3	1642	1355.00	5.0	0.1555	191.63	20.32	180.21	6
SC11RR31 P1250	2	13.4	61.6	1492	1364	5.0	0.157	173.37	16.90	176.79	7
SCS1154 YHR	2	13.30	62.6	1606	1356.00	5.0	0.1556	187.94	16.64	176.52	8
SC11AQ43	2	14.00	58.3	1510	1359.00	5.0	0.1560	174.89	15.46	175.35	9
SCS11HR02	2	12.90	59.2	1454	1358.00	5.0	0.1559	170.68	13.06	172.95	10
SCS11HQ33	2	12.90	62.8	1400	1357.00	5.0	0.1558	164.47	6.85	166.73	11
SCS1184 YHR P1250	2	13.70	60.5	1416	1361.00	5.0	0.1562	164.33	6.53	166.41	12
SCS11HQ39 P1250	2	13.4	60.7	1362	1367	5.0	0.157	157.92	6.51	166.40	13
SCS1131 AMR	2	13.00	60.2	1380	1352.00	5.0	0.1552	162.53	4.46	164.34	14
Pioneer 2088 Comp 2	2	12.40	57.2	1436	1350.00	5.0	0.1550	170.54	3.61	163.49	15
SCS11HR63	2	13.10	59.2	1362	1360.00	5.0	0.1561	159.28	1.48	161.36	16
SCS1083 AMX	2	13.10	61.6	1310	1354.00	5.0	0.1554	153.88	-1.29	158.59	18
SCS10HR62 P1250	2	12.2	59.4	1232	1366	5.0	0.157	144.93	-6.48	153.41	19
SC11AQ03	2	12.40	58.2	1328	1349.00	5.0	0.1548	157.83	-9.10	150.78	20
DKC 67-58 Comp 1	2	14.10	61.5	1388	1352.00	5.0	0.1552	161.40	-12.73	147.16	21

Frank Lee
Norwood, NC



**Our
Customers
are the
Heart of our
Business**



**Marty Casstevens
Boonville, NC**



**Stanley and Will Smith
King, NC**



**Larry Essick,
Kernersville, NC**



**W. C. Idol
Walnut Cove, NC**



**Craig Corriher
China Grove, NC**



**Nathan Souther
Union Grove, NC**



**Joe Binkley
Harmony, NC**



**Brian Moore,
Mt. Ulla, NC**



**Brooks Peedin
Selma, NC**



**Stacey and Lawana Manning
Winston-Salem, NC**



**Lynn Hyman
Tarboro, NC**

CORN KEY

		Bag Color	Insect Protection Rootworm	Herbicide Protection Glyphosate
AXX	Agrisure® CB/LL/RW Corn Borer; Rootworm; LibertyLink®	Blue	X	
HXX	Herculex® XTRA Insect Protection	Blue	X	
CONV	Conventional (Non-GMO)	Green		
HQ	Quad Stack--Herculex® XTRA; Roundup Ready® Corn 2; LibertyLink®	Purple	X	X
AQ	Agrisure® 3000GT - Corn Borer; Corn Rootworm, LibertyLink®, Glyphosate Tolerant	Purple	X	X
AMI	Optimum® AcreMax® I (AMI) insect protection	Purple	X	X
AHQ	Herculex® I, LibertyLink®, Roundup Ready® Corn2, Agrisure® Rootworm	Purple	X	X
AMX-R	Optimum® AcreMax® Xtra (AMX) insect protection	Purple	X	X
AMXT	Optimum® AcreMax® XTreme (AMXT) insect protection	Purple	X	X
AM-R	Optimum® AcreMax® (AM) insect protection	Red		X
HR	Herculex® I, LibertyLink®, Roundup Ready® Corn2	Red		X
YHR	YieldGard® Corn Borer; Herculex® I, LibertyLink®, Roundup Ready® Corn2	Red		X
RR	Roundup Ready® Corn 2	Red		X
AGT	Agrisure® GT/CB/LL - Corn Borer; LibertyLink®, Glyphosate Tolerant	Red		X
AGTV	Agrisure Viptera® 3110 - Corn Borer; LibertyLink®, Glyphosate Tolerant	Red		X
AQUA	Optimum® AQUAmax™ hybrids			
SCS	Supreme EX® Brand Seeds			
SC	Seed Consultants, Inc.™			



SCS 1093A Brand™



SC 1093AAHQ Brand™

Days to Maturity: 109

AVAILABLE TRAITS

AGRISURE RW, ROUNDUP®READY Herculex 1.1™

- Very Good Drought Tolerance
- Excellent Test Weight
- Maintains High Yield Ranking when Compared to Later Hybrids
- Good Dry Down
- Strong Roots, and Good Stalks

RECOMMENDED PLANTING POPULATIONS

	Marginal Soils	Best Soils
30"-36" Row Width	27 - 30,000	29 - 33,000
15"- 20" Row Width	29 - 32,000	30 - 36,000

New for 2014!



SCS 1094AMX-R Brand™

Supreme EX Brand®, Distributed by Seed Consultants, Inc.

Days to Maturity: 109

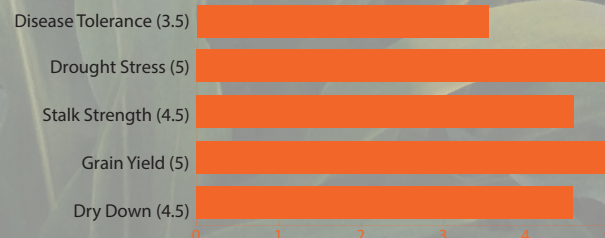
AVAILABLE TRAITS

ROUNDUP®READY Herculex Xtra™ YGCB

- New Yield Leader for Maturity Group
- Strong Stalk and Roots
- Excellent Drought Tolerance for Maturity Group
- Excellent Early Companion to 1172
- Good Test Weight and Grain Quality

RECOMMENDED PLANTING POPULATIONS (Plants Per Acre)

	Marginal Soils	Best Soils
30"- 36" Row Width	27 - 30,000	29 - 33,000
15"- 20" Row Width	28 - 32,000	30 - 36,000





SCS 1102 Brand™



SCS 11HR02 Brand™

Supreme EX Brand®, Distributed by Seed Consultants, Inc.

Days to Maturity: 110

AVAILABLE TRAITS

ROUNDUP®READY Herculex® 1.1



- Medium Plant Type with Lower Placed Ears
- Average Stalk Strength and Good Roots
- Moves North and South of Zone/Widely Adapted

RECOMMENDED PLANTING POPULATIONS (Plants Per Acre)

	Marginal Soils	Best Soils
30"- 36" Row Width	26 - 30,000	29 - 32,000
15"- 20" Row Width	29 - 32,000	32 - 36,000



SC 11AQ03 Brand™

Days to Maturity: 110

AVAILABLE TRAITS

Agrisure CB/LL/GT/RW

- New Early Companion to SC11AGT30
- Proven Stress and Drought Tolerance
- Good Grain Quality
- Short, with Low Ear Placement
- Goes Across a Wide Range of Soil Types



	Marginal Soils	Best Soils
30"- 36" Row Width	24 - 27,000	27 - 31,000
15"- 20" Row Width	26 - 30,000	30 - 35,000



SCS 11RR21 Brand™

Days to Maturity: 111

AVAILABLE TRAITS

- Excellent Tolerance to GLS
- Very Good Stalks, Above Average Roots
- Excellent Dry Down and Grain Quality
- Excellent Standability

RECOMMENDED PLANTING POPULATIONS

	Marginal Soils	Best Soils
30"- 36" Row Width	23 - 29,000	27 - 34,000
15"- 20" Row Width	25 - 32,000	33 - 37,000





SC 11AGT30 Brand™

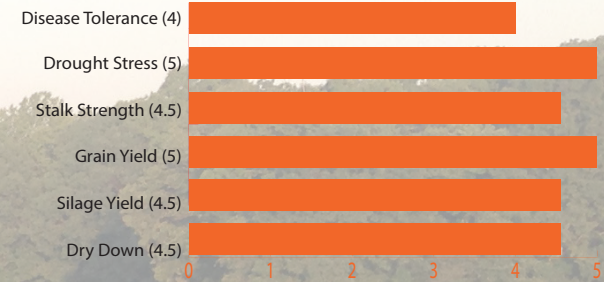
Days to Maturity: 113

AVAILABLE TRAITS

Agrisure CBLTGT

- Proven Stress and Drought Tolerance
- Dual Purpose with Good Grain Quality
- Exceptional Stalks and Roots
- Especially Adapted to the Mid-Atlantic

	Marginal Soils	Best Soils
30" - 36" Row Width	23 - 27,000	27 - 31,000
15" - 20" Row Width	26 - 30,000	30 - 35,000




SCS 11RR31 Brand™



SCS 11HQ31 Brand™



SCS 1131 Brand™ (Non -GMO)



SCS 1131AM-R Brand™

Days to Maturity: 114

AVAILABLE TRAITS

ROUNDUP®READY Herculex® Quad

- Strong Stalk and Root Strength
- Excellent Grain quality and Test Weight
- Exceptional Stress and Drought Tolerance
- Excellent Dual Purpose Hybrid; High Milk/Ton

RECOMMENDED PLANTING POPULATIONS

	Marginal Soils	Best Soils
30" - 36" Row Width	23 - 29,000	27 - 34,000
15" - 20" Row Width	25 - 32,000	33 - 37,000



TABLE 8. STATEWIDE (NORTH CAROLINA) AVERAGE PERFORMANCE OF MEDIUM MATURING (110-115) CORN HYBRIDS - 2013.

Hybrid or Brand-Hybrid	Yield BU/A	Moisture	Lodging %	Ear Ht Inches
Insect Resistant				
Seed Consultants SCS 1131AM-R™	187.1**	0.176	0	48
Dyna-Gro D55VP77VT3P	184.1*	0.171	0	37
B-H Genetics BH8928VTTP	183.0*	0.181	0	46
Dyna-Gro D55GT73GT	180.5*	0.177	1	43
Augusta A5565VT3Pro	179.5*	0.174	0	36
Dyna-Gro D52VC91VT2P	178.2*	0.169	0	38
Syngenta N79Z-3000GT Brand	178.0*	0.182	1	49
Dekalb DKC63-33	176.0	0.163	0	40
Golden Acres G4598(VT2PRR)	175.6	0.163	0	39
Dyna-Gro D51VP32VT3P	175.5	0.167	0	41
B-H Genetics BH8844VTTP	175.5	0.176	0	39
Dekalb DKC64-99	175.2	0.173	0	40
Golden Acres G5531(VT3PRR)	175.1	0.169	0	38



SC 11AGT43 Brand™

NEW!

Days to Maturity: 114

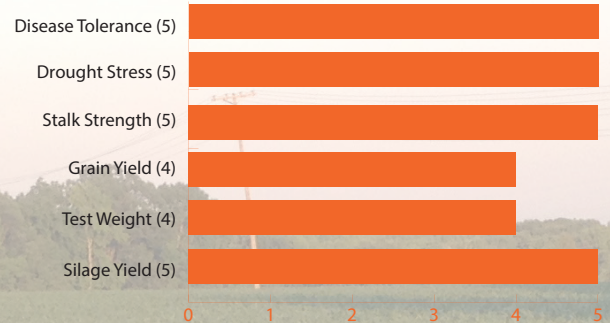
AVAILABLE TRAITS:

Agrisure GT/CB/LL

- Excellent Staygreen and Late Season Plant Health
- Exceptional Heat Tolerance for Stress Environments
- Determinate Ear Type, Requires Higher Populations
- Great Hybrid for Dual-Purpose Planting

RECOMMENDED PLANTING POPULATIONS

	Marginal Soils	Best Soils
30"- 36" Row Width	26 - 30,000	30 - 33,000
15"- 20" Row Width	29 - 34,000	33 - 37,000



SCS 1154AMR Brand™

Days to Maturity: 116

AVAILABLE TRAITS

ROUNDUP®READY Herculex® 1.1

HXYGCB, RR

- Work Horse Genetics that Move South
- Tall Plant Height
- Strong Stress and Drought Tolerance
- Excellent Grain Quality

RECOMMENDED PLANTING POPULATIONS

	Marginal Soils	Best Soils
30"-36" Row Width	25 - 29,000	29 - 32,000
15"-20" Row Width	27 - 31,000	30 - 36,000



SCS 11HR63 Brand™

Days to Maturity: 116

AVAILABLE TRAITS

ROUNDUP®READY Herculex® 1.1

- Amazing Top End Yield Potential!
- Tall Plant Height; Excellent Dual Purpose Hybrid
- Strong Stress and Drought Tolerance
- Excellent Grain Quality
- High Milk/Ton

RECOMMENDED PLANTING POPULATIONS

	Marginal Soils	Best Soils
30"-36" Row Width	25 - 29,000	29 - 32,000
15"-20" Row Width	27 - 31,000	30 - 36,000

Yield Leader in 2013!



SOLD OUT





SCS 11HQ70 Brand™



SCS 1170 Brand™

Supreme EX Brand®, Distributed by Seed Consultants, Inc.

Days to Maturity: 117

AVAILABLE TRAITS

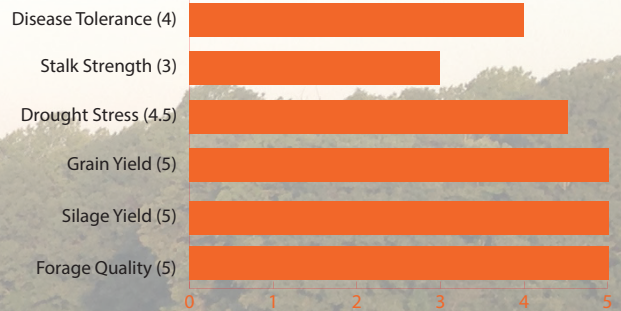
Herculex® Quad

- Silage Yield Leader in 2013
- Excellent Silage Hybrid/Tremendous Tonnage Yield
- Very Tall Plant Stature with High Grain Yield
- Very good on GLS; average on NCLB
- Top Rating for Forage Quality



RECOMMENDED PLANTING POPULATIONS

	Marginal Land	Best Land
30"- 36" Row Width	25 - 28,000	27 - 31,000
15"- 20" Row Width	27 - 30,000	30 - 34,000




SC 1172 Brand™ (Non -GMO)

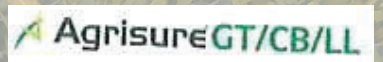


SC 11AGTV72 Brand™

Days to Maturity: 117

AVAILABLE TRAITS

Agrisure GT/CB/LL/RW
Agrisure GT/CB/LL/VIP
Agrisure 3000 GT



- Tall Plant Height; Excellent Dual Purpose Hybrid
- Strong Stress and Drought Tolerance
- Unique Genetics for the South East
- Work Horse Variety with Excellent Grain Quality

RECOMMENDED PLANTING POPULATIONS

	Marginal Soils	Best Soils
30"-36" Row Width	25 - 29,000	29 - 31,000
15"-20" Row Width	27 - 31,000	30 - 33,000




SCS 11AGT74 Brand™

NEW!

Supreme EX Brand®, Distributed by Seed Consultants, Inc.

Days to Maturity: 117

AVAILABLE TRAITS

Agrisure GT/CB/LL



- New Companion Hybrid to SC 1172
- Rugged Hybrid With Excellent Plant Health for Southern Growing Conditions
- Unique Genetics for the South East
- Strong Stress and Drought Tolerance
- Work Horse Variety with Excellent Grain Quality

RECOMMENDED PLANTING POPULATIONS

	Marginal Soils	Best Soils
30"-36" Row Width	27 - 30,000	30 - 33,000
15"-20" Row Width	29 - 33,000	32 - 36,000





SCS 1184AM-R Brand™

NEW!

Supreme EX Brand®, Distributed by Seed Consultants, Inc.

Days to Maturity: 118

AVAILABLE TRAITS

ROUNDUP®READY Herculex 1.1™



- New, High-Yielding Hybrid adapted to the Southern Corn Belt
- Excellent Dual Purpose Hybrid
- Tall Plant Stature with High Grain Yield
- Very good on GLS; average on NCLB
- Adapted to the Mid - South



RECOMMENDED PLANTING POPULATIONS

	Marginal Land	Best Land
30"-36" Row Width	25 - 29,000	29 - 32,000
15"-20" Row Width	27 - 31,000	30 - 36,000

HYBRID	PLANT HGT	EAR HGT	STALK STRENGTH	ROOT STRENGTH	TEST WGT	SEEDLING VIGOR	DROUGHT TOLERANCE	DRY DOWN	NO-TILL RATING	STAYGREEN	PLANTING POPULATION	MGT ADAPT	NITROGEN CLASSIFICATION	SOIL TYPE	CORN AFTER CORN	EAR TYPE
SCS 1062™ brand	M/S	M	VG	EXC	VG	G	VG	VG	VG	G	H	M-H	1	AVE+	G	SEMI
SCS 1070™ brand	M/T	MH	VG	VG	EXC	VG	VG	VG	VG	VG	M-H	M-H	2	V	VG	SEMI
SCS 1083™ brand	M	ML	EXC	EXC	EXC	VG	EXC	G	VG	VG	H	L-H	1	V	VG	SEMI
SC 1092™	M	M	G	G	G	EXC	VG	VG	G	G	M-H	M-H	3	AVE+	VG	SEMI
SCS 1093A™ brand	M	M	VG	EXC	VG	EXC	VG	G	VG	VG	M-H	M-H	3	AVE+	VG	SEMI
SCS 1094™ brand	M/S	ML	VG	EXC	VG	A	EXC	VG	G	VG	M-H	M-H	2	V	G	SEMI
SCS 1102™ brand	M	M	VG	VG	EXC	VG	EXC	VG	EXC	EXC	M-H	L-H	1	V	G	SEMI
SC 1103™	M	M	VG	VG	G	VG	VG	EXC	VG	G	M-H	L-H	3	V	VG	SEMI
SCS 1121™ brand	M/T	MH	EXC	VG	VG	VG	VG	EXC	VG	VG	M-H	L-H	2	V	G	SEMI
SC 1130™	M/T	MH	VG	VG	G	VG	EXC	VG	VG	VG	H	L-H	3	V	G	DET
SCS 1131™ brand	M/T	M	EXC	EXC	EXC	VG	EXC	VG	EXC	VG	M-H	L-H	2	V	VG	SEMI
SCS 1133™ brand	M/T	MH	G	VG	VG	VG	EXC	VG	VG	EXC	M-H	L-H	3	V	G	SEMI
SCS 1134™ brand	M	M	EXC	VG	G	G	EXC	G	VG	EXC	M-H	L-H	2	V	VG	SEMI
SCS 1139™ brand	M/T	MH	EXC	EXC	VG	EXC	EXC	EXC	EXC	EXC	M-H	L-H	3	V	VG	SEMI
SC 1143™	M/T	MH	EXC	EXC	G	VG	EXC	G	EXC	EXC	H	M-H	3	V	VG	DET
SCS 1144™ brand	MT	H	VG	VG	VG	NR	VG	VG	NR	EXC	M-H	L-H	3	V	VG	SEMI
SCS 1154™ brand	T	H	G	EXC	EXC	NR	EXC	VG	G	G	M-H	M-H	2	V	G	SEMI
SCS 1163™ brand	T	H	VG	VG	VG	G	VG	EXC	G	VG	M-H	L-H	3	V	G	SEMI
SCS 1170™ brand	M	H	VG	VG	G	G	G	G	VG	EXC	M-H	M-H	2	V	G	SEMI
SC 1172™	T	M	EXC	EXC	G	VG	VG	G	EXC	EXC	H	L-H	3	V	VG	DET
SCS 1174™ brand	M/T	M	EXC	VG	VG	VG	EXC	G	VG	EXC	H	L-H	3	V	VG	SEMI
SCS 1184™ brand	M	MH	EXC	VG	VG	VG	VG	VG	VG	EXC	M-H	M-H	3	AVE+	G	SEMI

©Supreme EX is a registered trademark of Pioneer Hi-Bred. Supreme EX® brand seed is distributed by Seed Consultants, Inc.

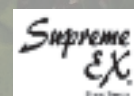
*Distributed by Seed Consultants, Inc.

Nitrogen Classification

Category 1 Hybrids—flower early for maturity; take up N early; flourish in a weed & feed program; derive less benefit from side dress applications of N; do relatively well at moderate N rates.

Category 3 Hybrids—flower somewhat later; longer grain fill; take up N over a longer period; & derive the most benefit from side dress applications of N as well as higher N rates.

Category 2 Hybrids—are somewhere in between.





Soybeans

Supreme EX Brand®, Distributed by Seed Consultants, Inc.

SCS 9544RR

MATURITY: 5.4 Medium Group V

KEY POINTS:

- Excellent emergence and early season vigor
- Multi-race PRR resistance (Rps1k), good field tolerance
- 1.8 bu yield advantage over SCS 9530RR™ in 2012 testing
- Medium short plant, holds height well as it moves south

Supreme EX Brand®, Distributed by Seed Consultants, Inc.

SCS 9494RR

MATURITY: 4.9 Late Group IV

KEY POINTS:

- Excellent Field Emergence
- Multi-race PRR resistance (Rps 1K) with good field tolerance
- Strong resistance to shattering

Supreme EX Brand®, Distributed by Seed Consultants, Inc.

SCS 9574RR

MATURITY: 5.7 Late Group V

KEY POINTS:

- Excellent emergence and early season vigor
- New pedigree with exceptional yield potential
- Exceptional SDS, S. root-knot nematode, and PRR
- Excellent harvest standability and resistance to shatter

Supreme EX Brand®, Distributed by Seed Consultants, Inc.

SCS 9583RR

MATURITY: 5.8 Late Group V

KEY POINTS:

- Exceptional tolerance to soils with high chloride salt accumulation
- Excellent field emergence
- Excellent harvest standability
- Very good SDS tolerance
- Very good Frogeye leaf spot tolerance

SC 5418STS

MATURITY: 4.1 Early Group IV

KEY POINTS:

- No. 1 Selling Non-GMO Line
- STS Tolerant Line
- Strong Disease Package
- Protein 41.9%
- Oil 20.9%

Supreme EX Brand®, Distributed by Seed Consultants, Inc.

SCS 9443RR

MATURITY: 4.4 Medium Group IV

KEY POINTS:

- 3 BPA Advantage Over SCS9450RR
- Excellent Harvest Standability

Performance: SCS9443RR 61.8 BPA

P94Y60 57.0 BPA

AG4630 55.3 BPA

Supreme EX Brand®, Distributed by Seed Consultants, Inc.

SCS 9474RR

MATURITY: 4.7 Late Group IV

KEY POINTS:

- Very strong tolerance to SDS & Stem Canker
- Excellent harvest standability and resistance to shattering
- Replaces SCS 9472RR™ with 3+ bu advantage
- Avoid fields with history of root-knot nematode

For more information about Seed Consultants and Supreme EX Brand® corn and soybean varieties refer to the Seed Consultants 2013-2014 Seed Guide

VARIETY	MATURITY	FLOWER COLOR	POD COLOR	HILUM COLOR	HARVEST STANDABILITY	APPROX. SEED SIZE	PHYTOPHTHORA RATING	GENE RESISTANCE	PUBESCENCE	EMERGENCE RATING	PLANT HEIGHT	SHATTER RATING	PLANT HABIT	SCN RESISTANCE	BSR	SWM	SDS	FROG EYE	Charcoal Rot	Aphid Antibiosis	Stem Canker Tolerance
CONVENTIONAL																					
SC 5418STS™	4.1	PU	BR	BL	7.9	M/L	7.5	NG	TW	NR	M	NR	B	R3	7.5	NR	8.0	NR	NR	NR	NR
ROUNDUP® READY																					
SCS 9421RR™* brand	4.2	PU	TN	BL	8.0	M	8.0	NG	LTW	9.0	M/S	7.0	MB	R3, R14	NR	NR	7.0	8.5	8.0	BA	NR
SCS 9434RR2™* brand	4.3	PU	BR	BL	8.0	NR	7.0	NG	LTW	NR	M	9.0	MB	R3,R14	NR	NR	7.0	9.0	NR	NR	NR
SCS 9443RR™* brand	4.4	W	TN	BL	8.5	NR	5.0	1K	LTW	8.5	M	7.5	MB	R3,R14	NR	NR	6.0	7.5	6.0	A	NR
SCS 9474RR™* brand	4.7	PU	BR	BL	8.0	NR	7.0	NG	LTW	NR	M	9.0	MB	R3,R14	NR	NR	NR	NR	NR	NR	9.0
SCS 9494RR™* brand	4.9	PU	TN	BL	9.0	M/L	6.0	1K	LTW	9.0	M	9.0	MB	R3,R14	NR	NR	7.0	4.0	6.0	AA	NR
SCS 9544RR™* brand	5.4	W	BR	BL	9.0	M	6.0	1K	TW	9.0	M/S	9.0	MB	R3, R14	NR	NR	6.0	NR	NR	A	NR
SCS 9574RR™* brand	5.7	PU	TN	BR	9.0	M	7.0	3C	TW	9.0	M	9.0	MB	R3	NR	NR	7.0	8.0	NR	A	5.0
Ratings 1 to 9 with 9 best																					
Aphid Antibiosis...predicted feeding & colony establishment tolerance levels...AA--above average ; A_ average; & BA _below average																					
...scouting and spraying are still required; but predicted population growth may be slower at AA ratings																					
*Supreme EX® Brand, Distributed by Seed Consultants, Inc.																					

We congratulate Jimmy Howard of Mooresville for establishing a new corn yield record for his farm in 2013 using SC1172, SC11AGT30 and SC11RR31! Jimmy has planted 100% of his corn acreage in Seed Consultants varieties for the past three years. Thanks Jimmy! Your loyal patronage enables us to continue advancing genetic lines adapted to your North Carolina growing conditions!

Ray Crotts
Mocksville, NC



Evan Haigler
Monroe, NC



Louis Shore
Yadkinville, NC



Jimmy Howard
Mooresville, NC



Jason Sink
Trinity, NC



Trent Cloaninger,
Statesville, NC



Tommy Wagoner
Jonesville, NC



Leslie Crouse
Lexington, NC



Gary Chapman
Taylorsville, NC



“Moving Yields Forward”

Dale Armstrong
PO Box 178, Rocky Mount, VA 24151
Phone 877.702.7333
Fax 540.737.0055 | Cell 540.421.3961
dale@advanceagraservice.com

Area Dealers
Charlie Thomas - Winston-Salem, NC
Phone 336.575.5461
charlie@advanceagraservice.com
Trent Cloaninger - Statesville, NC
Phone 704.657.3550
trentstractor@hotmail.com

11/15/2013

