

Virginia Tech Corn Silage Testing 2018

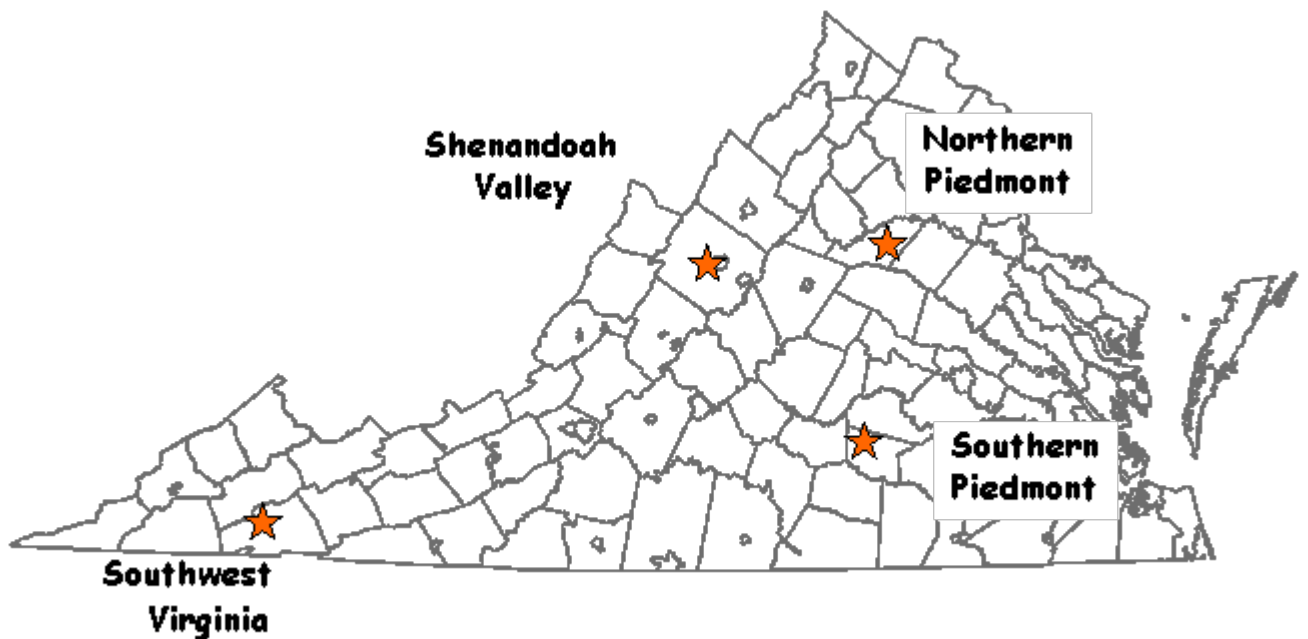


TABLE OF CONTENTS

Companies participating in the 2018 Corn Silage Hybrid Trials.....	1
2018 Corn Silage Hybrid Trials Narrative.....	1
2018 Corn Silage Plot Information.....	4
Table 1. List of Hybrids in 2018 VA Tech Corn Silage Hybrid Test.....	5
Handy Bt Trait Table.....	7
Table 2. Multi-year, Multi-site Relative Ton per Acre (Yield).....	9
Table 3. Multi-year, Multi-site Relative Milk per Ton (Quality)	11
Table 4. Multi-year, Multi-site Relative Milk per Acre (Yield x Quality).....	13
Table 5. 2018 Corn Silage Test Results at the Northern Piedmont Site.....	15
Table 6. Two Year Average Corn Silage Test Results (2017 and 2018) at the Northern Piedmont Site.....	16
Table 7. Three Year Average Corn Silage Test Results (2016, 2017 and 2018) at the Northern Piedmont Site.....	17
Table 8. 2018 Corn Silage Test Results at the Southern Piedmont Site.....	18
Table 9. Two Year Average Corn Silage Test Results (2017 and 2018) at the Southern Piedmont Site.....	19
Table 10. Three Year Average Corn Silage Test Results (2016, 2017 and 2018) at the Southern Piedmont Site ..	20
Table 11 2018 Corn Silage Test Results at the Southwest Site.....	21
Table 12. Two Year Average Corn Silage Test Results (2017 and 2018) at the Southwest Site.....	23
Table 13. Three Year Average Corn Silage Test Results (2016, 2017 and 2018) at the Southwest Site.....	24
Figure 1. Average Relative Yield versus Quality across Sites, 2018	25
Figure 2. High Yielding and High Quality Hybrids in at Least 3 Site/Year Combinations in 2018	26

THE 2018 VIRGINIA CORN SILAGE HYBRID TRIALS

Coordinated by H. Behl, E. Rucker, and W. Thomason
School of Plant and Environmental Sciences
Virginia Tech, Blacksburg, VA
Other contributors: David Yutzy; Doug Horn; Brad Lael;
Ned Jones; Phil Blevins.

COMPANIES PARTICIPATING IN THE 2018 CORN SILAGE TRIALS

Company	Brand	Address
Augusta Seed	Augusta Seed	PO Box 899, Verona, VA 24482
Caverndale Farms	Caverndale Farms	1921 Bluegrass Pike, Danville, KY 40422
Crop Production Services	Dyna-Gro	396 Washington Street, Boydton, VA 23917
Dow AgroSciences	Mycogen Seeds	9330 Zionsville Rd., Indianapolis, IN 46267
DowDuPont	Pioneer	425 Abbeydale Way, Columbia, SC 29229
Erwin-Keith, Inc.	Progeny Ag Products	1529 Hwy 193, Wynne, AR 72396
King's AgriSeeds, Inc.	KingFisher	1828 Freedom Road Suite 101, Lancaster, PA 17601
Masters Choice	Masters Choice	305 W. Vienna St., Anna, IL 62906
Mid-Atlantic Seeds	Mid-Atlantic	204 St. Charles Way #163E, York, PA 17402
Monsanto	Channel	800 N Lindbergh Blvd., St Louis, MO 63167
Seed Consultants, Inc.	Seed Consultants	648 Miami Trace Rd, Washington Court House, OH 43160
Syngenta	NK Brand	11055 Wayzata Blvd., Minnetonka, MN 55305

NARRATIVE

This report contains the results for performance trials from commercial corn hybrids produced for silage at four locations in Virginia in 2018 as well as two and three year average performance, when available. In order to avoid problems with comparisons over sites and years, multi-year yields are presented as a percentage of the total called relative yield at that particular site-year combination. All locations were planted with a Wintersteiger PlotKing 2600 planter and harvested with commercial silage equipment. Yields are presented on a dry matter and 35% dry matter basis for comparison. Quality analysis was performed using a Foss NIR XDS Rapid Content Analyzer. All hybrids entered in the Virginia trials were submitted for testing by commercial companies. The locations at which particular hybrids were entered were specified by the company. Companies entering hybrids were charged a fee for each hybrid per location to support the Virginia Corn Silage Performance Trials.

Yield Differences

Experimental plots vary in yield and other measurements due to location in the field and other factors which cannot be controlled. Statistics given in the tables are intended to help the reader make valid comparisons between hybrids. The magnitude of difference due to uncontrollable variation has been computed for the data and is listed at the bottom of columns as the LSD (.10) (least significant difference with 90% confidence). Differences less than the LSD are assumed not to be real differences with 90% confidence.

Hybrid Choices

Multi-year results are more reliable than single-year results.

When making hybrid selections it is important to realize that hybrids differ in their performance under differing environments. Some hybrids are more adapted to a wide range of environments. Hybrid performance may differ with year and location variations of rainfall, temperature, pests and other environmental variables. In these experiments, many hybrids have essentially the same yield, and great care should be taken in interpreting the results of a single year's tests, especially at only one location.

For these reasons it is important, whenever possible, to also look at a hybrid's average yield across locations when making selections. Multi-year averages give greater confidence to hybrid performance decisions. Relative yield tables compare the yield of a hybrid to the average yield of all hybrids in the test. These tables are an excellent summary of yield potential compared to other hybrids.

Understanding Relative Yield

Companies entering silage hybrids decide which hybrids are planted at which locations. In 2017, some hybrids were planted at all four locations and others at only one or two sites.

Combining and comparing absolute yield and other results from multiple sites is inappropriate when not all hybrids are planted at all locations. For example, one hybrid might have an unfair advantage in such a comparison because it was tested only at sites with ideal growing conditions. Another hybrid tested at sites with less-than-ideal growing conditions would have yields that tended to be lower. In this example, it would be difficult to determine whether yield differences were because of differences in genetic yield potential or simply because of differences in the environmental conditions under which they were tested. The solution is to compare hybrids based on relative yields rather than absolute yields.

To calculate relative yield, the yield for each hybrid at each site is divided by the average yield for all hybrids tested at that same site and multiplied by 100. Once each hybrid at each site has been assigned a relative yield, comparisons can be made between hybrids tested at the same site or different sites. For hybrids tested at multiple sites, we can also calculate a multi-site relative yield average.

Relative yields of 100 indicate hybrids that were average performers. Relative yields greater than 100 indicate yields above-average. Relative yields less than 100 indicate yields below-average. The magnitude of the relative yield numbers indicate how far above or below average

a hybrid performed. For example, a hybrid with a relative yield of 110 yielded 10% above the average yield for all hybrids at that site.

Selecting hybrids for both yield and quality.

Milk2006 is used to condense multiple corn silage quality and digestibility factors into one easy-to-compare “milk per ton” number. This system also generates a “milk per acre” rating for each hybrid, calculated by multiplying yield (tons per acre) by quality (pounds of milk per ton). The same problem described above for multi-site yield comparisons exists for yield by quality comparisons: not all hybrids were tested at all sites. Therefore, relative quality and relative yield x quality ratings were calculated.

Milk2006 is a system developed by University of Wisconsin researchers to simplify quality comparisons between corn silage samples. Included in the analysis are variety identification, kernel processing, dry matter, crude protein, NDF, in-vitro NDF digestibility, starch percent and yield per acre. Compared to Milk2000, Milk2006 values more accurately address the effects of fiber digestibility on silage quality. Milk2006 has proven to more accurately reflect actual milk production than earlier versions of the program.

Milk2006 was designed solely as an index to be used when making quality comparisons between silage samples or hybrids. Milk per ton or milk per acre numbers should not be used to predict actual milk production on your farm. Milk per ton is more accurate at predicting cow performance since it includes quality factors that affect milk production. Milk per acre allows consideration of yield as well as quality factors.

Use other information.

Consider as much other information as possible from other independent sources before selecting hybrids. Look for agronomic as well as silage quality data.

2018 VIRGINIA CORN SILAGE PLOT INFORMATION
(Rates are on a per acre basis.)

Blackstone (Southern Piedmont Agricultural Research & Extension Center)

Planted: April 20, 2018 conventional tillage

Harvested: August 6-7, 2018

Pesticide: 2 qt Brawl ATZ April 23, 2018

Fertilizer: 1000 lb 10-10-10 preplant incorporated April 10, 2018; 80 lb N top-dressed using UAN May 23, 2018

Population: 27,455 ppa

Plot Size: 2 rows 25' x 30" 4 replications

Soil Type: Appling and Durham sandy loam

Cooperator: Ned Jones

Orange (Northern Piedmont Center)

Planted: May 8, 2018 no-till behind wheat

Harvested: August 24, 2018

Pesticide: 5 lb Force 3G® at planting; 1 pt 2, 4-D + 1 qt Roundup® + 3 qt Acuron™ April 23, 2018; 1.3 oz Primero® June 20, 2018

Fertilizer: 39-100-80 May 7, 2018; 17 gal 15-15-0-2S-.13B-.25Zn at planting; 100 lb N side-dressed June 13, 2018

Population: 32,010 ppa

Plot Size: 2 rows 25' x 30" 4 replications

Soil Type: Starr silt loam

Cooperators: Brad Lael, Steve Gulick

Shenandoah Valley (Timberville - Thanks to David Yutzy and Windcrest Dairy)

Planted: May 15, 2018 No-till into grazed and killed cereal cover

Harvested: Abandoned due to extremely poor stand, likely from slug damage

Cooperators: Doug Horn and David Yutzy

Washington County (Southwest Virginia Agricultural Research & Extension Center)

Planted: May 24, 2018 no-till

Harvested: September 14, 2018

Pesticide: 1 qt Atrazine + 2.5 qt Lexar® pre-plant; 5 lb Force 3G® at planting

Fertilizer: 150-40-80-20S-5Zn preplant; 17 gal 15-15-0-2S-.13B-.25Zn at planting; 75 lb N side-dressed June 21, 2018

Population: 30,515 ppa

Plot Size: 2 rows 35' x 30" 4 replications

Soil Type: Wyrick-Marbie silt loam

Cooperators: Phil Blevins

Table 1. List of Hybrids in the 2018 VA Tech Corn Silage Hybrid Test

Brand	Hybrid	ID	DTM ¹	Insecticidal Seed Treatment	Genetic Trait Package	OBS ²
Augusta	A5262	1098	112	Cruiser Maxx® 250	Agrisure 3000GT	2
Augusta	A5663	1141	113	Cruiser Maxx® 250	Agrisure 3000GT	1
Augusta	A1564	1123	114	Cruiser Maxx® 250	Agrisure 3000GT	1
Augusta	A5264	1140	114	Cruiser Maxx® 250	Agrisure 3000GT	1
Augusta	A1165	1134	115	Cruiser Maxx® 250	VT Double PRO	1
Augusta	A5465	8151	115	Cruiser Maxx® 250	Agrisure 3000GT	1
Augusta	A5065	1142	115	Cruiser Maxx® 250	Agrisure Viptera 3111	1
Augusta	A1367	1143	117	Cruiser Maxx® 250	Agrisure Viptera 3220 EZ Refuge	1
Augusta	A6867	1139	117	Cruiser Maxx® 250	Agrisure Viptera 3111	0
Augusta	A7668	1129	118	Cruiser Maxx® 250	Agrisure Viptera 3110	1
Augusta	A7768	8154	118	Cruiser Maxx® 250	Agrisure Viptera 3110	1
Augusta	A8868	1006	118	Cruiser Maxx® 250	VT Triple PRO	1
Caverndale Farms	CF 814 3000GT	9109	112	Avicta® Complete 500 + Vibrance®	Agrisure 3000GT	1
Caverndale Farms	CF 853 VIP 3110	9119	115	Cruiser Maxx® 250 + Vibrance®	Agrisure Viptera 3110	1
Caverndale Farms	CF 888 3000GT	9118	117	Cruiser Maxx® 250 + Vibrance®	Agrisure 3000GT	1
Channel	210-98STXRIB	5371	110	Poncho® 500/VOTiVO®	SmartStax RIB Complete	3
Channel	212-20STXRIB	5372	112	Poncho® 500/VOTiVO®	SmartStax RIB Complete	3
Channel	215-98STXRIB	5369	115	Poncho® 500/VOTiVO®	SmartStax RIB Complete	3
Channel	219-77STXRIB	5373	119	Poncho® 500/VOTiVO®	SmartStax RIB Complete	3
Dyna-Gro	D55VC45	4427	115	Poncho® 250	VT Double PRO	1
Dyna-Gro	D58VC65	4100	118	Poncho® 250	VT Double PRO	1
KingFisher	KF 58C80	6203	108	Maxim Quattro + Vibrance®	conventional	0
KingFisher	KF 61C40	6201	111	Maxim Quattro + Vibrance®	conventional	0
KingFisher	KF 63C10	6202	113	Maxim Quattro + Vibrance®	conventional	0
Masters Choice	MCT6363	4811	113	Cruiser Maxx® 250	Agrisure 3000GT	3
Masters Choice	MCT6552	4815	115	Cruiser Maxx® 250	Agrisure Viptera 3110	3
Masters Choice	MCT6653	4814	116	Cruiser Maxx® 250	Agrisure 3000GT	3
Masters Choice	MCT6733	4812	117	Cruiser Maxx® 250	Agrisure 3000GT	3
Mid-Atlantic	MA5153	4708	115	Cruiser Maxx® 250	conventional	3
Mid-Atlantic	MA5166	4945	116	Cruiser Maxx® 250	Agrisure Viptera 3110	3
Mid-Atlantic	MA5161	4948	116	Cruiser Maxx® 250	Agrisure Viptera 3110	3

Table 1. List of Hybrids in the 2018 VA Tech Corn Silage Hybrid Test

Brand	Hybrid	ID	DTM ¹	Insecticidal Seed Treatment	Genetic Trait Package	OBS ²
Mycogen	TMF 14L46	8274	114	Cruiser Maxx® 1250	SmartStax	2
Mycogen	TMF 15H86	8276	114	Cruiser Maxx® 1250	Powercore	2
Mycogen	TMF 16S87	8275	116	Cruiser Maxx® 1250	SmartStax	2
Mycogen	TMF 17W95	8273	117	Cruiser Maxx® 1250	Powercore	2
NK	NK1573110	1212	115	Avicta® Complete 500 + Vibrance®	Agrisure Viptera 3110	2
NK	NK1808-3111	1210	118	Avicta® Complete 500 + Vibrance®	Agrisure Viptera 3111	2
Pioneer	0843AM	5095	108	Poncho® 1250/VOTiVO®	AcreMax	3
Pioneer	1555CHR	5097	115	Poncho® 1250/VOTiVO®	Intrasect TRIssect	3
Pioneer	2088AMX	5076	120	Poncho® 1250/VOTiVO®	AcreMax Xtra	3
Progeny Ag Products	PGY 8116SS	10110	116	Poncho®500/VOTiVO® + EDC	SmartStax	3
Progeny Ag Products	PGY EXP1817	10113	117	Poncho®500/VOTiVO® + EDC	VT Double PRO	3
Progeny Ag Products	PGY 7118VT2P	10111	118	Poncho®500/VOTiVO® + EDC	VT Double PRO	3
Progeny Ag Products	PGY 6119VT2P	10106	119	Poncho®500/VOTiVO® + EDC	VT Double PRO	3
Seed Consultants	SCS 1098YHR™	5437	108	Cruiser Maxx® 250 + Vibrance®	Intrasect	3
Seed Consultants	SC 11AQ17™	5433	111	Cruiser Maxx® 250 + Vibrance®	Intrasect	3
Seed Consultants	SCS 1125YHR™	5434	112	Cruiser Maxx® 250 + Vibrance®	Intrasect	3
Seed Consultants	SCS 1136YHR™	5435	113	Cruiser Maxx® 250 + Vibrance®	Intrasect	3
Seed Consultants	SCS 1158YHR™	5439	115	Cruiser Maxx® 250 + Vibrance®	Intrasect	3
Seed Consultants	SCS 11HR63™	4638	116	Cruiser Maxx® 250 + Vibrance®	Herculex 1	3
Seed Consultants	SCS 1168YHR™	5440	116	Cruiser Maxx® 250 + Vibrance®	Intrasect	3
Seed Consultants	SCS 1187YHR™	5436	118	Cruiser Maxx® 250 + Vibrance®	Intrasect	3

¹Days to maturity (DTM) provided by company; differences in maturity rating methods may exist.

²Number of observations hybrid occurred (Obs); the greater the observations, the more reliable the data.

Shaded hybrids indicate hybrids entered in less than 3 locations. Hybrids are sorted by Brand then DTM.

The Handy Bt Trait Table

for U.S. Corn Production

Updated
15 March 2017

Posted at www.msuent.com

For questions, complaints, or corrections: Chris DiFonzo, Michigan State University, difonzo@msu.edu
Contributors: Pat Porter, Texas A&M University & Kelley Tilmon, The Ohio State University

Most corn hybrids planted in the U.S. contain one or more transgenic traits for weed or insect management. These traits can increase flexibility and profitability for producers, but sometimes cause confusion about their spectrum of control or refuge requirements. The Handy Bt Trait Table provides a helpful list of trait names (below) and details of trait packages (next page) to make it easier to read company seed guides, sales materials, and bag tags. Note that there are two versions of the table (north/Midwest vs. south/cotton belt) which differ only in refuge percentages.

Important clarifications or changes to the Trait Table for 2017

- ✓ An insect is listed in the CONTROL SPECTRUM column if seed providers claim protection or efficacy for a given Bt package; insect species which are 'suppressed' are no longer listed. Actual field-level performance of hybrids on lepidopteran and rootworm larvae may differ if there are local or regional insect populations which are less susceptible or resistant to Bt proteins.
- ✓ To address local or regional performance issues, a new column ('May be ineffective on') was added to highlight insect x Bt toxins with documented field-failures, confirmed resistance, or cross-resistance. An insect is listed in this column only if ALL of the Bt proteins which should control it in a product are 'ineffective' somewhere in the US or Canada. Ineffective ratings are based on published lab assays &/or field research from field corn, sweet corn, and cotton. University extension specialists or local educators can assist in determining if you are in an area where reduced effectiveness was reported. On a broader scale, this column is intended to alert growers and consultants to potential management problems, influence seed selection, and encourage field scouting.
- ✓ The refuge column was simplified to include only the % and an indication if the refuge is in the bag.

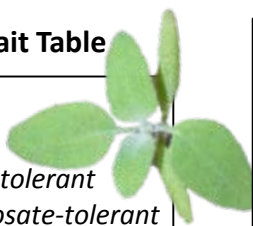
Field corn 'events' (transformations of one or more genes) and their Trade Names

Trade name for trait	Event	Protein(s) expressed	Insect Target or Herbicide Activity
Agrisure CB/LL	Bt11	Cry1Ab + PAT	corn borer + <i>glufosinate tolerance</i>
Agrisure Duracade	5307	eCry3.1Ab	rootworm
Agrisure GT	GA21	EPSPS	<i>glyphosate tolerance</i>
Agrisure RW	MIR604	mCry3A	rootworm
Agrisure Viptera	MIR162	Vip3A	broad lep control (but not corn borer)
Herculex 1 or CB	TC1507	Cry1Fa2 + PAT	corn borer + <i>glufosinate tolerance</i>
Herculex RW	DAS-59122-7	Cry34Ab1/Cry35Ab1 + PAT	rootworm + <i>glufosinate tolerance</i>
Roundup Ready 2	NK603	EPSPS	<i>glyphosate tolerance</i>
Yieldgard Corn Borer	MON810	Cry1Ab	corn borer
Yieldgard Rootworm	MON863	Cry3Bb1	rootworm
Yieldgard VT Pro	MON89034	Cry1A.105 + Cry2Ab2	broader lep control
Yieldgard VT Rootworm RR	MON88017	Cry3Bb1 + EPSPS	rootworm + <i>glyphosate tolerance</i>

Abbreviations used in the Trait Table

Herbicide activity

GT *glyphosate tolerant*
LL Liberty Link - *glufosinate-tolerant*
RR2 Roundup Ready 2, *glyphosate-tolerant*



Insect targets

BCW black cutworm SB stalk borer
CEW corn earworm SCB sugarcane borer
ECB European corn borer SWCB southwestern corn borer
FAW fall armyworm TAW true armyworm
RW corn rootworm WBC western bean cutworm



Bt corn trait packages with their Bt proteins, spectrum of control, & % refuge

Updated 15 March 2017

TRAIT FAMILY		CONTROL SPECTRUM Marketed for control of:		May be locally or regionally ineffective on:	Herbicide tolerance	Refuge %
Specific Product	Bt protein(s)	above-ground-----in soil				
AGRISURE						
Agrisure 3010, 3010A	Cry1Ab	ECB SCB SWCB	---		GT LL	20%
Agrisure 3000GT, 3011A	Cry1Ab mCry3A	ECB SCB SWCB	RW	RW	GT LL	20%
Agrisure Viptera 3110	Cry1Ab Vip3A	BCW CEW ECB FAW SB SCB SWCB TAW WBC	---		GT LL	20%
Agrisure Viptera 3111	Cry1Ab Vip3A mCry3A	BCW CEW ECB FAW SB SCB SWCB TAW WBC	RW	RW	GT LL	20%
Agrisure 3120 E-Z Refuge	Cry1Ab Cry1F	BCW ECB FAW SB SCB SWCB WBC	---	FAW, WBC	REFER TO BAG TAG	5% in bag
Agrisure 3122 E-Z Refuge	Cry1Ab Cry1F mCry3A Cry34/35Ab1	BCW ECB FAW SB SCB SWCB WBC	RW	FAW, WBC RW	for specific letter code:	5% in bag
Agrisure Viptera 3220 E-Z Refuge	Cry1Ab Cry1F Vip3A	BCW CEW ECB FAW SB SCB SWCB TAW WBC	---		EZ0 hybrids = GT only	5% in bag
Agrisure Duracade 5122 E-Z Refuge	Cry1Ab Cry1F mCry3A eCry3.1Ab	BCW ECB FAW SB SWCB WBC	RW	FAW, WBC RW		5% in bag
Agrisure Duracade 5222 E-Z Refuge	Cry1Ab Cry1F Vip3A mCry3A eCry3.1Ab	BCW CEW ECB FAW SB SCB SWCB TAW WBC	RW	RW	EZ1 hybrids = GT LL	5% in bag
HERCULEX						
Herculex 1 (HX1)	Cry1F	BCW ECB FAW SB SCB SWCB WBC	---	FAW, SWCB, WBC	LL	20%
Herculex RW (HXRW)	Cry34/35Ab1	---	RW	RW	RR2	20%
Herculex XTRA (HXX)	Cry1F Cry34/35Ab1	BCW ECB FAW SB SCB SWCB WBC	RW	FAW, SWCB, WBC RW	(most)	20%
OPTIMUM						
Intrasect (YHR)	Cry1Ab Cry1F	BCW ECB FAW SB SCB SWCB WBC	---	FAW, WBC	LL RR2	5%
AcreMax (AM)	Cry1Ab Cry1F	BCW ECB FAW SB SCB SWCB WBC	---	FAW, WBC	LL RR2	5% in bag
Leptra (VYHR) ^a AcreMax Leptra (AML) ^b	Cry1Ab Cry1F Vip3A	BCW CEW ECB FAW SB SCB SWCB TAW WBC	---		LL RR2	^a 5% ½ mile ^b 5% in bag
AcreMax RW (AMRW)	Cry34/35Ab1	---	RW	RW	LL RR2	10% in bag
AcreMax1 (AM1)	Cry1F Cry34/35Ab1	BCW ECB FAW SB SCB SWCB WBC	RW	FAW, SWCB, WBC RW	LL RR2	10% in bag 20% ECB
TRIssect (CHR)	Cry1F mCry3A	BCW ECB FAW SB SCB SWCB WBC	RW	FAW, SWCB, WBC RW	LL RR2	20%
Intrasect TRIssect (CYHR) ^a AcreMax TRIssect (AMT) ^b	Cry1Ab Cry1F mCry3A	BCW ECB FAW SB SCB SWCB WBC	RW	FAW, WBC RW	LL RR2	^a 20% ^b 10% in bag
Intrasect Xtra (YXR) ^a AcreMax Xtra (AMX) ^b	Cry1Ab Cry1F Cry34/35Ab1	BCW ECB FAW SB SCB SWCB WBC	RW	FAW, WBC RW	LL RR2	^a 20% ^b 10% in bag
Intrasect Xtreme (CYXR) ^a AcreMax Xtreme (AMXT) ^b	Cry1Ab Cry1F mCry3A Cry34/35Ab1	BCW ECB FAW SB SCB SWCB WBC	RW	FAW, WBC RW	LL RR2	^a 5% ^b 5% in bag
YIELDGARD or GENUITY						
YieldGard CB (YGCB)	Cry1Ab	ECB SCB SWCB	---	SCB	RR2	20%
YieldGard VT Rootworm	Cry3Bb1	---	RW	RW	RR2	20%
YieldGard VT Triple	Cry1Ab Cry3Bb1	ECB SCB SWCB	RW	SCB RW	RR2	20%
Genuity VT Double PRO ^a or RIB complete ^b	Cry1A.105 Cry2Ab2	CEW ECB FAW SB SCB SWCB	---	CEW	RR2	^a 5% ^b 5% in bag
Genuity VT Triple PRO ^a or RIB complete ^b	Cry1A.105 Cry2Ab2 Cry3Bb1	CEW ECB FAW SB SCB SWCB	RW	CEW RW	RR2	^a 20% ^b 10% in bag
Genuity SmartStax ^a or RIB Complete ^b	Cry1A.105 Cry2Ab2 Cry1F Cry3Bb1 Cry34/35Ab1	BCW CEW ECB FAW SB SCB SWCB WBC	RW	CEW, WBC RW	LL RR2	^a 5% ^b 5% in bag
OTHER						
Powercore ^a Powercore Refuge Adv. ^b	Cry1A.105 Cry2Ab2 Cry1F	BCW CEW ECB FAW SB SCB SWCB WBC	---	CEW, WBC	LL RR2	^a 5% ^b 5% in bag
Smartstax ^a Smartstax Refuge Adv. ^b	Cry1A.105 Cry2Ab2 Cry1F Cry3Bb1 Cry34/35Ab1	BCW CEW ECB FAW SB SCB 8SWCB WBC	RW	CEW, WBC RW	LL RR2	^a 5% ^b 5% in bag
Qrome	Cry1Ab Cry1F mCry3A Cry34/35Ab1	BCW ECB FAW SB SCB SWCB WBC	RW	FAW, WBC RW	LL RR2	5% in bag

Table 2. Multi-year, Multi-site Relative Ton per Acre (Yield)

Brand	Hybrid	DTM per Co. ¹	Shenandoah Valley		Northern Piedmont		Southern Piedmont		Southwest / Mountain		Multi-Site Average	Number of Obs. ²
			2018 ⁴	2017	2018	2017	2018	2017	2018	2017		
-----Relative Ton per Acre ³ -----												
Augusta	A1165	115	154 *	---	---	---	---	98	108 *	120	3	
Caverndale Farms	CF 853 VIP 3110	115	---	---	---	---	---	117 *	---	117	1	
Caverndale Farms	CF 888 3000GT	117	---	---	---	---	---	117 *	---	117	1	
Mycogen	TMF 15H86	114	---	---	---	117 *	---	106	---	111	2	
Channel	219-77STXRIB	119	---	130 *	---	102	---	99	---	110	3	
Progeny Ag Products	PGY 6119VT2P	119	---	126 *	---	97	---	107	---	110	3	
Mycogen	TMF 14L46	114	---	---	---	104 *	---	115 *	---	109	2	
Seed Consultants	SCS 1187YHR™	118	---	119	---	101	---	108	---	109	3	
Pioneer	1555CHR	115	129	105	---	99	101	105	108 *	108	6	
Augusta	A1564	114	---	---	---	---	---	95	120 *	108	2	
Augusta	A7668	118	---	---	---	---	---	105	110 *	108	2	
Seed Consultants	SCS 1168YHR™	116	121	116	95	108 *	99	105	107 *	107	7	
Augusta	A1367	117	---	---	---	---	---	106	---	106	1	
Augusta	A8868	118	112	---	---	100	---	---	---	106	2	
Augusta	A7768	118	---	---	---	---	---	91	120 *	105	2	
Pioneer	2088AMX	120	113	112	97	96	102	106	110 *	105	7	
Seed Consultants	SCS 11HR63™	116	111	83	96	117 *	111 *	120 *	96	105	7	
Seed Consultants	SC 11AQ17™	111	114	96	102	104 *	99	100	120 *	105	7	
Mycogen	TMF 16S87	116	---	---	---	105 *	---	105	---	105	2	
Progeny Ag Products	PGY 7118VT2P	118	96	141 *	89	95	105 *	92	109 *	104	7	
Progeny Ag Products	PGY EXP1817	117	---	98	---	106 *	---	107	---	104	3	
Seed Consultants	SCS 1158YHR™	115	77	110	115 *	93	99	127 *	107 *	104	7	
Augusta	A5262	112	---	---	---	100	---	99	111 *	103	3	
NK	NK1808-3111	118	88	98	120 *	105 *	101	---	---	102	5	
Mid-Atlantic	MA5161	116	---	108	---	103 *	---	94	---	102	3	
Dyna-Gro	D55VC45	115	81	---	---	---	---	100	122 *	101	3	
Caverndale Farms	CF 814 3000GT	112	---	---	---	---	---	101	---	101	1	
Mycogen	TMF 17W95	117	---	---	---	103 *	---	96	---	100	2	

Table 2. Multi-year, Multi-site Relative Ton per Acre (Yield)

Brand	Hybrid	DTM per Co. ¹	Shenandoah Valley		Northern Piedmont		Southern Piedmont		Southwest / Mountain		Multi-Site Average	Number of Obs. ²
			2018 ⁴	2017	2018	2017	2018	2017	2018	2017		
-----Relative Ton per Acre ³ -----												
Channel	215-98STXRIB	115	89	119	100	94	98	88	99	98	98	7
Seed Consultants	SCS 1136YHR™	113	109	106	90	96	104 *	101	75	97	97	7
Progeny Ag Products	PGY 8116SS	116	---	100	---	101	---	91	---	97	97	3
Seed Consultants	SCS 1125YHR™	112	115	82	94	100	108 *	85	95	97	97	7
Augusta	A5465	115	---	---	---	---	---	101	93	97	97	2
Augusta	A5065	115	---	97	---	---	---	---	---	97	97	1
Mid-Atlantic	MA5166	116	102	93	100	92	95	100	97	97	97	7
Masters Choice	MCT6653	116	74	87	91	111 *	96	107	109 *	97	97	7
Augusta	A5264	114	---	---	---	---	---	96	---	96	96	1
Seed Consultants	SCS 1098YHR™	108	79	110	97	94	97	98	97	96	96	7
NK	NK1573110	115	---	85	---	107 *	---	---	---	96	96	2
Channel	210-98STXRIB	110	---	91	---	99	---	97	---	96	96	3
Mid-Atlantic	MA5153	115	---	97	---	99	---	90	---	96	96	3
Augusta	A5663	113	---	---	---	---	---	94	---	94	94	1
Pioneer	0843AM	108	---	84	107 *	90	104 *	89	86	93	93	6
Masters Choice	MCT6733	117	67	91	91	97	102	103	99	93	93	7
KingFisher	KF 63C10	113	91	---	---	---	---	---	---	91	91	1
Masters Choice	MCT6552	115	---	91	---	92	---	88	---	90	90	3
Channel	212-20STXRIB	112	---	62	---	83	---	108	---	84	84	3
Dyna-Gro	D58VC65	118	---	---	---	---	---	81	---	81	81	1
Masters Choice	MCT6363	113	35	68	84	95	92	79	84	77	77	7
KingFisher	KF 61C40	111	60	---	---	---	---	---	---	60	60	1

¹ Days to maturity provided by company; differences in maturity rating methods may exist between companies.

² Hybrids tested over more site/year combinations provide a better estimate of hybrid performance than those tested only in a single site/year location.

³ Relative Ton per Acre (yield) calculated by dividing Ton per Acre for each hybrid at each site/year by the average Ton per Acre for that site/year.

⁴ Shenandoah Valley was not harvested in 2018 due to very poor stand post-planting, most likely caused by slugs.

Numbers over 100 indicate above-average yield, 100 indicates average yield, numbers under 100 indicate below-average yield.

* Indicates numbers similar to the highest value in that column (i.e. within one LSD of the top performer.)

Shading indicates hybrids that were in the highest yielding group in at least three site years.

Table 3. Multi-year, Multi-site Relative Milk per Ton (Quality)

Brand	Hybrid	DTM per Co. ¹	Shenandoah Valley		Northern Piedmont		Southern Piedmont		Southwest / Mountain		Multi-Site Average	Number of Obs. ²
			2018 ⁴	2017	2018	2017	2018	2017	2018	2017		
-----Relative Milk per Ton ³ -----												
Mycogen	TMF 16S87	116	---	---	---	108 *	---	108 *	---	108	2	
Seed Consultants	SCS 1136YHR™	113	107 *	100 *	104 *	106 *	104	103	106 *	104	7	
Augusta	A7768	118	---	---	---	---	---	107 *	101	104	2	
Augusta	A8868	118	103	---	---	104 *	---	---	---	104	2	
Masters Choice	MCT6363	113	109 *	101 *	105 *	104 *	97	103	105 *	104	7	
Augusta	A5663	113	---	---	---	---	---	103 *	---	103	1	
Caverndale Farms	CF 814 3000GT	112	---	---	---	---	---	103 *	---	103	1	
Augusta	A5065	115	---	103 *	---	---	---	---	---	103	1	
Seed Consultants	SCS 1125YHR™	112	102	106 *	106 *	100 *	98	106 *	102 *	103	7	
Channel	215-98STXRIB	115	105 *	103 *	101 *	103 *	104	101	102 *	103	7	
Augusta	A5465	115	---	---	---	---	---	103 *	101 *	102	2	
Masters Choice	MCT6552	115	---	103 *	---	105 *	---	98	---	102	3	
Augusta	A7668	118	---	---	---	---	---	105 *	99	102	2	
Augusta	A1165	115	104 *	---	---	---	---	100	103 *	102	3	
Caverndale Farms	CF 853 VIP 3110	115	---	---	---	---	---	102	---	102	1	
Pioneer	2088AMX	120	103	100 *	101	102 *	106	100	101	102	7	
Mid-Atlantic	MA5161	116	---	103 *	---	96	---	106 *	---	102	3	
Mid-Atlantic	MA5153	115	---	102 *	---	101 *	---	100	---	101	3	
Augusta	A1367	117	---	---	---	---	---	101	---	101	1	
Seed Consultants	SCS 1187YHR™	118	---	101 *	---	102 *	---	101	---	101	3	
Caverndale Farms	CF 888 3000GT	117	---	---	---	---	---	101	---	101	1	
Seed Consultants	SC 11AQ17™	111	102	98	102 *	101 *	96	105 *	101 *	101	7	
Mid-Atlantic	MA5166	116	98	104 *	94	104 *	103	100	101	101	7	
Progeny Ag Products	PGY 6119VT2P	119	---	97	---	104 *	---	101	---	101	3	
Seed Consultants	SCS 1168YHR™	116	99	95	98	98	105	103	103 *	100	7	
Progeny Ag Products	PGY 8116SS	116	---	98	---	102 *	---	101	---	100	3	
Pioneer	1555CHR	115	102	98	---	102 *	101	95	101	100	6	
Channel	210-98STXRIB	110	---	101 *	---	97	---	102	---	100	3	
NK	NK1808-3111	118	99	98	103 *	101 *	97	---	---	100	5	

Table 3. Multi-year, Multi-site Relative Milk per Ton (Quality)

Brand	Hybrid	DTM per Co. ¹	Shenandoah Valley		Northern Piedmont		Southern Piedmont		Southwest / Mountain		Multi-Site Average	Number of Obs. ²
			2018 ⁴	2017	2018	2017	2018	2017	2018	2017		
-----Relative Milk per Ton ³ -----												
Seed Consultants	SCS 1158YHR™	115	102	103 *	100	100 *	101	94	98	100	7	
Masters Choice	MCT6733	117	103	102 *	96	100	98	101	97	99	7	
Progeny Ag Products	PGY 7118VT2P	118	98	101 *	100	97	98	99	100	99	7	
NK	NK1573110	115	---	101 *	---	96	---	---	---	99	2	
Mycogen	TMF 14L46	114	---	---	---	101 *	---	96	---	99	2	
Progeny Ag Products	PGY EXP1817	117	---	99	---	99	---	97	---	99	3	
Channel	219-77STXRIB	119	---	94	---	104 *	---	97	---	98	3	
Seed Consultants	SCS 1098YHR™	108	94	100 *	100	99	95	98	100	98	7	
Seed Consultants	SCS 11HR63™	116	102	97	99	96	102	91	99	98	7	
Masters Choice	MCT6653	116	91	101 *	101	95	103	97	96	98	7	
Mycogen	TMF 17W95	117	---	---	---	96	---	99	---	98	2	
Augusta	A5264	114	---	---	---	---	---	97	---	97	1	
Pioneer	0843AM	108	---	94	98	100 *	95	96	100	97	6	
Augusta	A5262	112	---	---	---	92	---	102	97	97	3	
Augusta	A1564	114	---	---	---	---	---	98	95	96	2	
Dyna-Gro	D55VC45	115	98	---	---	---	---	94	95	96	3	
Dyna-Gro	D58VC65	118	---	---	---	---	---	95	---	95	1	
Channel	212-20STXRIB	112	---	100 *	---	90	---	91	---	94	3	
KingFisher	KF 63C10	113	93	---	---	---	---	---	---	93	1	
Mycogen	TMF 15H86	114	---	---	---	88	---	97	---	92	2	
KingFisher	KF 61C40	111	86	---	---	---	---	---	---	86	1	

¹ Days to maturity provided by company; differences in maturity rating methods may exist between companies.

² Hybrids tested over more site/year combinations provide a better estimate of hybrid performance than those tested only in a single site/year location.

³ Relative Milk per Ton (quality) calculated by dividing Milk per Ton for each hybrid at each site/year by the average Milk per Ton for that site/year.

⁴ Shenandoah Valley was not harvested in 2018 due to very poor stand post-planting, most likely caused by slugs.

Numbers over 100 indicate above-average yield, 100 indicates average yield, numbers under 100 indicate below-average yield.

* Indicates numbers similar to the highest value in that column (i.e. within one LSD of the top performer.)

Shading indicates hybrids that were in the highest yielding group in at least three site years.

Table 4. Multi-year, Multi-site Relative Milk per Acre (Yield X Quality)

Brand	Hybrid	DTM per Co. ¹	Shenandoah Valley		Northern Piedmont		Southern Piedmont		Southwest / Mountain		Multi-Site Average	Number of Obs. ²
			2018 ⁴	2017	2018	2017	2018	2017	2018	2017		
-----Relative Milk per Acre ³ -----												
Augusta	A1165	115	160 *	---	---	---	---	97	110 *	123	3	
Caverndale Farms	CF 853 VIP 3110	115	---	---	---	---	---	119 *	---	119	1	
Caverndale Farms	CF 888 3000GT	117	---	---	---	---	---	117 *	---	117	1	
Mycogen	TMF 16S87	116	---	---	---	114 *	---	113 *	---	114	2	
Seed Consultants	SCS 1187YHR™	118	---	121 *	---	103 *	---	109 *	---	111	3	
Augusta	A7668	118	---	---	---	---	---	111 *	110 *	110	2	
Progeny Ag Products	PGY 6119VT2P	119	---	122 *	---	101 *	---	108 *	---	110	3	
Augusta	A8868	118	115	---	---	104 *	---	---	---	110	2	
Augusta	A7768	118	---	---	---	---	---	97	121 *	109	2	
Channel	219-77STXRIB	119	---	122 *	---	106 *	---	96	---	108	3	
Pioneer	1555CHR	115	132	102	---	101 *	102	101	109 *	108	6	
Augusta	A1367	117	---	---	---	---	---	108 *	---	108	1	
Mycogen	TMF 14L46	114	---	---	---	106 *	---	110 *	---	108	2	
Seed Consultants	SCS 1168YHR™	116	120	110	93	106 *	104	108 *	110 *	107	7	
Pioneer	2088AMX	120	116	113	97	99	108 *	106 *	111 *	107	7	
Seed Consultants	SC 11AQ17™	111	117	95	104	105 *	95	105 *	121 *	106	7	
Mid-Atlantic	MA5161	116	---	112	---	99 *	---	100	---	104	3	
Caverndale Farms	CF 814 3000GT	112	---	---	---	---	---	103	---	103	1	
Augusta	A1564	114	---	---	---	---	---	93	114 *	103	2	
Seed Consultants	SCS 1158YHR™	115	77	114	115 *	93	99	120 *	104 *	103	7	
Seed Consultants	SCS 11HR63™	116	113	80	95	113 *	113 *	110 *	96	103	7	
Mycogen	TMF 15H86	114	---	---	---	103 *	---	103	---	103	2	
Progeny Ag Products	PGY 7118VT2P	118	94	141 *	90	92	103	91	109 *	103	7	
NK	NK1808-3111	118	88	96	124 *	107 *	98	---	---	102	5	
Progeny Ag Products	PGY EXP1817	117	---	97	---	105 *	---	105 *	---	102	3	
Seed Consultants	SCS 1136YHR™	113	116	107	93	102 *	108 *	104	79	101	7	
Channel	215-98STXRIB	115	93	118	102	96	103	90	101 *	100	7	
Seed Consultants	SCS 1125YHR™	112	117	91	100	100 *	106 *	90	98	100	7	
Augusta	A5262	112	---	---	---	92	---	101	108 *	100	3	

Table 4. Multi-year, Multi-site Relative Milk per Acre (Yield X Quality)

Brand	Hybrid	DTM per Co. ¹	Shenandoah Valley		Northern Piedmont		Southern Piedmont		Southwest / Mountain		Multi-Site Average	Number of Obs. ²
			2018 ⁴	2017	2018	2017	2018	2017	2018	2017		
-----Relative Milk per Acre ³ -----												
Augusta	A5065	115	---	100	---	---	---	---	---	---	100	1
Augusta	A5465	115	---	---	---	---	---	105 *	94	---	99	2
Progeny Ag Products	PGY 8116SS	116	---	99	---	103 *	---	91	---	---	98	3
Mid-Atlantic	MA5166	116	100	97	94	96	98	100	98	---	98	7
Mycogen	TMF 17W95	117	---	---	---	100 *	---	95	---	---	97	2
Mid-Atlantic	MA5153	115	---	100	---	100 *	---	91	---	---	97	3
Augusta	A5663	113	---	---	---	---	---	97	---	---	97	1
Dyna-Gro	D55VC45	115	79	---	---	---	---	94	116 *	---	96	3
Channel	210-98STXRIB	110	---	93	---	96	---	100	---	---	96	3
NK	NK1573110	115	---	86	---	104 *	---	---	---	---	95	2
Masters Choice	MCT6653	116	69	87	92	105 *	99	104 *	105 *	---	95	7
Augusta	A5264	114	---	---	---	---	---	94	---	---	94	1
Seed Consultants	SCS 1098YHR™	108	75	108	97	93	92	96	97	---	94	7
Masters Choice	MCT6552	115	---	95	---	97	---	87	---	---	93	3
Masters Choice	MCT6733	117	69	94	87	97	100	104	97	---	92	7
Pioneer	0843AM	108	---	79	105	90	99	85	87	---	91	6
KingFisher	KF 63C10	113	84	---	---	---	---	---	---	---	84	1
Channel	212-20STXRIB	112	---	66	---	75	---	99	---	---	80	3
Masters Choice	MCT6363	113	39	69	89	99	89	81	88	---	79	7
Dyna-Gro	D58VC65	118	---	---	---	---	---	77	---	---	77	1
KingFisher	KF 61C40	111	52	---	---	---	---	---	---	---	52	1

¹ Days to maturity provided by company; differences in maturity rating methods may exist between companies.

² Hybrids tested over more site/year combinations provide a better estimate of hybrid performance than those tested in a single site/year location.

³ Relative Milk per Acre (yield x quality) calculated by dividing Milk per Acre for each hybrid at each site/year by the average Milk per Acre for that site/year.

⁴ Shenandoah Valley was not harvested in 2018 due to very poor stand post-planting, most likely caused by slugs.

Numbers over 100 indicate above-average yield, 100 indicates average yield, numbers under 100 indicate below-average yield.

* Indicates numbers similar to the highest value in that column (i.e. within one LSD of the top performer.)

Shading indicates hybrids that were in the highest yielding group in at least three site years.

Table 5. 2018 Corn Silage Test Results at the Northern Piedmont Site

Brand	Hybrid	ID	DTM ¹	DM at Harvest	Yield at 35% DM		DM Yield	Crude Protein		ADF	NDF	NDF Digest.	NE _L	TDN	Milk2006	Milk2006					
			--Days--	%	ton/acre	*	ton/acre	-----%-----					Mcal/lb	%	lb milk/ton	lb milk/acre					
Progeny Ag Products	PGY 7118VT2P	10111	118	39.08	*	26.70	*	9.35	*	8.12	*	27.42	*	49.96	*	59.95	0.60	62.95	2635	24172	*
Channel	219-77STXRIB	5373	119	41.56	*	24.52	*	8.58	*	7.32	*	30.12	*	52.11	*	60.25	0.57	60.72	2451	20989	*
Progeny Ag Products	PGY 6119VT2P	10106	119	41.24	*	23.89	*	8.36	*	7.71	*	27.68	*	48.28	*	59.44	0.58	61.58	2525	20961	*
Seed Consultants	SCS 1187YHR™	5436	118	38.60	*	22.55	*	7.89	*	6.80	*	31.06	*	52.30	*	61.04	0.60	63.01	2627	20798	*
Channel	215-98STXRIB	5369	115	38.53	*	22.59	*	7.91	*	7.83	*	29.13	*	52.77	*	62.51	0.61	63.99	2687	20243	*
Seed Consultants	SCS 1158YHR™	5439	115	39.80	*	20.72	*	7.25	*	8.37	*	27.06	*	46.58	*	59.57	0.61	63.67	2696	19601	*
Pioneer	2088AMX	5076	120	40.92	*	21.20	*	7.42	*	7.43	*	28.15	*	49.69	*	61.61	0.59	62.79	2602	19410	*
Mid-Atlantic	MA5161	4948	116	39.47	*	20.46	*	7.16	*	7.87	*	27.86	*	49.63	*	62.37	0.61	63.89	2682	19250	*
Seed Consultants	SCS 1168YHR™	5440	116	39.35	*	21.90	*	7.66	*	6.56	*	32.10	*	55.26	*	61.81	0.57	61.25	2474	18950	*
Seed Consultants	SCS 1098YHR™	5437	108	38.74	*	20.81	*	7.28	*	7.25	*	30.01	*	51.50	*	59.92	0.60	62.73	2619	18595	*
Seed Consultants	SCS 1136YHR™	5435	113	39.97	*	20.05	*	7.02	*	7.91	*	27.65	*	50.06	*	61.44	0.60	62.94	2617	18340	*
Pioneer	1555CHR	5097	115	40.98	*	19.77	*	6.92	*	7.75	*	27.99	*	50.35	*	62.52	0.58	62.29	2551	17564	*
Mid-Atlantic	MA5153	4708	115	38.96	*	18.34	*	6.42	*	7.45	*	28.47	*	48.74	*	60.51	0.61	63.49	2672	17172	*
Augusta	AS065	1142	115	39.14	*	18.34	*	6.42	*	7.64	*	28.29	*	50.51	*	63.09	0.60	64.04	2685	17148	*
Progeny Ag Products	PGY 8116SS	10110	116	39.77	*	18.95	*	6.63	*	7.49	*	29.33	*	50.50	*	60.36	0.59	62.01	2555	17027	*
Progeny Ag Products	PGY EXP1817	10113	117	41.48	*	18.58	*	6.50	*	7.25	*	28.52	*	48.59	*	60.76	0.59	62.38	2579	16707	*
Mid-Atlantic	MA5166	4945	116	38.41	*	17.50	*	6.12	*	8.48	*	27.83	*	49.76	*	61.05	0.61	64.17	2718	16661	*
NK	NK1808-3111	1210	118	39.77	*	18.49	*	6.47	*	7.74	*	28.71	*	51.31	*	60.60	0.59	62.16	2564	16587	*
Seed Consultants	SC 11AQ17™	5433	111	41.36	*	18.12	*	6.34	*	7.90	*	27.51	*	47.65	*	59.58	0.59	62.06	2565	16290	*
Masters Choice	MCT6552	4815	115	39.06	*	17.27	*	6.04	*	7.82	*	29.30	*	49.63	*	63.33	0.61	64.13	2688	16276	*
Masters Choice	MCT6733	4812	117	38.80	*	17.27	*	6.05	*	8.17	*	28.31	*	49.98	*	60.94	0.60	63.37	2656	16108	*
Channel	210-98STXRIB	5371	110	41.15	*	17.25	*	6.04	*	7.82	*	28.09	*	49.20	*	61.18	0.60	63.11	2632	15963	*
Seed Consultants	SCS 1125YHR™	5434	112	39.15	*	15.49	*	5.42	*	7.76	*	27.29	*	46.15	*	60.32	0.62	64.62	2765	15645	*
Masters Choice	MCT6653	4814	116	39.53	*	16.37	*	5.73	*	7.69	*	27.91	*	50.79	*	62.02	0.60	63.20	2629	15010	*
NK	NK1573110	1212	115	38.89	*	16.01	*	5.60	*	8.04	*	27.97	*	48.60	*	59.22	0.60	62.99	2646	14794	*
Seed Consultants	SCS 11HR63™	4638	116	40.60	*	15.69	*	5.49	*	7.62	*	28.57	*	50.55	*	60.38	0.58	61.68	2527	13743	*
Pioneer	0843AM	5095	108	41.37	*	15.84	*	5.54	*	7.47	*	29.93	*	50.46	*	60.09	0.57	60.69	2451	13578	*
Masters Choice	MCT6363	4811	113	40.06	*	12.85	*	4.50	*	7.70	*	27.45	*	49.03	*	60.87	0.60	63.24	2648	11916	*
Channel	212-20STXRIB	5372	112	39.35	*	11.75	*	4.11	*	7.87	*	28.65	*	49.91	*	60.61	0.59	62.65	2602	11361	*
Site Average				39.83		18.94		6.63		7.68		28.56		49.99		60.94	0.60	62.82	2612	17271	
LSD (0.10)				2.61		3.52		1.23		1.01		2.79		4.56		2.96	0.03	2.07	169	3904	
C.V.				4.88		13.87		13.87		8.91		6.61		6.19		3.29	3.04	2.23	4	15	

¹Days to maturity provided by company; differences in maturity rating methods may exist between companies.

* Indicates numbers not significantly different from the highest (or lowest for ADF and NDF) value in that column, i.e. within one LSD of the top performer.

Hybrids are listed in descending order of lb milk/acre.

Table 6. Two-Year Corn Silage Test Results (2017 & 2018) at the Northern Piedmont Site

Brand	Hybrid	DTM ¹	DM at Harvest	Yield at 35% DM	DM Yield	Crude Protein	ADF	NDF	NDF Digest.	NE _L	TDN	Milk2006	Milk2006
		--Days--	%	ton/acre	ton/acre	-----%-----				Mcal/lb	%	lb milk/ton	lb milk/acre
Seed Consultants	SCS 1158YHR™	115	37.52	20.52 *	7.18 *	7.35 *	29.22 *	50.19 *	61.27 *	0.62 *	64.59	2764	19906 *
NK	NK1808-3111	118	36.94	19.93 *	6.98 *	7.03 *	30.18 *	52.45 *	62.31 *	0.61	64.37	2733	19179 *
Progeny Ag Products	PGY 7118VT2P	118	36.38	20.50 *	7.18 *	6.71 *	30.77 *	53.45 *	61.72 *	0.62 *	64.57	2760	18555 *
Channel	215-98STXRIB	115	36.87	19.84 *	6.94 *	7.06 *	29.66 *	52.21 *	62.86 *	0.63 *	65.60 *	2831 *	18343 *
Pioneer	2088AMX	120	36.76	18.89 *	6.61 *	6.78 *	30.98 *	52.94 *	63.26 *	0.61	64.59	2739	18090 *
Seed Consultants	SCS 1168YHR™	116	36.48	19.35 *	6.77 *	6.17 *	33.22 *	56.17 *	62.62 *	0.60	63.11	2626	17604 *
Seed Consultants	SCS 1098YHR™	108	37.19	18.97 *	6.64 *	6.29 *	32.03 *	53.05 *	62.18 *	0.62 *	64.77	2772	17377 *
Seed Consultants	SC 11AQ17™	111	37.82 *	18.06 *	6.32 *	6.94 *	29.45 *	50.84 *	61.88 *	0.62 *	64.56	2753	17375 *
Seed Consultants	SCS 1136YHR™	113	35.87	17.72 *	6.20 *	7.26 *	30.09 *	52.44 *	63.64 *	0.62 *	65.39 *	2799 *	17176 *
Seed Consultants	SCS 1125YHR™	112	36.24	16.10 *	5.63 *	7.16 *	29.12 *	49.82 *	62.97 *	0.64 *	66.51 *	2898 *	16757 *
Mid-Atlantic	MA5166	116	36.56	17.63 *	6.17 *	6.81 *	31.43 *	53.85 *	60.80 *	0.61	63.51	2684	16574 *
Pioneer	0843AM	108	39.15 *	17.42 *	6.10 *	7.04 *	30.13 *	50.85 *	61.38 *	0.60	62.70	2608	15983 *
Masters Choice	MCT6733	117	37.08	16.78 *	5.87 *	7.27 *	30.60 *	52.97 *	61.89 *	0.61	63.64	2676	15752 *
Seed Consultants	SCS 11HR63™	116	37.66	16.51 *	5.78 *	6.66 *	31.30 *	53.53 *	61.82 *	0.61	63.86	2701	15727 *
Masters Choice	MCT6653	116	36.60	16.27 *	5.69 *	7.04 *	30.04 *	52.56 *	62.60 *	0.62 *	64.64	2752	15634 *
Masters Choice	MCT6363	113	35.98	14.06 *	4.92 *	7.26 *	28.89 *	50.95 *	62.15 *	0.63 *	65.55 *	2832 *	14041 *
	Site Average		36.94	18.03	6.31	6.93	30.44	52.39	62.21	0.62	64.50	2745	17130
	LSD (0.10)		1.37	2.52	0.88	0.76	2.14	2.79	1.42	0.02	1.39	109	2878
	C.V.		4.14	15.60	15.60	11.74	7.49	5.68	2.43	2.93	2.30	4	18

¹Days to maturity provided by company; differences in maturity rating methods may exist between companies.

* Indicates numbers not significantly different from the highest (or lowest for ADF and NDF) value in that column, i.e. within one LSD of the top performer.

Hybrids are listed in descending order of lb milk/acre.

Table 7. Three-Year Corn Silage Test Results (2016, 2017 & 2018) at the Northern Piedmont Site

Brand	Hybrid	DTM ¹	DM at Harvest	Yield at 35% DM		DM Yield	Crude Protein	ADF	NDF	NDF Digest.	NE _L	TDN	Milk2006	Milk2006
		--Days--	%	ton/acre	ton/acre	ton/acre	-----%	Mcal/lb	%	lb milk/ton	lb milk/acre			
Seed Consultants	SCS 1136YHR™	113	34.59	17.86 *	6.25 *	7.59 *	28.76 *	49.95 *	63.08 *	0.59 *	59.40 *	2457 *	16217 *	
Pioneer	2088AMX	120	35.55	18.91 *	6.62 *	6.97	30.39	52.39	62.83 *	0.57	56.55	2277	15044 *	
Seed Consultants	SC 11AQ17™	111	36.59 *	18.70 *	6.54 *	7.04 *	29.00 *	50.06 *	61.29 *	0.58 *	57.36	2334	15014 *	
Seed Consultants	SCS 1125YHR™	112	34.82	17.75 *	6.21 *	7.38 *	28.48 *	48.74 *	62.01 *	0.59 *	57.77	2383 *	14645 *	
Pioneer	0843AM	108	36.73 *	17.34 *	6.07 *	7.43 *	29.23 *	49.50 *	60.92	0.55	54.05	2118	13002	
Seed Consultants	SCS 11HR63™	116	36.37 *	18.09 *	6.33 *	6.76	30.68	52.63	61.55	0.54	53.10	2075	12747	
Site Average			35.78	18.11	6.34	7.19	29.42	50.54	61.95	0.57	56.37	2274	14445	
LSD (0.10)			1.06	2.00	0.70	0.57	1.57	2.18	1.28	0.02	1.37	97	2049	
C.V.			4.01	14.63	14.63	10.50	7.13	5.76	2.74	3.51	3.25	6	19	

¹Days to maturity provided by company; differences in maturity rating methods may exist between companies.

* Indicates numbers not significantly different from the highest (or lowest for ADF and NDF) value in that column, i.e. within one LSD of the top performer.

Hybrids are listed in descending order of lb milk/acre.

Table 8. 2018 Corn Silage Test Results at the Southern Piedmont Site

Brand	Hybrid	DTM ¹	DM at Harvest	Yield at 35% DM		DM Yield	Crude Protein	ADF	NDF	NDF Digest.	NE _L	TDN	Milk2006	Milk2006							
		--Days--	%	ton/acre	ton/acre	ton/acre	%	Mcal/lb	%	lb milk/ton	lb milk/acre										
Mycogen	TMF 16S87	116	32.81	20.74	*	7.26	*	7.20	*	32.58	52.50	60.49	*	0.64	*	66.73	*	2917	*	21274	*
Seed Consultants	SCS 11HR63™	116	40.70	23.12	*	8.09	*	7.06	*	31.30	50.74	59.41	*	0.59	*	62.65	*	2600	*	21087	*
NK	NK1808-3111	118	37.56	20.68	*	7.24	*	6.85	*	32.05	53.10	60.30	*	0.61	*	64.36	*	2729	*	19853	*
Seed Consultants	SCS 1168YHR™	116	37.52	21.41	*	7.49	*	6.73	*	33.07	55.15	60.53	*	0.60	*	63.51	*	2654	*	19811	*
Channel	219-77STXRIB	119	36.05	20.21	*	7.07	*	7.46	*	32.67	52.36	60.14	*	0.62	*	65.28	*	2804	*	19728	*
Mycogen	TMF 14L46	114	35.35	20.61	*	7.21	*	6.50	*	34.27	55.47	59.39	*	0.61	*	64.30	*	2735	*	19706	*
Masters Choice	MCT6653	116	39.43	21.93	*	7.68	*	6.95	*	31.98	53.19	58.67	*	0.59	*	61.98	*	2556	*	19606	*
Progeny Ag Products	PGY EXP1817	117	40.05	20.93	*	7.33	*	6.99	*	30.45	49.42	59.11	*	0.61	*	63.60	*	2681	*	19596	*
Seed Consultants	SC 11AQ17™	111	38.81	20.62	*	7.22	*	6.97	*	30.50	51.13	59.38	*	0.61	*	64.05	*	2714	*	19540	*
Augusta	A8868	118	35.34	19.78	*	6.92	*	7.29	*	33.04	53.78	59.61	*	0.63	*	65.19	*	2803	*	19413	*
NK	NK1573110	115	38.52	21.19	*	7.42	*	6.92	*	33.84	54.77	59.94	*	0.59	*	62.60	*	2588	*	19381	*
Progeny Ag Products	PGY 8116SS	116	38.63	20.04	*	7.01	*	7.10	*	31.23	51.12	59.23	*	0.62	*	64.33	*	2739	*	19256	*
Seed Consultants	SCS 1187YHR™	118	38.70	19.98	*	6.99	*	6.76	*	31.95	51.52	61.27	*	0.62	*	64.83	*	2753	*	19236	*
Mycogen	TMF 15H86	114	47.36	23.11	*	8.09	*	6.35	*	32.45	51.18	58.94	*	0.56	*	59.63	*	2360	*	19141	*
Seed Consultants	SCS 1136YHR™	113	37.78	19.06	*	6.67	*	6.72	*	29.33	48.50	60.47	*	0.63	*	65.99	*	2859	*	18956	*
Pioneer	1555CHR	115	39.58	19.57	*	6.85	*	7.24	*	30.26	49.18	60.46	*	0.62	*	64.75	*	2759	*	18748	*
Progeny Ag Products	PGY 6119VT2P	119	37.34	19.19	*	6.72	*	7.26	*	30.69	49.61	58.05	*	0.63	*	64.90	*	2800	*	18735	*
Seed Consultants	SCS 1125YHR™	112	38.58	19.88	*	6.96	*	7.27	*	30.06	51.24	59.55	*	0.61	*	63.77	*	2689	*	18673	*
Mid-Atlantic	MA5153	115	38.50	19.60	*	6.86	*	7.18	*	30.84	49.14	58.52	*	0.62	*	64.17	*	2735	*	18649	*
Mycogen	TMF 17W95	117	36.46	20.43	*	7.15	*	6.22	*	35.59	57.69	58.65	*	0.59	*	62.44	*	2597	*	18556	*
Mid-Atlantic	MA5161	116	39.81	20.47	*	7.16	*	6.49	*	33.13	54.09	60.51	*	0.59	*	62.62	*	2583	*	18504	*
Pioneer	2088AMX	120	37.91	19.05	*	6.67	*	6.52	*	32.46	52.50	60.71	*	0.62	*	64.80	*	2757	*	18420	*
Masters Choice	MCT6363	113	38.19	18.76	*	6.57	*	6.99	*	30.93	49.55	59.95	*	0.62	*	65.16	*	2799	*	18341	*
Masters Choice	MCT6552	115	37.74	18.18	*	6.36	*	7.62	*	30.28	47.06	59.43	*	0.63	*	65.58	*	2837	*	18062	*
Masters Choice	MCT6733	117	38.04	19.11	*	6.69	*	7.41	*	31.64	52.66	59.32	*	0.61	*	63.66	*	2683	*	17971	*
Mid-Atlantic	MA5166	116	36.20	18.28	*	6.40	*	7.96	*	30.43	51.48	60.66	*	0.63	*	65.43	*	2809	*	17934	*
Channel	215-98STXRIB	115	38.56	18.53	*	6.49	*	6.97	*	30.68	50.16	59.07	*	0.62	*	64.63	*	2765	*	17864	*
Channel	210-98STXRIB	110	41.46	19.52	*	6.83	*	6.63	*	30.81	50.13	59.37	*	0.60	*	62.73	*	2607	*	17815	*
Seed Consultants	SCS 1098YHR™	108	38.30	18.54	*	6.49	*	7.21	*	31.51	52.54	58.74	*	0.61	*	63.42	*	2672	*	17307	*
Seed Consultants	SCS 1158YHR™	115	39.88	18.40	*	6.44	*	7.13	*	31.16	49.56	59.62	*	0.61	*	63.77	*	2689	*	17245	*
Progeny Ag Products	PGY 7118VT2P	118	38.52	18.77	*	6.57	*	6.16	*	33.37	54.45	59.01	*	0.60	*	62.90	*	2626	*	17214	*
Augusta	A5262	112	40.13	19.82	*	6.94	*	6.62	*	32.91	53.95	57.90	*	0.58	*	60.81	*	2473	*	17141	*
Pioneer	0843AM	108	39.76	17.87	*	6.26	*	7.53	*	30.49	49.08	60.61	*	0.61	*	63.98	*	2693	*	16804	*
Channel	212-20STXRIB	112	42.81	16.43	*	5.75	*	7.11	*	31.71	52.31	59.06	*	0.57	*	60.54	*	2435	*	13933	*
Site Average			38.60	19.82	6.94	6.98	31.75	51.77	59.59	0.61	63.80	2691	18632								
LSD (0.10)			3.35	2.83	0.99	0.82	2.55	5.05	1.53	0.04	2.96	232	2805								
C.V.			6.97	11.45	11.45	9.36	6.44	7.82	2.05	4.69	3.71	7	12								

¹Days to maturity provided by company; differences in maturity rating methods may exist between companies.

* Indicates numbers not significantly different from the highest (or lowest for ADF and NDF) value in that column, i.e. within one LSD of the top performer.

Hybrids are listed in descending order of lb milk/acre.

Table 9. Two-Year Corn Silage Test Results (2017 & 2018) at the Southern Piedmont Site

Brand	Hybrid	DTM ¹	DM at Harvest	Yield at 35% DM		DM Yield	Crude Protein	ADF	NDF	NDF Digest.	NE _L	TDN	Milk2006	Milk2006
		--Days--	%	ton/acre	ton/acre	-----%-----	Mcal/lb	%	lb milk/ton	lb milk/acre				
Seed Consultants	SCS 11HR63™	116	43.10 *	21.52 *	7.53 *	7.25 *	32.45	53.98 *	62.89 *	0.56	60.54	2408	18275 *	
Seed Consultants	SCS 1168YHR™	116	39.30	19.57	6.85	7.08	33.07	56.05	62.68 *	0.57 *	61.26 *	2470 *	17004 *	
Seed Consultants	SCS 1136YHR™	113	39.95	18.83	6.59	7.41 *	30.47 *	51.76 *	62.38 *	0.59 *	62.31 *	2560 *	16835	
Pioneer	2088AMX	120	39.40	18.64	6.52	6.79	33.04	54.65 *	62.32 *	0.58 *	61.90 *	2528 *	16546	
Seed Consultants	SCS 1125YHR™	112	40.99	19.62	6.87	7.41 *	32.35	54.81	61.34	0.56	60.29	2410	16542	
Masters Choice	MCT6653	116	40.94	19.56	6.85	7.03	32.75	55.59	61.53	0.56	60.17	2397	16539	
Seed Consultants	SC 11AQ17™	111	41.78	19.15	6.70	7.05	32.17 *	54.18 *	60.86	0.56	60.11	2402	16230	
NK	NK1808-3111	118	41.09	19.17	6.71	7.10	33.34	56.46	62.47 *	0.56	60.04	2380	16138	
Pioneer	1555CHR	115	41.96	18.69	6.54	7.08	31.72 *	53.59 *	62.96 *	0.57 *	60.93 *	2445 *	16002	
Channel	215-98STXRIB	115	40.36	18.05	6.32	7.16 *	31.76 *	52.82 *	60.76	0.58 *	61.52 *	2518 *	15933	
Progeny Ag Products	PGY 7118VT2P	118	40.35	18.79	6.58	6.32	35.00	57.15	60.74	0.57 *	60.32	2418	15866	
Masters Choice	MCT6733	117	41.64	18.72	6.55	7.35 *	32.84	55.50	61.63	0.56	60.29	2407	15813	
Mid-Atlantic	MA5166	116	39.29	17.66	6.18	7.63 *	32.24 *	54.50 *	62.03 *	0.58 *	61.85 *	2527 *	15682	
Seed Consultants	SCS 1158YHR™	115	42.26	18.02	6.31	7.10	32.13 *	53.15 *	61.82 *	0.57 *	60.72 *	2439 *	15375	
Masters Choice	MCT6363	113	40.63	17.57	6.15	6.85	33.04	54.27 *	61.32	0.57 *	60.84 *	2457 *	15228	
Pioneer	0843AM	108	44.61 *	18.32	6.41	7.54 *	31.32 *	52.56 *	61.46	0.55	59.39	2341	14941	
Seed Consultants	SCS 1098YHR™	108	43.27 *	17.97	6.29	6.93	33.02	55.83	62.00 *	0.56	59.90	2369	14932	
Site Average			41.23	18.81	6.59	7.12	32.51	54.52	61.83	0.57	60.73	2440	16111	
LSD (0.10)			2.26	1.51	0.53	0.49	1.85	2.95	1.33	0.02	1.64	129	1368	
C.V.			6.38	9.34	9.34	8.08	6.60	6.29	2.49	4.04	3.13	6	10	

¹Days to maturity provided by company; differences in maturity rating methods may exist between companies.

* Indicates numbers not significantly different from the highest (or lowest for ADF and NDF) value in that column, i.e. within one LSD of the top performer.

Hybrids are listed in descending order of lb milk/acre.

Table 10. Three-Year Corn Silage Test Results (2016, 2017 & 2018) at the Southern Piedmont Site

Brand	Hybrid	DTM ¹	DM at Harvest	Yield at 35% DM	DM Yield	Crude Protein	ADF	NDF	NDF Digest.	NE _L	TDN	Milk2006	Milk2006
		--Days--	%	ton/acre	ton/acre	-----%-----				Mcal/lb	%	lb milk/ton	lb milk/acre
Seed Consultants	SCS 11HR63™	116	37.76	20.24 *	7.08 *	7.14 *	33.27	55.15	63.99 *	0.51	50.59	1862	13761 *
Pioneer	2088AMX	120	35.45	17.67	6.18	6.78	32.92	54.70 *	63.69 *	0.54 *	54.27 *	2103 *	13438 *
Seed Consultants	SCS 1136YHR™	113	35.17	17.99	6.29	7.37 *	31.09 *	52.71 *	63.98 *	0.53 *	52.70	2017 *	12989 *
Seed Consultants	SC 11AQ17™	111	36.57	18.44	6.45	6.90	32.45 *	54.52 *	62.91 *	0.51	51.20	1913	12680 *
Pioneer	0843AM	108	39.52 *	18.19	6.37	7.49 *	31.50 *	52.80 *	63.24 *	0.52 *	52.16	1953	12436
Seed Consultants	SCS 1125YHR™	112	34.56	18.41	6.44	7.41 *	32.46 *	54.60 *	63.76 *	0.51	49.84	1837	12193
Site Average			36.51	18.49	6.47	7.18	32.28	54.08	63.59	0.52	51.80	1947	12916
LSD (0.10)			1.29	1.26	0.44	0.36	1.54	2.34	1.23	0.01	1.19	91	1089
C.V.			4.83	9.32	9.32	6.85	6.50	5.89	2.64	3.72	3.14	6	11

¹Days to maturity provided by company; differences in maturity rating methods may exist between companies.

* Indicates numbers not significantly different from the highest (or lowest for ADF and NDF) value in that column, i.e. within one LSD of the top performer. Hybrids are listed in descending order of lb milk/acre.

Table 11. 2018 Corn Silage Test Results at the Southwest Virginia Site

Brand	Hybrid	DTM ¹	DM at Harvest	Yield at 35% DM		DM Yield	Crude Protein	ADF	NDF	NDF Digest.	NE _L	TDN	Milk2006	Milk2006	
		--Days--	%	ton/acre	ton/acre							Mcal/lb	%	lb milk/ton	lb milk/acre
Seed Consultants	SCS 1158YHR™	115	38.92	* 44.97	* 15.74	* 7.97		27.13	* 48.43	* 59.06	0.60	62.78	2630	41471	*
Caverndale Farms	CF 853 VIP 3110	115	34.59	41.46	* 14.51	* 8.22		27.83	* 49.96	* 60.12	0.63	65.56	2846	41312	*
Caverndale Farms	CF 888 3000GT	117	36.85	41.28	* 14.45	* 8.19		26.65	* 48.70	* 61.03	0.63	65.41	2823	40605	*
Mycogen	TMF 16S87	116	33.67	37.04	12.96	8.58	*	26.98	* 48.64	* 63.60	0.66	* 68.18	* 3017	* 39120	*
Augusta	A7668	118	34.62	37.08	12.98	8.21		27.59	* 48.21	* 60.74	0.65	* 66.76	* 2934	* 38247	*
Seed Consultants	SCS 11HR63™	116	41.96	* 42.48	* 14.87	* 7.80		27.54	* 48.64	* 61.62	0.59	62.12	2549	37996	*
Mycogen	TMF 14L46	114	38.45	40.61	* 14.21	* 7.68		27.85	* 48.53	* 59.94	0.61	63.44	2675	37926	*
Seed Consultants	SCS 1187YHR™	118	35.56	38.25	13.39	8.34		28.08	* 50.14	61.07	0.63	65.36	2819	37761	*
Progeny Ag Products	PGY 6119VT2P	119	35.32	37.94	13.28	8.37		26.91	* 49.40	* 59.32	0.63	65.13	2820	37376	*
Seed Consultants	SCS 1168YHR™	116	34.54	37.12	12.99	8.17		28.17	* 50.78	62.64	0.63	66.20	2867	37315	*
Augusta	A1367	117	35.62	37.61	13.17	8.25		28.18	* 50.77	62.41	0.63	65.73	2834	37293	*
Pioneer	2088AMX	120	35.96	37.40	13.09	8.51	*	26.87	* 49.55	* 62.19	0.62	65.38	2807	36711	*
Seed Consultants	SC 11AQ17™	111	31.79	35.42	12.40	7.26		30.48	52.98	63.16	* 0.64	* 67.03	* 2925	* 36262	*
Progeny Ag Products	PGY EXP1817	117	38.12	37.95	13.28	8.07		26.44	* 47.32	* 58.60	0.61	63.84	2723	36191	*
Augusta	A5465	115	36.40	35.82	12.54	7.87		27.57	* 47.59	* 61.61	0.64	* 66.36	* 2891	* 36167	*
Masters Choice	MCT6653	116	37.31	37.94	13.28	8.06		28.30	* 50.83	61.73	0.61	64.13	2710	36023	*
Masters Choice	MCT6733	117	37.17	36.56	12.80	8.34		26.40	* 48.53	* 61.92	0.63	65.51	2820	35929	*
Seed Consultants	SCS 1136YHR™	113	34.82	35.66	12.48	7.93		28.06	* 50.48	65.04	* 0.63	66.69	* 2875	35838	*
Caverndale Farms	CF 814 3000GT	112	36.56	35.57	12.45	7.87		27.27	* 48.24	* 60.88	0.64	* 66.14	2882	* 35801	*
Mycogen	TMF 15H86	114	37.03	37.50	13.12	7.69		28.96	50.92	63.75	* 0.61	64.53	2717	35613	*
Augusta	A5262	112	34.98	35.05	12.27	7.63		28.57	50.39	59.78	0.63	65.48	2844	34935	*
Pioneer	1555CHR	115	38.44	37.26	13.04	8.36		26.95	* 49.27	* 61.04	0.60	63.48	2666	34861	*
Mid-Atlantic	MA5166	116	35.18	35.39	12.39	8.13		28.48	50.81	60.68	0.62	65.08	2800	34661	*
Mid-Atlantic	MA5161	116	33.99	33.18	11.61	8.74	*	27.24	* 48.08	* 61.47	0.65	* 67.21	* 2962	* 34503	*
Channel	210-98STXRIB	110	35.02	34.43	12.05	7.97		27.89	* 50.44	61.56	0.63	65.93	2857	34425	*
Channel	212-20STXRIB	112	39.97	* 38.31	13.41	8.12		27.16	* 49.30	* 60.03	0.59	61.79	2542	34089	*
Augusta	A1165	115	36.79	34.62	12.12	8.11		27.80	* 49.08	* 60.30	0.62	64.93	2791	33718	*
Augusta	A7768	118	31.88	32.11	11.24	8.42		27.93	* 50.38	61.96	0.65	* 67.62	* 2990	* 33599	*
Augusta	A5663	113	34.84	33.09	11.58	8.08		27.76	* 50.15	60.82	0.64	* 66.12	2882	* 33397	*
Channel	219-77STXRIB	119	36.81	35.08	12.28	8.10		28.01	* 50.30	61.31	0.61	64.14	2717	33360	*
Seed Consultants	SCS 1098YHR™	108	37.39	34.57	12.10	7.89		27.27	* 49.45	* 59.97	0.62	64.27	2743	33185	*
Mycogen	TMF 17W95	117	35.31	34.04	11.91	8.42		28.40	49.68	* 59.17	0.62	64.35	2759	32866	*
Dyna-Gro	D55VC45	115	38.12	35.41	12.40	8.04		27.72	* 50.04	60.00	0.60	62.96	2636	32684	*
Augusta	A5264	114	37.19	34.12	11.94	7.83		28.84	50.76	61.12	0.61	64.17	2720	32519	*
Augusta	A1564	114	38.59	33.61	11.76	7.98		27.85	* 49.07	* 62.41	0.61	64.44	2726	32044	*
Progeny Ag Products	PGY 7118VT2P	118	35.20	32.47	11.36	7.79		28.58	50.92	60.32	0.62	64.56	2763	31552	*
Progeny Ag Products	PGY 8116SS	116	34.28	32.03	11.21	8.14		28.25	* 50.89	60.11	0.63	65.18	2814	31549	*
Mid-Atlantic	MA5153	115	35.56	32.02	11.21	8.10		28.67	50.39	61.48	0.63	65.31	2807	31484	*
Seed Consultants	SCS 1125YHR™	112	33.41	30.23	10.58	8.96	*	26.69	* 49.01	* 62.70	0.65	* 67.26	* 2952	* 31173	*
Channel	215-98STXRIB	115	36.28	31.30	10.95	8.28		26.98	* 49.42	* 60.21	0.63	65.36	2829	31151	*

Table 11. 2018 Corn Silage Test Results at the Southwest Virginia Site

Brand	Hybrid	DTM ¹	DM at Harvest	Yield at 35% DM	DM Yield	Crude Protein	ADF	NDF	NDF Digest.	NE _L	TDN	Milk2006	Milk2006			
		--Days--	%	ton/acre	ton/acre					Mcal/lb	%	lb milk/ton	lb milk/acre			
Masters Choice	MCT6552	115	37.28	31.17	10.91	7.92	27.80	*	48.73	*	59.68	0.62	64.22	2742	29937	
Pioneer	0843AM	108	38.40	31.41	10.99	8.32	27.12	*	47.55	*	60.06	0.61	63.55	2680	29451	
Masters Choice	MCT6363	113	35.29	27.83	9.74	8.08	27.61	*	49.32	*	61.34	0.64	*	66.06	2871	27991
Dyna-Gro	D58VC65	118	38.65	28.59	10.01	8.04	26.54	*	46.68	*	56.89	0.61	62.74	2650	26552	
	Site Average		36.23	35.52	12.43	8.11	27.71		49.52		61.02	0.62	65.06	2793	34696	
	LSD (0.10)		3.04	5.32	1.86	0.50	1.97		3.02		2.33	0.02	1.86	139	5458	
	C.V.		6.58	11.78	11.78	4.88	5.57		4.78		2.99	2.62	2.24	4	12	

¹Days to maturity provided by company; differences in maturity rating methods may exist between companies.

* Indicates numbers not significantly different from the highest (or lowest for ADF and NDF) value in that column, i.e. within one LSD of the top performer.

Hybrids are listed in descending order of lb milk/acre.

Table 12. Two-Year Corn Silage Test Results (2017 & 2018) at the Southwest Virginia Site

Brand	Hybrid	DTM ¹	DM at Harvest	Yield at 35% DM		DM Yield	Crude Protein	ADF	NDF	NDF Digest.	NE _L	TDN	Milk2006	Milk2006
		--Days--	%	ton/acre	ton/acre						Mcal/lb	%	lb milk/ton	lb milk/acre
Seed Consultants	SC 11A1Q17™	111	33.16	35.22 *	12.33 *	7.63	28.50	50.45	63.45 *	0.65 *	67.82 *	2995 *	36805 *	
Seed Consultants	SCS 1158YHR™	115	37.37 *	37.99 *	13.30 *	8.12	26.50 *	47.75 *	60.17 *	0.63	64.84	2793	36764 *	
Augusta	A7668	118	34.57	34.95 *	12.23 *	8.30	26.99 *	48.44 *	61.29	0.65 *	67.12	2965 *	36353 *	
Seed Consultants	SCS 1168YHR™	116	34.09	34.57 *	12.10 *	8.35	27.45	50.10	63.76 *	0.65 *	67.57 *	2973 *	35876 *	
Augusta	A7768	118	32.41	33.45	11.71	8.77	27.01 *	49.51	62.84 *	0.66 *	68.06 *	3024 *	35464 *	
Pioneer	2088AMX	120	35.27	34.34 *	12.02 *	8.58 *	26.43 *	48.65	62.67	0.65 *	67.11	2950 *	35268 *	
Masters Choice	MCT6653	116	36.17 *	34.85 *	12.20 *	8.24	27.45	50.20	62.00	0.63	65.34	2813	34224 *	
Pioneer	1555CHR	115	36.59 *	33.95	11.88	8.64 *	26.32 *	47.78 *	61.77	0.64 *	66.15	2884	34089 *	
Augusta	A5262	112	35.43	33.60	11.76	8.22	27.21	48.74	60.58	0.64 *	66.16	2897	34052 *	
Dyna-Gro	D55VC45	115	37.88 *	35.44 *	12.40 *	8.43	27.03 *	49.49	61.71	0.61	64.35	2736	33928 *	
Augusta	A1165	115	36.09 *	33.19	11.62	8.54 *	26.58 *	47.23 *	60.84	0.65 *	66.61	2926	33830 *	
Seed Consultants	SCS 11HR63™	116	37.56 *	34.22 *	11.98 *	8.37	26.96 *	48.92	62.16	0.63	65.28	2809	33122 *	
Augusta	A1564	114	37.90 *	34.07 *	11.93 *	7.97	27.65	48.79	62.05	0.62	64.92	2776	33075 *	
Augusta	A5465	115	35.69	32.06	11.22	7.83	27.48	47.84 *	62.57	0.65 *	67.36 *	2969 *	33061 *	
Masters Choice	MCT6733	117	36.37 *	32.67	11.44	8.38	26.67 *	49.00	62.81 *	0.64 *	66.32	2885	32865 *	
Progeny Ag Products	PGY 7118VT2P	118	34.22	32.13	11.24	7.95	27.99	50.80	61.47	0.64 *	66.02	2875	32402	
Mid-Atlantic	MA5166	116	35.79	31.25	10.94	8.53 *	26.92 *	48.48 *	62.77 *	0.65 *	66.96	2939 *	32005	
Seed Consultants	SCS 1098YHR™	108	36.26 *	31.37	10.98	8.33	26.69 *	48.33 *	61.51	0.64 *	66.12	2882	31506	
Channel	215-98STXRIB	115	34.82	30.10	10.54	8.41	26.56 *	48.63	61.14	0.65 *	67.00	2958 *	31178	
Seed Consultants	SCS 1125YHR™	112	33.83	29.17	10.21	8.97 *	26.09 *	47.53 *	62.45	0.66 *	67.94 *	3017 *	30750	
Seed Consultants	SCS 1136YHR™	113	33.75	28.76	10.07	8.19	27.12 *	48.97	64.48 *	0.66 *	68.46 *	3036 *	30144	
Pioneer	0843AM	108	36.78 *	28.27	9.89	8.60 *	26.28 *	46.41 *	60.77	0.63	65.73	2857	28077	
Masters Choice	MCT6363	113	34.47	26.13	9.14	8.17	26.57 *	48.30 *	62.59	0.66 *	68.02 *	3024 *	27595	
Site Average			35.50	32.68	11.44	8.33	26.98	48.71	62.08	0.64	66.58	2912	33149	
LSD (0.10)			1.88	3.94	1.38	0.46	1.09	2.09	1.71	0.01	1.29	97	4077	
C.V.			5.91	13.51	13.51	6.12	4.49	4.77	3.07	2.54	2.15	4	14	

¹Days to maturity provided by company; differences in maturity rating methods may exist between companies.

* Indicates numbers not significantly different from the highest (or lowest for ADF and NDF) value in that column, i.e. within one LSD of the top performer. Hybrids are listed in descending order of lb milk/acre.

Table 13. Three-Year Corn Silage Test Results (2016, 2017 & 2018) at the Southwest Virginia Site

Brand	Hybrid	DTM ¹	DM at Harvest	Yield at 35% DM		DM Yield	Crude Protein	ADF	NDF	NDF Digest.	NE _L	TDN	Milk2006	Milk2006
		--Days--	%	ton/acre	ton/acre						Mcal/lb	%	lb milk/ton	lb milk/acre
Seed Consultants	SC 11AQ17™	111	37.35	33.80 *	11.83 *	7.54	28.55	49.31	62.41 *	0.57	56.88	2289	27763 *	
Pioneer	2088AMX	120	38.48	33.36 *	11.68 *	8.38	26.76 *	48.50	61.78 *	0.57	57.05	2302	27283 *	
Augusta	A7768	118	37.19	33.00 *	11.55 *	8.68 *	26.46 *	47.41	61.64	0.57	55.87	2225	25897 *	
Seed Consultants	SCS 1125YHR™	112	37.14	30.92	10.82	8.79 *	25.97 *	46.35 *	61.62	0.59 *	59.16 *	2442 *	25552 *	
Seed Consultants	SCS 11HR63™	116	39.86 *	32.76 *	11.47 *	8.22	26.82 *	47.13 *	60.96	0.56	55.86	2211	25452 *	
Masters Choice	MCT6733	117	40.51 *	34.70 *	12.14 *	8.43	26.17 *	47.26 *	61.71	0.55	54.42	2112	24781	
Seed Consultants	SCS 1136YHR™	113	37.45	29.17	10.21	8.33	26.58 *	47.41	63.30 *	0.58	58.08	2360	23646	
Masters Choice	MCT6363	113	36.69	27.28	9.55	8.00	26.65 *	47.27 *	61.79 *	0.60 *	60.06 *	2509 *	23377	
Pioneer	0843AM	108	41.39 *	29.07	10.18	8.41	26.20 *	45.79 *	59.32	0.56	55.87	2211	21995	
Site Average			38.45	31.56	11.05	8.31	26.68	47.38	61.62	0.57	57.03	2296	25083	
LSD (0.10)			2.09	3.33	1.17	0.35	0.86	1.48	1.54	0.01	1.30	95	2550	
C.V.			7.44	14.53	14.53	5.69	4.42	4.29	3.42	3.47	3.13	6	14	

¹Days to maturity provided by company; differences in maturity rating methods may exist between companies.

* Indicates numbers not significantly different from the highest (or lowest for ADF and NDF) value in that column, i.e. within one LSD of the top performer.

Hybrids are listed in descending order of lb milk/acre.

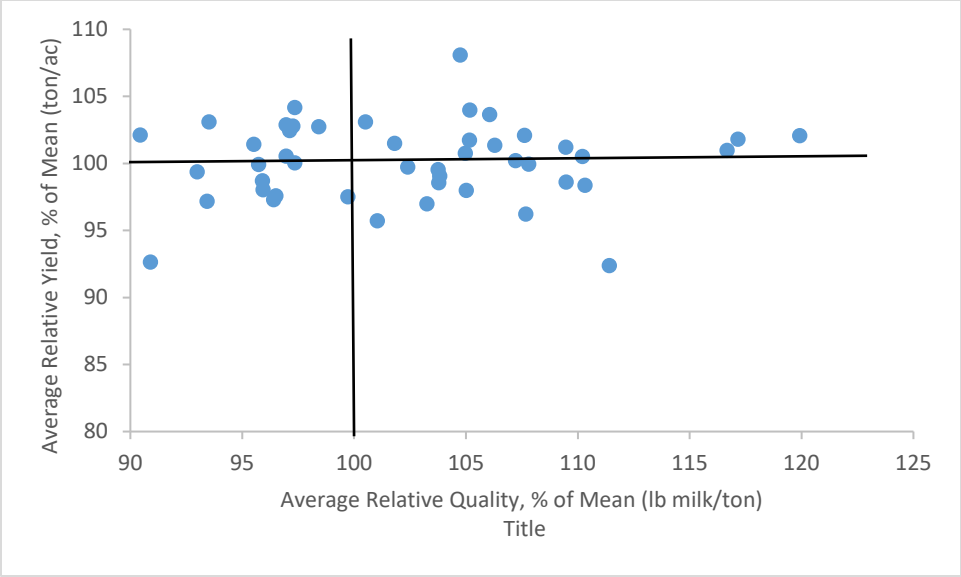
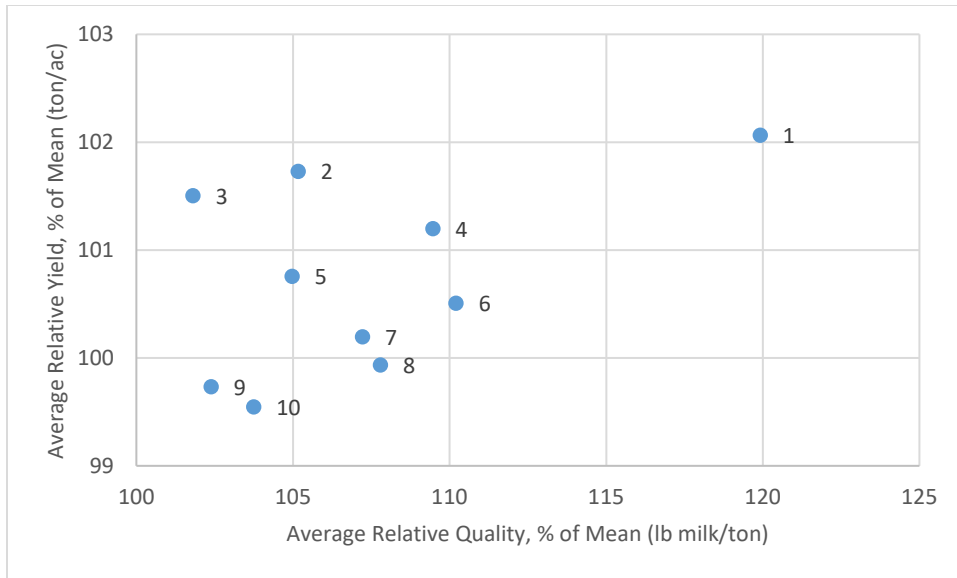


Figure 1. Average relative yield versus quality across sites, 2018



1	Augusta	A1165
2	Pioneer	2088AMX
3	Mid-Atlantic	MA5161
4	Seed Consultants	SCS 1187YHR™
5	Seed Consultants	SC 11AQ17™
6	Progeny Ag Products	PGY 6119VT2P
7	Seed Consultants	SCS 1168YHR™
8	Pioneer	1555CHR
9	NK	NK1808-3111
10	Seed Consultants	SCS 1158YHR™

Figure 2. High yielding and high quality hybrids in at least 3 site/year combinations in 2018.