



Virginia Cooperative Extension

Virginia Tech • Virginia State University

www.ext.vt.edu

Virginia Tech Corn Silage Testing 2019

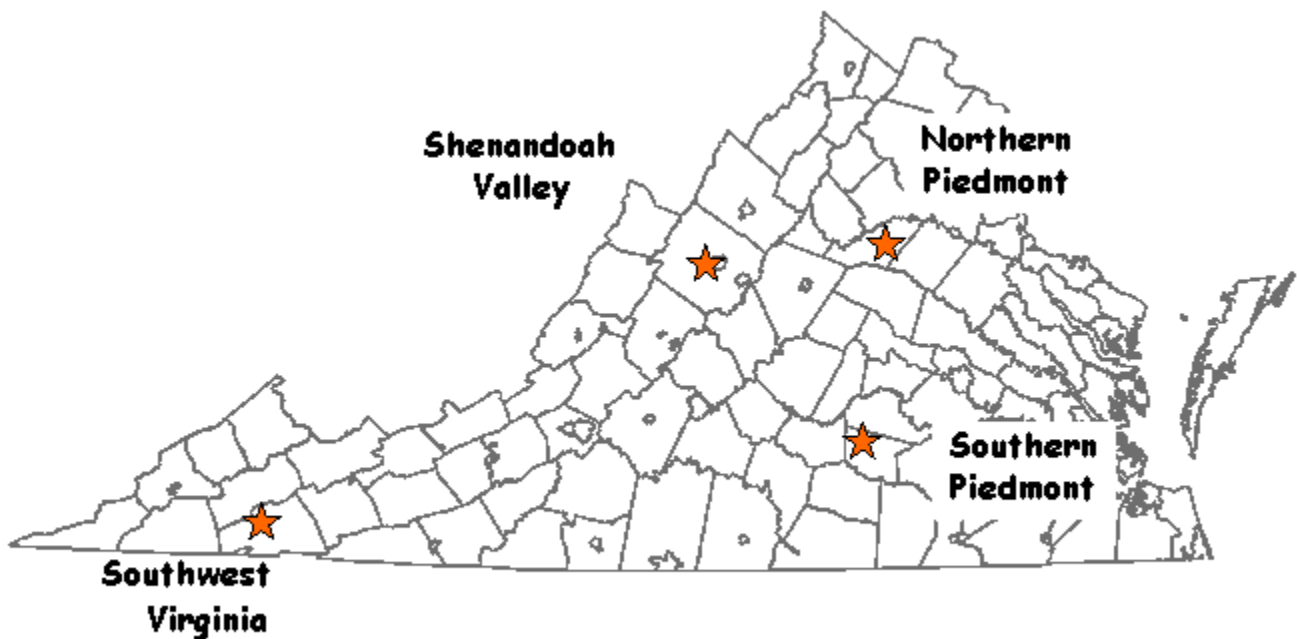


TABLE OF CONTENTS

Companies participating in the 2019 Corn Silage Hybrid Trials.....	1
2019 Corn Silage Hybrid Trials Narrative.....	1
2019 Corn Silage Plot Information.....	4
Table 1. List of Hybrids in 2019 VA Tech Corn Silage Hybrid Test.....	5
Handy Bt Trait Table.....	6
Table 2. Multi-year, Multi-site Relative Ton per Acre (Yield).....	8
Table 3. Multi-year, Multi-site Relative Milk per Ton (Quality)	10
Table 4. Multi-year, Multi-site Relative Milk per Acre (Yield x Quality).....	12
Table 5. 2019 Corn Silage Test Results at the Shenandoah Valley Site.....	14
Table 6. 2019 Corn Silage Test Results at the Northern Piedmont Site.....	15
Table 7. Two Year Average Corn Silage Test Results (2018 and 2019) at the Northern Piedmont Site.....	16
Table 8. Three Year Average Corn Silage Test Results (2017, 2018 and 2019) at the Northern Piedmont Site.....	17
Table 9. 2019 Corn Silage Test Results at the Southern Piedmont Site	18
Table 10. Two Year Average Corn Silage Test Results (2018 and 2019) at the Southern Piedmont Site	19
Table 11. Three Year Average Corn Silage Test Results (2017, 2018 and 2019) at the Southern Piedmont Site ..	20
Table 12. 2019 Corn Silage Test Results at the Southwest Site.....	21
Table 13. Two Year Average Corn Silage Test Results (2018 and 2019) at the Southwest Site	22
Table 14. Three Year Average Corn Silage Test Results (2017, 2018 and 2019) at the Southwest Site.....	23
Figure 1. Average Relative Yield versus Quality across Sites, 2019	24
Figure 2. High Yielding and High-Quality Hybrids in at Least 3 Site/Year Combinations in 2019.....	25

THE 2019 VIRGINIA CORN SILAGE HYBRID TRIALS

Coordinated by H. Behl, E. Rucker, and W. Thomason
School of Plant and Environmental Sciences
Virginia Tech, Blacksburg, VA
Other contributors: David Yutzy; Doug Horn; Greg Lillard;
Ned Jones; Phil Blevins

COMPANIES PARTICIPATING IN THE 2019 CORN SILAGE TRIALS

Company	Brand	Address
AgReliant Genetics	LG Seeds	1122 E. 169 th St., Westfield, IN 46074
Augusta Seed	Augusta Seed	PO Box 899, Verona, VA 24482
Bayer	Hubner Seed	306 North Main St., Monticello, IN 47960
Caverndale Farms	Caverndale Farms	1921 Bluegrass Pike, Danville, KY 40422
Corteva Agriscience Ag. Division		
Dow/Dupont	Pioneer	7200 NW 62 nd Ave., Johnston, IA 50131
Erwin-Keith, Inc.	Progeny Ag Products	1529 Hwy 193, Wynne, AR 72396
King's AgriSeeds, Inc.	Red Tail	1828 Freedom Road Suite 101, Lancaster, PA 17601
Masters Choice	Masters Choice	305 W. Vienna St., Anna, IL 62906
Mid-Atlantic Seeds	Mid-Atlantic	204 St. Charles Way #163E, York, PA 17402
Monsanto	Channel	800 N Lindbergh Blvd., St Louis, MO 63167
Nutrien Ag Solutions	Dyna-Gro	396 Washington St., Boydton, VA 23917
Seed Consultants, Inc.	Seed Consultants	648 Miami Trace Rd, Washington Court House, OH 43160
Syngenta Seeds	NK Brand	11055 Wayzata Blvd., Minnetonka, MN 55305

NARRATIVE

This report contains the results for performance trials from commercial corn hybrids produced for silage at four locations in Virginia in 2019 as well as two- and three-year average performance, when available. In order to avoid problems with comparisons over sites and years, multi-year yields are presented as a percentage of the total called relative yield at that particular site-year combination. All locations were planted with a Wintersteiger PlotKing 2600 planter and harvested with commercial silage equipment. Yields are presented on a dry matter and 35% dry matter basis for comparison. Quality analysis was performed using a Foss NIR XDS Rapid Content Analyzer. All hybrids entered in the Virginia trials were submitted for testing by commercial companies. The locations at which particular hybrids were entered were specified by the company. Companies entering hybrids were charged a fee for each hybrid per location to support the Virginia Corn Silage Performance Trials.

Yield Differences

Experimental plots vary in yield and other measurements due to location in the field and other factors which cannot be controlled. Statistics given in the tables are intended to help the reader make valid comparisons between hybrids. The magnitude of difference due to uncontrollable variation has been computed for the data and is listed at the bottom of columns as the LSD (.10) (least significant difference with 90% confidence). Differences less than the LSD are assumed not to be real differences with 90% confidence.

Hybrid Choices

Multi-year results are more reliable than single-year results.

When making hybrid selections it is important to realize that hybrids differ in their performance under differing environments. Some hybrids are more adapted to a wide range of environments. Hybrid performance may differ with year and location variations of rainfall, temperature, pests and other environmental variables. In these experiments, many hybrids have essentially the same yield, and great care should be taken in interpreting the results of a single year's tests, especially at only one location.

For these reasons it is important, whenever possible, to also look at a hybrid's average yield across locations when making selections. Multi-year averages give greater confidence to hybrid performance decisions. Relative yield tables compare the yield of a hybrid to the average yield of all hybrids in the test. These tables are an excellent summary of yield potential compared to other hybrids.

Understanding Relative Yield

Companies entering silage hybrids decide which hybrids are planted at which locations. In 2017, some hybrids were planted at all four locations and others at only one or two sites.

Combining and comparing absolute yield and other results from multiple sites is inappropriate when not all hybrids are planted at all locations. For example, one hybrid might have an unfair advantage in such a comparison because it was tested only at sites with ideal growing conditions. Another hybrid tested at sites with less-than-ideal growing conditions would have yields that tended to be lower. In this example, it would be difficult to determine whether yield differences were because of differences in genetic yield potential or simply because of differences in the environmental conditions under which they were tested. The solution is to compare hybrids based on relative yields rather than absolute yields.

To calculate relative yield, the yield for each hybrid at each site is divided by the average yield for all hybrids tested at that same site and multiplied by 100. Once each hybrid at each site has been assigned a relative yield, comparisons can be made between hybrids tested at the same site or different sites. For hybrids tested at multiple sites, we can also calculate a multi-site relative yield average.

Relative yields of 100 indicate hybrids that were average performers. Relative yields greater than 100 indicate yields above-average. Relative yields less than 100 indicate yields below-average. The magnitude of the relative yield numbers indicate how far above or below average a hybrid performed. For example, a hybrid with a relative yield of 110 yielded 10% above the average yield for all hybrids at that site.

Selecting hybrids for both yield and quality.

Milk2006 is used to condense multiple corn silage quality and digestibility factors into one easy-to-compare “milk per ton” number. This system also generates a “milk per acre” rating for each hybrid, calculated by multiplying yield (tons per acre) by quality (pounds of milk per ton). The same problem described above for multi-site yield comparisons exists for yield by quality comparisons: not all hybrids were tested at all sites. Therefore, relative quality and relative yield x quality ratings were calculated.

Milk2006 is a system developed by University of Wisconsin researchers to simplify quality comparisons between corn silage samples. Included in the analysis are variety identification, kernel processing, dry matter, crude protein, NDF, in-vitro NDF digestibility, starch percent and yield per acre. Compared to Milk2000, Milk2006 values more accurately address the effects of fiber digestibility on silage quality. Milk2006 has proven to more accurately reflect actual milk production than earlier versions of the program.

Milk2006 was designed solely as an index to be used when making quality comparisons between silage samples or hybrids. Milk per ton or milk per acre numbers should not be used to predict actual milk production on your farm. Milk per ton is more accurate at predicting cow performance since it includes quality factors that affect milk production. Milk per acre allows consideration of yield as well as quality factors.

Use other information.

Consider as much other information as possible from other independent sources before selecting hybrids. Look for agronomic as well as silage quality data.

2019 VIRGINIA CORN SILAGE PLOT INFORMATION
(Rates are on a per acre basis.)

Blackstone (Southern Piedmont Agricultural Research & Extension Center)

Planted: April 11, 2019 conventional tillage

Harvested: August 6-7, 2019

Pesticide: 2 qt Brawl ATZ April 12, 2019

Fertilizer: lb 10-10-10 pre-plant incorporated April 11, 2019; 17 gal 15-15-0-2S-.13B-.25Zn at planting; 80 lb N top-dressed using UAN May 9, 2019

Population: 27,125 ppa

Plot Size: 2 rows 25' x 30" 4 replications

Soil Type: Appling and Durham sandy loam

Cooperator: Ned Jones

Orange (Northern Piedmont Center)

Planted: April 24, 2019 no-till

Harvested: August 12, 2019

Pesticide: 1.5 qt Acuron® + 2 qt glyphosate April 19, 2019 pre-plant; 5 lb Force 3G® at planting; 1 pt atrazine + 1.5 qt Acuron® May 10, 2019 post-plant

Fertilizer: 275 lb 30-80-60 April 29, 2019; 120 lb N side-dressed May 23, 2019

Population: 29,400 ppa

Plot Size: 2 rows 25' x 30" 4 replications

Soil Type: Starr silt loam

Cooperators: Brad Lael, Steve Gulick

Shenandoah Valley (Timberville - Thanks to David Yutzy and Windcrest Dairy)

Planted: May 20, 2019 No-till after triticale

Harvested: September 17, 2019

Pesticide: 5 lb Force 3G® at planting; 1.5 qt glyphosate + 1 qt atrazine preplant; 0.9 oz Accent® June 4, 2019

Fertilizer: 6000 gallons dairy manure preplant; 17 gal 15-15-0-2S-.13B-.25Zn at planting; 60 lb N side-dressed

Population: 33,350 ppa

Cooperators: Doug Horn and David Yutzy

Washington County (Southwest Virginia Agricultural Research & Extension Center)

Planted: May 16, 2019 no-till after soybeans

Harvested: September 13, 2019

Pesticide: 0.8 qt Atrazine + 2.8 qt Lumax® pre-plant; 5 lb Force 3G® at planting

Fertilizer: 100-80-160-25S preplant; 17 gal 15-15-0-2S-.13B-.25Zn at planting; 100 lb N side-dressed V9-V10

Population: 29,780 ppa

Plot Size: 2 rows 35' x 30" 4 replications

Soil Type: Wyrick-Marbie silt loam

Cooperators: Phil Blevins

Table 1. List of Hybrids in the 2019 VA Tech Corn Silage Hybrid Test

Brand	Hybrid	DTM¹	Insecticidal Seed Treatment	Genetic Trait Package	OBS²
Augusta	A1059	109	CruiserMaxx® 500 + Avicta® Complete 500	Agrisure 3000GT and 3011A	2
Augusta	A5262	112	Cruiser Maxx® 250	Agrisure 3000GT and 3011A	2
Augusta	A5663-3000GT	113	Cruiser Maxx® 250	Agrisure 3000GT and 3011A	1
Augusta	A1165	115	Cruiser Maxx® 250	VT Double PRO	1
Augusta	A1367	117	Cruiser Maxx® 250	Agrisure Duracade 5222 E-Z Refuge	1
Augusta	A9967	117	Cruiser Maxx® 250	Agrisure 3000GT and 3011A	4
Augusta	A7768	118	Cruiser Maxx® 250	Agrisure Viptera 3110	1
Caverndale Farms	CF 753 GTCBLL	108	Cruiser Maxx® 250 + Vibrance®	Agrisure 3010 and 3010A	1
Caverndale Farms	CF 814 3000GT	113	Cruiser Maxx® 250 + Vibrance®	Agrisure 3000GT and 3011A	1
Caverndale Farms	CF 859 VIP 3111	114	Cruiser Maxx® 250 + Vibrance®	Agrisure Viptera 3111	1
Caverndale Farms	CF 873 VIP 3110	116	Cruiser Maxx® 250 + Vibrance®	Agrisure Viptera 3110	1
Caverndale Farms	CF 888 3000GT	117	Cruiser Maxx® 250 + Vibrance®	Agrisure 3000GT and 3011A	1
Channel	210-98STXRIB	110	Poncho® 500/VOTiVO®	SmartStax Refuge Advanced	4
Channel	213-93STXRIB	113	Poncho® 500 + NemaStrike™	SmartStax Refuge Advanced	4
Channel	215-98STXRIB	115	Poncho® 500/VOTiVO®	SmartStax Refuge Advanced	4
Channel	219-77STXRIB	119	Poncho® 500/VOTiVO®	SmartStax Refuge Advanced	4
Dyna-Gro	D52VC63	112	Acceleron® 500/Poncho® 500/VOTiVO®500 EDC	VT Double PRO	1
Dyna-Gro	D55VC80	115	Acceleron® 500/Poncho® 500/VOTiVO®500 EDC	VT Double PRO	1
Dyna-Gro	D57VC17	117	Acceleron® 500/Poncho® 500/VOTiVO®500 EDC	VT Double PRO	1
Dyna-Gro	D58VC65	118	Acceleron® 500/Poncho® 500/VOTiVO®500 EDC	VT Double PRO	1
Hubner Seed	H6624RCSS	112	Poncho® 500/VOTiVO® EDC	SmartStax RIB Complete	4
Hubner Seed	H6663RCSS	113	Poncho® 500/VOTiVO® EDC	SmartStax RIB Complete	4
Hubner Seed	H6764RCSS	114	Poncho® 500/VOTiVO® EDC	SmartStax RIB Complete	4
Hubner Seed	H6755RCSS	114	Poncho® 500/VOTiVO® EDC	SmartStax RIB Complete	4
Hubner Seed	H6763RCSS	115	Poncho® 500/VOTiVO® EDC	SmartStax RIB Complete	4
Hubner Seed	H6867RCSS	116	Poncho® 500/VOTiVO® EDC	SmartStax RIB Complete	4
Hubner Seed	H6890RCSS	117	Poncho® 500/VOTiVO® EDC	SmartStax RIB Complete	4
LG Seeds	LG5643VT2RIB	114	Poncho® 500/VOTiVO®	VT Double PRO RIB Complete	2
LG Seeds	LG5650VT2RIB	115	Poncho® 500/VOTiVO®	VT Double PRO RIB Complete	2
LG Seeds	LG68C22VT2PRO	118	Poncho® 500/VOTiVO®	VT Double PRO	2
Masters Choice	MCT6552	115	Cruiser Maxx® 250	Agrisure Viptera 3110	3
Masters Choice	MCT6653	116	Cruiser Maxx® 250	Agrisure 3000GT and 3011A	3
Mid-Atlantic	MA8128VT2P	112	Acceleron® 250	VT Double PRO	1
Mid-Atlantic	MA8141	114	Acceleron® 250	VT Double PRO	1
Mid-Atlantic	MA5166	115	Cruiser Maxx® 250	Agrisure Viptera 3111	1
Mid-Atlantic	MA9151	115	Cruiser Maxx® 250	conventional	1
NK Brand	NK1205-3120	112	CruiserMaxx® 500 + Avicta® Complete 500	Agrisure 3120 E-Z Refuge	2
NK Brand	NK1573-3330	115	CruiserMaxx® 500 + Avicta® Complete 500	Agrisure Viptera 3330 E-Z Refuge	2
NK Brand	NK1808-3111	118	CruiserMaxx® 500 + Avicta® Complete 500	Agrisure Viptera 3111	2
Pioneer	P1197AMXT	111	Poncho® 1250/VOTiVO®	AcreMax Xtreme	4
Pioneer	P1847VYHR	113	Poncho® 1250/VOTiVO®	Leptra	4
Pioneer	P1366AMXT	114	Poncho® 1250/VOTiVO®	AcreMax Xtreme	4
Progeny Ag Products	PGY 7118VT2P	118	Acceleron® 500/VOTiVO®500 EDC/B300	VT Double PRO	4
Red Tail	RT 67T23	117	Fortenza™ + Maxim® Quattro Vibrance®	Agrisure 3000GT and 3011A	1
Red Tail	RT 63T13	117	Fortenza™ + Maxim® Quattro Vibrance®	Agrisure 3000GT and 3011A	1
Seed Consultants	SC EX 110YHR™	108	Poncho® 1250/VOTiVO®	Intrasect	4
Seed Consultants	SCS 1125YHR™	112	Poncho® 1250/VOTiVO®	Intrasect	4
Seed Consultants	SCS 1158YHR™	115	Poncho® 500/VOTiVO®	Intrasect	4
Seed Consultants	SCS 1168YHR™	116	Poncho® 500/VOTiVO®	Intrasect	4
Seed Consultants	SC 11AQ74™	117	Poncho® 500/VOTiVO®	Agrisure 3000GT and 3011A	4
Seed Consultants	SC EX 115YHR™	117	Poncho® 1250/VOTiVO®	Intrasect	4
Seed Consultants	SCS 1188AM™	118	Poncho® 500/VOTiVO®	AcreMax	4

¹ Days to maturity (DTM) provided by company; differences in maturity rating methods may exist.

² Number of observations hybrid occurred; the greater the observations, the more reliable the data.

Shaded hybrids indicate hybrids entered in less than 3 locations. Hybrids are sorted by Brand then DTM.

The Handy Bt Trait Table

for U.S. Corn Production

The latest version of this document is always posted at

<https://www.texasinsects.org/bt-corn-trait-table.html>

For questions & corrections: Chris DiFonzo, Michigan State Univ., difonzo@msu.edu

Contributor: Pat Porter, Texas A&M University (southern version of the table)

**Updated
November
2018**

Most corn hybrids planted in the U.S. have transgenic traits for insect management. The Handy Bt Trait Table provides a helpful list of trait names (below) and details of trait packages (over) to make it easier to understand company seed guides, sales materials, and bag tags.

New for 2019

- ✓ Recent mergers resulted in name changes for several seed companies. While your local seed rep may have a new business card, the names of trait packages remain the same, listed alphabetically on page 2.
- ✓ *Bt Resistance* is arguably the most important issue facing growers, extension entomologists, and seed company agronomists. Problems continue to increase in regions where field failures were already found, and new cases of resistance are reported every season. To date, resistance is confirmed to all Bt toxins targeting western corn rootworm, particularly in the central corn belt. In the southern states, corn earworm and fall armyworm resistance is expanding, while Cry1F no longer controls western bean cutworm in the Great Lakes region. These species were once secondary to European corn borer in importance, but now they are of primary concern for many growers. It is critical to be up-to-date on resistance development in your local area so that you know the limitations of the Bt traits you plant.

Field corn 'events' (transformations of one or more genes) and their Trade Names

Trade name for trait	Event	Protein(s) expressed	Primary Insect Targets + <i>Herbicide tolerance</i>
Agrisure CB/LL	Bt11	Cry1Ab + <i>PAT</i>	corn borer + <i>glufosinate</i>
Agrisure Duracade	5307	eCry3.1Ab	rootworm
Agrisure GT	GA21	<i>EPSPS</i>	<i>glyphosate</i>
Agrisure RW	MIR604	mCry3A	rootworm
Agrisure Viptera	MIR162	Vip3A	broad caterpillar control, except for corn borer
Enlist	DAS40278	<i>aad-1</i>	<i>2,4-D herbicide detoxification</i>
Herculex I (HXI) or CB	TC1507	Cry1Fa2 + <i>PAT</i>	corn borer + <i>glufosinate</i>
Herculex CRW	DAS-59122-7	Cry34Ab1/Cry35Ab1 + <i>PAT</i>	rootworm + <i>glufosinate</i>
(None – part of Qrome)	DP-4114	Cry1F + Cry34Ab1/Cry35Ab1 + <i>PAT</i>	corn borer + rootworm + <i>glufosinate</i>
Roundup Ready 2	NK603	<i>EPSPS</i>	<i>glyphosate</i>
Yieldgard Corn Borer	MON810	Cry1Ab	corn borer
Yieldgard Rootworm	MON863	Cry3Bb1	rootworm
Yieldgard VT Pro	MON89034	Cry1A.105 + Cry2Ab2	corn borer & several caterpillar species
Yieldgard VT Rootworm	MON88017	Cry3Bb1 + <i>EPSPS</i>	rootworm + <i>glyphosate</i>

Abbreviations used in the Trait Table

Herbicide traits

GT *glyphosate tolerant*

LL Liberty Link - *glufosinate-tolerant*

RR2 Roundup Ready 2, *glyphosate-tolerant*

Insect targets

BCW black cutworm

CEW corn earworm

CRW corn rootworm

ECB European corn borer

FAW fall armyworm

SB stalk borer

SCB sugarcane borer

SWCB southwestern corn borer

TAW true armyworm

WBC western bean cutworm

The Handy Bt Trait Table for U.S. Corn Production, updated November 2018

Trait packages in alphabetical order (acronym)	Bt protein(s) in the trait package	Marketed for control of:												Insects resistant to the combination of Bt proteins in the trait package	Herbicide trait		Non-Bt Refuge % (cornbelt)	
		B C W	C E W	E C B	F A W	S C B	S C B	S C B	W C B	T A W	W C C	W C W	W C W		GT RR2	LL		
1-AcreMax (AM)	Cry1Ab Cry1F	x		x	x	x	x	x	x						FAW WBC	x	x	5% in bag
2-AcreMax CRW (AMRW)	Cry34/35Ab1													x	CRW	x	x	10% in bag
3-AcreMax1 (AM1)	Cry1F Cry34/35Ab1	x		x	x	x	x	x	x					x	FAW SWCB WBC CRW	x	x	10% in bag 20% ECB
4-AcreMax Leptra (AML)	Cry1Ab Cry1F Vip3A	x	x	x	x	x	x	x	x	x	x					x	x	5% in bag
5-AcreMax TRIssect (AMT)	Cry1Ab Cry1F mCry3A	x		x	x	x	x	x	x					x	FAW WBC CRW	x	x	10% in bag
6-AcreMax Xtra (AMX)	Cry1Ab Cry1F Cry34/35Ab1	x		x	x	x	x	x	x					x	FAW WBC CRW	x	x	10% in bag
7-AcreMax Xtreme (AMXT)	Cry1Ab Cry1F mCry3A Cry34/35Ab1	x		x	x	x	x	x	x					x	FAW WBC CRW	x	x	5% in bag
8-Agrisure 3010 and 3010A	Cry1Ab			x				x	x							x	x	20%
9-Agrisure 3000GT and 3011A	Cry1Ab mCry3A			x				x	x					x	CRW	x	x	20%
10-Agrisure Viptera 3110	Cry1Ab Vip3A	x	x	x	x	x	x	x	x	x	x					x	x	20%
11-Agrisure Viptera 3111	Cry1Ab Vip3A mCry3A	x	x	x	x	x	x	x	x	x	x	x			CRW	x	x	20%
12-Agrisure 3120 E-Z Refuge	Cry1Ab Cry1F	x		x	x	x	x	x	x						FAW WBC	x		5% in bag
13-Agrisure 3122 EZ Refuge	Cry1Ab Cry1F mCry3A Cry34/35Ab1	x		x	x	x	x	x	x					x	FAW WBC CRW	x	See bag tag for code	5% in bag
14-Agrisure Viptera 3220 E-Z Refuge	Cry1Ab Cry1F Vip3A	x	x	x	x	x	x	x	x	x	x					x		5% in bag
15-Agrisure Viptera 3330 E-Z Refuge	Cry1Ab Vip3A Cry1A.105 + Cry2Ab2	x	x	x	x	x	x	x	x	x	x					x	EZ0 NO	5% in bag
16-Agrisure Duracade 5122 E-Z Refuge	Cry1Ab Cry1F mCry3A eCry3.1Ab	x		x	x	x	x	x	x					x	FAW WBC CRW	x	EZ1 YES	5% in bag
17-Agrisure Duracade 5222 E-Z Refuge	Cry1Ab Cry1F Vip3A mCry3A eCry3.1Ab	x	x	x	x	x	x	x	x	x	x	x			CRW	x		5% in bag
18-Herculex I (HXI)	Cry1F	x		x	x	x	x	x	x						FAW SWCB WBC	x	x	20%
19-Herculex RW (HXRW)	Cry34/35Ab1													x	CRW	x	x	20%
20-Herculex XTRA (HXX)	Cry1F Cry34/35Ab1	x		x	x	x	x	x	x					x	FAW SWCB WBC CRW	x	x	20%
21-Intrasect (YHR)	Cry1Ab Cry1F	x		x	x	x	x	x	x						FAW WBC	x	x	5%
22-Intrasect TRIssect (CYHR)	Cry1Ab Cry1F mCry3A	x		x	x	x	x	x	x					x	FAW WBC CRW	x	x	20%
23-Intrasect Xtra (YXR)	Cry1Ab Cry1F Cry34/35Ab1	x		x	x	x	x	x	x					x	FAW WBC CRW	x	x	20%
24-Intrasect Xtreme (CYXR)	Cry1Ab Cry1F mCry3A Cry34/35Ab1	x		x	x	x	x	x	x					x	FAW WBC CRW	x	x	5%
25-Leptra (VYHR)	Cry1Ab Cry1F Vip3A	x	x	x	x	x	x	x	x	x	x					x	x	5%
26-Powercore ^a	Cry1A.105 Cry2Ab2	x	x	x	x	x	x	x	x						CEW WBC	x	x	^a 5%
27-Powrcore Refuge Advncd ^b	Cry1F																	^b 5% in bag
28-QROME (Q)	Cry1Ab Cry1F mCry3A Cry34/35Ab1	x		x	x	x	x	x	x					x	FAW WBC CRW	x	x	5% in bag
29-SmartStax ^a	Cry1A.105 Cry2Ab2	x	x	x	x	x	x	x	x					x	CEW WBC CRW	x	x	^a 5%
30-Smartstx Refuge Advncd ^b	Cry1F Cry3Bb1																	^b 5% in bag
31-SmartStax RIB Complete ^b	Cry34/35Ab1																	
32-Trecepta ^a	Cry1A.105 Cry2Ab2	x	x	x	x	x	x	x	x	x	x					x		^a 5%
33-Trecepta RIB Complete ^b	Vip3A																	^b 5% in bag
34-TRIssect (CHR)	Cry1F mCry3A	x		x	x	x	x	x	x					x	FAW SWCB WBC CRW	x	x	20%
35-VT Double PRO ^a	Cry1A.105 Cry2Ab2		x	x	x	x	x	x	x						CEW	x		^a 5%
36-VT Dble PRO RIBComplete ^b																		^b 5% in bag
37-VT Triple PRO ^c	Cry1A.105 Cry2Ab2		x	x	x	x	x	x	x					x	CEW CRW	x		^c 20%
38VT TriplePRORIBComplete ^d	Cry3Bb1																	^d 10% in bag
39Yieldgard Corn Borer(YGCB)	Cry1Ab			x				x	x							x		20%
40YieldgardRootworm(YGRW)	Cry3Bb1													x	CRW	x		20%
41----Yieldgard VT Triple	Cry1Ab Cry3Bb1			x				x	x					x	CRW	x		20%

Table 2. Multi-year, Multi-site Relative Ton per Acre (Yield)

Brand	Hybrid	DTM per Co. ¹	Shenandoah Valley		Northern Piedmont		Southern Piedmont		Southwest / Mountain		Multi-Site Average	Number of Obs. ²
			2019	2018 ⁴	2019	2018	2019	2018	2019	2018		
-----Relative Ton per Acre ³ -----												
Augusta	A1367	117	128 *	---	---	---	---	---	---	---	128	1
Mid-Atlantic	MA5166	115	125 *	---	---	---	---	---	---	---	125	1
Caverndale Farms	CF 859 VIP 3111	114	---	---	---	---	---	119 *	---	---	119	1
LG Seeds	LG5643VT2RIB	114	125 *	99	---	---	---	---	---	---	112	2
Mid-Atlantic	MA8141	114	112 *	---	---	---	---	---	---	---	112	1
Seed Consultants	SCS 1158YHR™	115	120 *	111 *	110	105 *	93	102 *	127 *	---	110	7
Dyna-Gro	D57VC17	117	---	---	---	109 *	---	---	---	---	109	1
Channel	219-77STXRIB	119	101	119 *	130 *	114 *	102	96	99	---	109	7
Pioneer	P1847VYHR	113	113 *	107	---	102	---	112 *	---	---	109	4
Mid-Atlantic	MA8128VT2P	112	108 *	---	---	---	---	---	---	---	108	1
Augusta	A5663-3000GT	113	122 *	---	---	---	---	---	94	---	108	2
Seed Consultants	SC EX 115YHR™	117	126 *	97	---	104	---	102 *	---	---	107	4
Seed Consultants	SCS 1168YHR™	116	94	105	116	104	108 *	114 *	105	---	107	7
Hubner Seed	H6867RCSS	116	108 *	102	---	102	---	111 *	---	---	106	4
NK Brand	NK1808-3111	118	107 *	111 *	98	---	105 *	---	---	---	105	4
Hubner Seed	H6764RCSS	114	130 *	100	---	88	---	101 *	---	---	105	4
Seed Consultants	SCS 1188AM™	118	97	99	---	108 *	---	115 *	---	---	105	4
NK Brand	NK1573-3330	115	112 *	96	---	---	---	---	---	---	104	2
Caverndale Farms	CF 888 3000GT	117	---	---	---	---	---	91	117 *	---	104	2
Augusta	A9967	117	95	110 *	---	99	---	112 *	---	---	104	4
Dyna-Gro	D55VC80	115	---	103	---	---	---	---	---	---	103	1
LG Seeds	LG68C22VT2PRO	116	103 *	103	---	---	---	---	---	---	103	2
Progeny Ag Products	PGY 7118VT2P	118	86	103	141 *	106 *	95	96	92	---	103	7
Masters Choice	MCT6653	116	---	91	87	107 *	111 *	107 *	107	---	102	6
LG Seeds	LG5650VT2RIB	115	99	104	---	---	---	---	---	---	101	2
Augusta	A5262	112	107 *	---	---	---	100	98 *	99	---	101	4
Caverndale Farms	CF 873 VIP 3110	116	---	---	---	---	---	101 *	---	---	101	1
Hubner Seed	H6624RCSS	112	101	97	---	91	---	113 *	---	---	101	4
Mid-Atlantic	MA9151	115	100	---	---	---	---	---	---	---	100	1
Caverndale Farms	CF 753 GTCBLL	108	---	---	---	---	---	99 *	---	---	99	1

Table 2. Multi-year, Multi-site Relative Ton per Acre (Yield)

Brand	Hybrid	DTM per Co. ¹	Shenandoah Valley		Northern Piedmont		Southern Piedmont		Southwest / Mountain		Multi-Site Average	Number of Obs. ²
			2019	2018 ⁴	2019	2018	2019	2018	2019	2018		
-----Relative Ton per Acre ³ -----												
Dyna-Gro	D52VC63	112	---		98	---	---	---	---	---	98	1
Pioneer	P1366AMXT	114	83		111 *	---	100	---	98 *	---	98	4
Seed Consultants	SC EX 110YHR™	108	92		92	---	106 *	---	101 *	---	98	4
Channel	210-98STXRIB	110	105 *		92	91	93	99	107 *	97	98	7
Channel	215-98STXRIB	115	87		91	119	103	94	95	88	97	7
Hubner Seed	H6763RCSS	115	104 *		89	---	104	---	91	---	97	4
Augusta	A1165	115	94		---	---	---	---	---	98	96	2
Red Tail	RT 67T23	117	95		---	---	---	---	---	---	95	1
Masters Choice	MCT6552	115	---		101	91	98	92	101 *	88	95	6
Seed Consultants	SCS 1125YHR™	112	80		107	82	90	100	121 *	85	95	7
Hubner Seed	H6663RCSS	113	93		92	---	99	---	93	---	94	4
Caverndale Farms	CF 814 3000GT	113	---		---	---	---	---	88	101	94	2
Augusta	A7768	118	---		---	---	---	---	97	91	94	2
Hubner Seed	H6890RCSS	117	69		95	---	101	---	109 *	---	94	4
NK Brand	NK1205-3120	112	88		94	85	---	107 *	---	---	93	4
Augusta	A1059	109	105 *		---	---	---	---	81	---	93	2
Seed Consultants	SC 11AQ74™	117	98		88	---	87	---	94	---	92	4
Channel	213-93STXRIB	113	86		101	---	98	---	79	---	91	4
Hubner Seed	H6755RCSS	114	87		91	---	92	---	93	---	91	4
Dyna-Gro	D58VC65	118	---		---	---	94	---	---	81	87	2
Pioneer	P1197AMXT	111	59		100	---	95	---	82	---	84	4
Red Tail	RT 63T13	117	73		---	---	---	---	---	---	73	1

¹ Days to maturity provided by company; differences in maturity rating methods may exist between companies.

² Hybrids tested over more site/year combinations provide a better estimate of hybrid performance than those tested only in a single site/year location.

³ Relative Ton per Acre (yield) calculated by dividing Ton per Acre for each hybrid at each site/year by the average Ton per Acre for that site/year.

⁴ Shenandoah Valley was not harvested in 2018 due to very poor stand post-planting, most likely caused by slugs.

Numbers over 100 indicate above-average yield, 100 indicates average yield, numbers under 100 indicate below-average yield.

* Indicates numbers similar to the highest value in that column (i.e. within one LSD of the top performer.)

Shading indicates hybrids that were in the highest yielding group in at least three site years.

Table 3. Multi-year, Multi-site Relative Milk per Ton (Quality)

Brand	Hybrid	DTM per Co. ¹	Shenandoah Valley		Northern Piedmont		Southern Piedmont		Southwest / Mountain		Multi-Site Average	Number of Obs. ²
			2019	2018 ⁴	2019	2018	2019	2018	2019	2018		
-----Relative Milk per Ton ³ -----												
Augusta	A7768	118	---	---	---	---	---	---	114 *	107 *	110	2
Caverndale Farms	CF 814 3000GT	113	---	---	---	---	---	---	108 *	103 *	105	2
Seed Consultants	SC 11AQ74™	117	99	---	110 *	---	102 *	---	108 *	---	105	4
Mid-Atlantic	MA8141	114	104 *	---	---	---	---	---	---	---	104	1
Mid-Atlantic	MA5166	115	103 *	---	---	---	---	---	---	---	103	1
Hubner Seed	H6624RCSS	112	97	---	104 *	---	102 *	---	108 *	---	103	4
Pioneer	P1366AMXT	114	100	---	108 *	---	100 *	---	103 *	---	103	4
Seed Consultants	SCS 1125YHR™	112	106 *	---	99	106 *	101 *	100 *	98	106 *	102	7
Caverndale Farms	CF 888 3000GT	117	---	---	---	---	---	---	104 *	101	102	2
NK Brand	NK1573-3330	115	104 *	---	100	---	---	---	---	---	102	2
Dyna-Gro	D57VC17	117	---	---	---	---	102 *	---	---	---	102	1
Hubner Seed	H6764RCSS	114	99	---	100	---	102 *	---	105 *	---	101	4
Hubner Seed	H6890RCSS	117	102 *	---	101	---	105 *	---	97	---	101	4
NK Brand	NK1808-3111	118	101	---	105 *	98	---	101 *	---	---	101	4
Augusta	A1367	117	101	---	---	---	---	---	---	---	101	1
Masters Choice	MCT6552	115	---	---	102 *	103 *	100 *	105 *	98	98	101	6
Seed Consultants	SCS 1168YHR™	116	101	---	102	95	99	98	107 *	103	101	7
Dyna-Gro	D52VC63	112	---	---	101	---	---	---	---	---	101	1
Channel	215-98STXRIB	115	103 *	---	99	103 *	102 *	103 *	94	101	100	7
Channel	219-77STXRIB	119	100	---	106 *	94	104 *	104 *	98	97	100	7
Augusta	A5663-3000GT	113	98	---	---	---	---	---	---	103 *	100	2
Channel	210-98STXRIB	110	100	---	98	101 *	100	97	105 *	102	100	7
Progeny Ag Products	PGY 7118VT2P	118	101	---	98	101 *	101 *	97	105 *	99	100	7
Augusta	A1165	115	100	---	---	---	---	---	---	100	100	2
Seed Consultants	SC EX 110YHR™	108	102 *	---	98	---	99	---	100	---	100	4
Pioneer	P1847VYHR	113	99	---	105 *	---	101 *	---	95	---	100	4
Pioneer	P1197AMXT	111	104 *	---	99	---	99	---	97	---	100	4
Augusta	A1059	109	99	---	---	---	---	---	101	---	100	2
Hubner Seed	H6663RCSS	113	98	---	103 *	---	100 *	---	97	---	99	4
Caverndale Farms	CF 859 VIP 3111	114	---	---	---	---	---	---	99	---	99	1

Table 3. Multi-year, Multi-site Relative Milk per Ton (Quality)

Brand	Hybrid	DTM per Co. ¹	Shenandoah Valley		Northern Piedmont		Southern Piedmont		Southwest / Mountain		Multi-Site Average	Number of Obs. ²
			2019	2018 ⁴	2019	2018	2019	2018	2019	2018		
-----Relative Milk per Ton ³ -----												
Mid-Atlantic	MA9151	115	99		---	---	---	---	---	---	99	1
Hubner Seed	H6755RCSS	114	102 *		106 *	---	97	---	91	---	99	4
Hubner Seed	H6867RCSS	116	103 *		101	---	98	---	94	---	99	4
Augusta	A5262	112	100		---	---	---	92	101	102	99	4
Masters Choice	MCT6653	116	---		101	101 *	99	95	99	97	99	6
Hubner Seed	H6763RCSS	115	99		96	---	101 *	---	99	---	99	4
Mid-Atlantic	MA8128VT2P	112	99		---	---	---	---	---	---	99	1
LG Seeds	LG68C22VT2PRO	116	97		100	---	---	---	---	---	98	2
Augusta	A9967	117	99		101	---	98	---	96	---	98	4
Seed Consultants	SC EX 115YHR™	117	103 *		96	---	95	---	99	---	98	4
Channel	213-93STXRIB	113	96		102	---	97	---	97	---	98	4
LG Seeds	LG5643VT2RIB	114	98		97	---	---	---	---	---	98	2
Red Tail	RT 67T23	117	97		---	---	---	---	---	---	97	1
Seed Consultants	SCS 1188AM™	118	100		98	---	100	---	92	---	97	4
Seed Consultants	SCS 1158YHR™	115	99		89	103 *	98	100 *	96	94	97	7
Caverndale Farms	CF 753 GTCBLL	108	---		---	---	---	---	97	---	97	1
NK Brand	NK1205-3120	112	96		94	101 *	---	96	---	---	97	4
LG Seeds	LG5650VT2RIB	115	97		96	---	---	---	---	---	96	2
Caverndale Farms	CF 873 VIP 3110	116	---		---	---	---	---	96	---	96	1
Dyna-Gro	D58VC65	118	---		---	---	97	---	---	95	96	2
Dyna-Gro	D55VC80	115	---		95	---	---	---	---	---	95	1
Red Tail	RT 63T13	117	93		---	---	---	---	---	---	93	1

¹ Days to maturity provided by company; differences in maturity rating methods may exist between companies.

² Hybrids tested over more site/year combinations provide a better estimate of hybrid performance than those tested only in a single site/year location.

³ Relative Milk per Ton (quality) calculated by dividing Milk per Ton for each hybrid at each site/year by the average Milk per Ton for that site/year.

⁴ Shenandoah Valley was not harvested in 2018 due to very poor stand post-planting, most likely caused by slugs.

Numbers over 100 indicate above-average yield, 100 indicates average yield, numbers under 100 indicate below-average yield.

* Indicates numbers similar to the highest value in that column (i.e. within one LSD of the top performer.)

Shading indicates hybrids that were in the highest yielding group in at least three site years.

Table 4. Multi-year, Multi-site Relative Milk per Acre (Yield X Quality)

Brand	Hybrid	DTM per Co. ¹	Shenandoah Valley		Northern Piedmont		Southern Piedmont		Southwest / Mountain		Multi-Site Average	Number of Obs. ²
			2019	2018 ⁴	2019	2018	2019	2018	2019	2018		
-----Relative Milk per Acre ³ -----												
Mid-Atlantic	MA5166	115	130 *	---	---	---	---	---	---	---	130	1
Augusta	A1367	117	129 *	---	---	---	---	---	---	---	129	1
Caverndale Farms	CF 859 VIP 3111	114	---	---	---	---	---	119 *	---	---	119	1
Mid-Atlantic	MA8141	114	116 *	---	---	---	---	---	---	---	116	1
Dyna-Gro	D57VC17	117	---	---	---	112 *	---	---	---	---	112	1
LG Seeds	LG5643VT2RIB	114	123 *	97	---	---	---	---	---	---	110	2
Channel	219-77STXRIB	119	101	126 *	122 *	118 *	106 *	95	96	---	109	7
Augusta	A5663-3000GT	113	119 *	---	---	---	---	---	97	---	108	2
Pioneer	P1847VYHR	113	112 *	113	---	103	---	102 *	---	---	108	4
Seed Consultants	SCS 1168YHR™	116	95	106	110	103	106 *	121 *	108 *	---	107	7
NK Brand	NK1808-3111	118	108 *	116 *	96	---	107 *	---	---	---	107	4
Mid-Atlantic	MA8128VT2P	112	107 *	---	---	---	---	---	---	---	107	1
Seed Consultants	SCS 1158YHR™	115	119 *	97	114	103	93	99 *	120 *	---	106	7
NK Brand	NK1573-3330	115	116 *	97	---	---	---	---	---	---	106	2
Hubner Seed	H6764RCSS	114	129 *	99	---	90	---	106 *	---	---	106	4
Caverndale Farms	CF 888 3000GT	117	---	---	---	---	---	94	117 *	---	106	2
Seed Consultants	SC EX 115YHR™	117	130 *	92	---	99	---	102 *	---	---	106	4
Hubner Seed	H6867RCSS	116	112 *	103	---	100	---	105 *	---	---	105	4
Augusta	A7768	118	---	---	---	---	---	110 *	97	---	104	2
Hubner Seed	H6624RCSS	112	99	100	---	93	---	121 *	---	---	103	4
Progeny Ag Products	PGY 7118VT2P	118	86	101	141 *	107	92	100 *	91	---	103	7
Augusta	A9967	117	93	111	---	97	---	108 *	---	---	102	4
Seed Consultants	SCS 1188AM™	118	97	96	---	107	---	107 *	---	---	102	4
LG Seeds	LG68C22VT2PRO	116	100	103	---	---	---	---	---	---	102	2
Pioneer	P1366AMXT	114	83	119 *	---	100	---	101 *	---	---	101	4
Masters Choice	MCT6653	116	---	92	87	106	105 *	107 *	104 *	---	100	6
Augusta	A5262	112	108 *	---	---	---	92	99 *	101	---	100	4
Caverndale Farms	CF 814 3000GT	113	---	---	---	---	---	95	103	---	99	2
Dyna-Gro	D52VC63	112	---	99	---	---	---	---	---	---	99	1
Mid-Atlantic	MA9151	115	99	---	---	---	---	---	---	---	99	1

Table 4. Multi-year, Multi-site Relative Milk per Acre (Yield X Quality)

Brand	Hybrid	DTM per Co. ¹	Shenandoah Valley		Northern Piedmont		Southern Piedmont		Southwest / Mountain		Multi-Site Average	Number of Obs. ²
			2019	2018 ⁴	2019	2018	2019	2018	2019	2018		
-----Relative Milk per Acre ³ -----												
Dyna-Gro	D55VC80	115	---	99	---	---	---	---	---	99	1	
Channel	210-98STXRIB	110	105 *	90	93	93	96	111 *	100	98	7	
Seed Consultants	SC EX 110YHR™	108	93	91	---	105	---	101 *	---	98	4	
Seed Consultants	SCS 1125YHR™	112	84	106	91	92	100 *	120 *	90	98	7	
LG Seeds	LG5650VT2RIB	115	95	100	---	---	---	---	---	97	2	
Channel	215-98STXRIB	115	89	89	118	105	96	92	90	97	7	
Masters Choice	MCT6552	115	---	103	95	98	97	99 *	87	96	6	
Seed Consultants	SC 11AQ74™	117	97	97	---	88	---	101 *	---	96	4	
Hubner Seed	H6763RCSS	115	103 *	86	---	105	---	90	---	96	4	
Augusta	A1165	115	94	---	---	---	---	---	97	96	2	
Caverndale Farms	CF 753 GTCBLL	108	---	---	---	---	---	96	---	96	1	
Caverndale Farms	CF 873 VIP 3110	116	---	---	---	---	---	95	---	95	1	
Hubner Seed	H6890RCSS	117	71	97	---	106	---	105 *	---	95	4	
Hubner Seed	H6663RCSS	113	91	95	---	99	---	90	---	94	4	
Red Tail	RT 67T23	117	93	---	---	---	---	---	---	93	1	
Augusta	A1059	109	104 *	---	---	---	---	82	---	93	2	
NK Brand	NK1205-3120	112	84	89	86	---	104 *	---	---	91	4	
Hubner Seed	H6755RCSS	114	88	97	---	90	---	85	---	90	4	
Channel	213-93STXRIB	113	83	103	---	96	---	76	---	89	4	
Dyna-Gro	D58VC65	118	---	---	---	92	---	---	77	84	2	
Pioneer	P1197AMXT	111	62	98	---	94	---	76	---	83	4	
Red Tail	RT 63T13	117	68	---	---	---	---	---	---	68	1	

¹ Days to maturity provided by company; differences in maturity rating methods may exist between companies.

² Hybrids tested over more site/year combinations provide a better estimate of hybrid performance than those tested in a single site/year location.

³ Relative Milk per Acre (yield x quality) calculated by dividing Milk per Acre for each hybrid at each site/year by the average Milk per Acre for that site/year.

⁴ Shenandoah Valley was not harvested in 2018 due to very poor stand post-planting, most likely caused by slugs.

Numbers over 100 indicate above-average yield, 100 indicates average yield, numbers under 100 indicate below-average yield.

* Indicates numbers similar to the highest value in that column (i.e. within one LSD of the top performer.)

Shading indicates hybrids that were in the highest yielding group in at least three site years.

Table 5. 2019 Corn Silage Test Results at the Shenandoah Valley Site

Brand	Hybrid	DTM ¹	DM at Harvest	Yield at 35% DM	DM Yield	Crude Protein	ADF	NDF	NDF Digest.	NE _L	TDN	Milk2006	Milk2006
		--Days--	%	ton/acre	ton/acre	-----%-----				Mcal/lb	%	lb milk/ton	lb milk/acre
Seed Consultants	SC EX 115YHR™	117	43.24	27.02 *	9.46 *	7.32 *	30.34 *	52.06 *	65.46 *	0.56 *	60.38 *	2413 *	22781 *
Mid-Atlantic	MA5166	115	43.11	26.79 *	9.38 *	7.25 *	30.71 *	53.27 *	65.14 *	0.57 *	60.38 *	2419 *	22721 *
Augusta	A1367	117	44.39	27.28 *	9.55 *	7.61 *	30.92 *	52.95 *	66.81 *	0.56 *	59.99 *	2365 *	22557 *
Hubner Seed	H6764RCSS	114	45.81	27.71 *	9.70 *	7.23 *	32.04 *	54.54 *	64.20 *	0.55 *	59.17 *	2320 *	22523 *
LG Seeds	LG5643VT2RIB	114	46.09	26.80 *	9.38 *	7.46 *	33.62 *	56.85 *	66.77 *	0.54 *	59.07 *	2290 *	21564 *
Augusta	A5663-3000GT	113	47.24 *	26.14 *	9.15 *	7.31 *	32.20 *	56.36 *	64.84 *	0.55 *	58.66 *	2284 *	20889 *
Seed Consultants	SCS 1158YHR™	115	45.85	25.63 *	8.97 *	7.36 *	31.80 *	55.15 *	65.39 *	0.55 *	59.28 *	2326 *	20832 *
NK Brand	NK1573-3330	115	44.38	23.93 *	8.37 *	7.58 *	31.64 *	51.75 *	64.77 *	0.57 *	60.53 *	2431 *	20293 *
Mid-Atlantic	MA8141	114	42.99	23.87 *	8.35 *	7.30 *	30.93 *	52.73 *	65.11 *	0.57 *	60.50 *	2428 *	20284 *
Hubner Seed	H6867RCSS	116	41.07	23.13 *	8.10 *	7.46 *	30.94 *	54.43 *	62.36 *	0.57 *	59.89 *	2415 *	19675 *
Pioneer	P1847VYHR	113	43.02	24.20 *	8.47 *	7.19 *	31.64 *	55.37 *	62.21 *	0.55 *	58.69 *	2320 *	19632 *
NK Brand	NK1808-3111	118	42.13	22.90 *	8.02 *	7.02 *	35.41 *	58.38 *	66.29 *	0.56 *	59.87 *	2360 *	18961 *
Augusta	A5262	112	45.40	22.85 *	8.00 *	6.99 *	34.20 *	55.98 *	67.04 *	0.55 *	59.91 *	2347 *	18916 *
Mid-Atlantic	MA8128VT2P	112	49.83 *	23.11 *	8.09 *	6.91 *	34.65 *	57.57 *	65.79 *	0.55 *	59.18 *	2303 *	18685 *
Channel	210-98STXRIB	110	47.80 *	22.38 *	7.83 *	7.28 *	31.07 *	53.88 *	65.73 *	0.55 *	59.54 *	2340 *	18314 *
Augusta	A1059	109	50.01 *	22.52 *	7.88 *	7.32 *	31.91 *	55.26 *	65.39 *	0.55 *	59.09 *	2308 *	18222 *
Hubner Seed	H6763RCSS	115	45.69	22.26 *	7.79 *	7.82 *	30.29 *	52.99 *	64.13 *	0.55 *	58.87 *	2309 *	18047 *
Channel	219-77STXRIB	119	43.61	21.61 *	7.56 *	6.99 *	35.60 *	58.69 *	68.44 *	0.55 *	60.07 *	2341 *	17720 *
LG Seeds	LG68C22VT2PRO	118	44.43	22.10 *	7.74 *	7.17 *	33.94 *	58.22 *	66.56 *	0.54 *	58.82 *	2271 *	17596 *
Mid-Atlantic	MA9151	115	46.05	21.40 *	7.49 *	7.10 *	34.73 *	55.91 *	67.70 *	0.55 *	59.65 *	2319 *	17350 *
Hubner Seed	H6624RCSS	112	45.01	21.66 *	7.58 *	7.49 *	32.60 *	56.76 *	64.93 *	0.54 *	58.55 *	2272 *	17273 *
Seed Consultants	SC 11AQ74™	117	47.78 *	21.02 *	7.36 *	7.04 *	32.49 *	55.56 *	66.88 *	0.55 *	59.41 *	2316 *	17056 *
Seed Consultants	SCS 1188AM™	118	42.86	20.65 *	7.23 *	7.44 *	36.10 *	59.17 *	66.93 *	0.55 *	59.92 *	2347 *	16975 *
LG Seeds	LG5650VT2RIB	115	46.27	21.11 *	7.39 *	7.33 *	31.43 *	55.52 *	63.66 *	0.54 *	58.16 *	2258 *	16676 *
Seed Consultants	SCS 1168YHR™	116	49.39 *	20.14 *	7.05 *	7.77 *	30.68 *	52.50 *	66.51 *	0.55 *	59.77 *	2352 *	16606 *
Augusta	A1165	115	44.21	20.15 *	7.05 *	7.32 *	31.49 *	53.57 *	63.66 *	0.56 *	59.31 *	2347 *	16515 *
Seed Consultants	SC EX 110YHR™	108	46.51	19.60 *	6.86 *	7.57 *	30.10 *	51.39 *	66.88 *	0.56 *	60.28 *	2387 *	16373 *
Augusta	A9967	117	48.80 *	20.27 *	7.09 *	6.84 *	33.15 *	55.88 *	68.19 *	0.55 *	59.53 *	2307 *	16368 *
Red Tail	RT 67T23	117	44.53	20.42 *	7.15 *	7.29 *	33.42 *	57.32 *	64.37 *	0.54 *	58.58 *	2279 *	16326 *
Hubner Seed	H6663RCSS	113	46.06	19.87 *	6.96 *	6.91 *	31.99 *	55.56 *	65.21 *	0.54 *	58.73 *	2283 *	15870 *
Channel	215-98STXRIB	115	43.70	18.56 *	6.50 *	7.18 *	32.39 *	54.11 *	63.65 *	0.56 *	59.93 *	2397 *	15597 *
Hubner Seed	H6755RCSS	114	43.97	18.67 *	6.54 *	7.17 *	32.31 *	55.02 *	64.75 *	0.56 *	59.84 *	2377 *	15479 *
Progeny Ag Products	PGY 7118VT2P	118	42.15	18.32 *	6.41 *	7.19 *	33.52 *	56.94 *	63.91 *	0.56 *	59.51 *	2362 *	15122 *
Seed Consultants	SCS 1125YHR™	112	41.16	17.03 *	5.96 *	7.79 *	33.95 *	56.86 *	67.63 *	0.57 *	61.61 *	2484 *	14797 *
NK Brand	NK1205-3120	112	47.17 *	18.73 *	6.56 *	7.89 *	29.10 *	51.49 *	62.84 *	0.54 *	58.01 *	2254 *	14714 *
Pioneer	P1366AMXT	114	43.00	17.78 *	6.22 *	7.86 *	31.50 *	55.12 *	65.13 *	0.55 *	59.31 *	2330 *	14483 *
Channel	213-93STXRIB	113	45.24	18.33 *	6.42 *	7.45 *	32.76 *	57.21 *	64.42 *	0.54 *	58.10 *	2244 *	14465 *
Hubner Seed	H6890RCSS	117	42.15	14.80 *	5.18 *	7.21 *	33.56 *	55.70 *	63.35 *	0.56 *	59.75 *	2391 *	12434 *
Red Tail	RT 63T13	117	46.83	15.54 *	5.44 *	6.87 *	35.92 *	61.10 *	65.39 *	0.53 *	57.31 *	2168 *	11860 *
Pioneer	P1197AMXT	111	40.88	12.66 *	4.43 *	7.66 *	35.23 *	57.84 *	68.23 *	0.57 *	61.14 *	2437 *	10822 *
	Site Average		45.00	21.47	7.52	7.32	32.56	55.42	65.42	0.55	59.46	2337	17584
	LSD (0.10)		2.87	5.66	1.98	0.68	5.10	6.52	2.77	0.02	1.49	111	4783
	C.V.		4.96	20.56	20.56	7.18	12.17	9.14	3.29	2.41	1.94	4	21

¹Days to maturity provided by company; differences in maturity rating methods may exist between companies.

* Indicates numbers not significantly different from the highest (or lowest for ADF and NDF) value in that column, i.e. within one LSD of the top performer.

Hybrids are listed in descending order of lb milk/acre.

Table 6. 2019 Corn Silage Test Results at the Northern Piedmont Site

Brand	Hybrid	DTM ¹	DM at Harvest	Yield at 35% DM		DM Yield	Crude Protein	ADF	NDF	NDF Digest.	NE _L	TDN	Milk2006	Milk2006
		--Days--	%	ton/acre	ton/acre						-----%-----	Mcal/lb	%	lb milk/ton
Channel	219-77STXRIB	119	42.33	40.85 *	14.30 *	7.37 *	29.77 *	53.82 *	64.03 *	0.58 *	63.72 *	2577 *	36698 *	
Pioneer	P1366AMXT	114	41.04	37.95 *	13.28 *	7.64 *	29.99 *	53.45 *	63.42 *	0.59 *	64.22 *	2626 *	34837 *	
NK Brand	NK1808-3111	118	43.23 *	38.08 *	13.33 *	7.35 *	30.24 *	53.87 *	62.99 *	0.58 *	63.15 *	2546 *	33977 *	
Pioneer	P1847VYHR	113	41.24	36.82 *	12.89	7.42 *	29.43 *	52.80 *	59.99	0.58 *	62.65 *	2551 *	32990	
Augusta	A9967	117	41.85	37.76 *	13.22 *	6.77	32.54	56.09	60.90	0.57	61.65	2452	32361	
Seed Consultants	SCS 1168YHR™	116	43.17 *	35.98	12.59	6.93	31.43 *	55.06 *	63.09 *	0.57	62.28 *	2470	31095	
Seed Consultants	SCS 1125YHR™	112	42.17	36.67	12.83	8.07 *	29.07 *	50.55 *	58.18	0.56	60.64	2413	30920	
LG Seeds	LG68C22VT2PRO	118	42.77	35.45	12.41	6.76	32.20	56.24	61.21 *	0.56	61.44	2429	30130	
Masters Choice	MCT6552	115	42.49	34.71	12.15	7.61 *	32.12	55.93	63.15 *	0.57 *	62.47 *	2483 *	30073	
Hubner Seed	H6867RCSS	116	42.32	35.02	12.26	7.22	31.56 *	56.22	61.90 *	0.57	61.84	2453	30041	
Channel	213-93STXRIB	113	42.37	34.59	12.11	7.40 *	29.83 *	54.27 *	59.38	0.57 *	61.59	2473	29937	
Progeny Ag Products	PGY 7118VT2P	118	41.61	35.33	12.36	7.29 *	30.94 *	55.50 *	57.70	0.56	60.04	2374	29369	
Hubner Seed	H6624RCSS	112	41.55	33.20	11.62	7.35 *	30.64 *	54.47 *	61.46 *	0.58 *	62.63 *	2526 *	29292	
LG Seeds	LG5650VT2RIB	115	42.70	35.66	12.48	7.03	33.24	58.62	60.24	0.55	60.12	2336	29147	
Hubner Seed	H6764RCSS	114	42.41	34.34	12.02	7.50 *	30.42 *	53.73 *	59.98	0.56	61.12	2422	29025	
Dyna-Gro	D52VC63	112	42.17	33.80	11.83	6.73	33.48	58.78	61.81 *	0.56	61.82	2445	28925	
Dyna-Gro	D55VC80	115	43.78 *	35.48	12.42	7.62 *	28.22 *	51.72 *	57.47	0.55	59.32	2318	28799	
Pioneer	P1197AMXT	111	40.92	34.30	12.00	7.76 *	29.79 *	53.94 *	58.05	0.56	60.57	2412	28685	
Seed Consultants	SCS 1158YHR™	115	43.96 *	37.97 *	13.29 *	7.70 *	29.41 *	53.60 *	55.50	0.53	56.99	2154	28455	
Seed Consultants	SC 11A074™	117	39.97	30.29	10.60	7.53 *	30.62 *	54.90 *	63.39 *	0.60 *	64.98 *	2685 *	28383	
NK Brand	NK1573-3330	115	41.33	33.06	11.57	7.15	33.35	56.77	61.42 *	0.56	61.69	2439	28265	
LG Seeds	LG5643VT2RIB	114	43.17 *	34.06	11.92	7.30 *	31.37 *	55.14 *	59.54	0.55	60.33	2367	28264	
Hubner Seed	H6890RCSS	117	42.00	32.69	11.44	7.33 *	30.42 *	55.44 *	60.45	0.57	61.68	2461	28210	
Hubner Seed	H6755RCSS	114	41.40	31.28	10.95	7.57 *	28.52 *	52.87 *	61.40 *	0.59 *	63.19 *	2576 *	28183	
Seed Consultants	SCS 1188AM™	118	45.00 *	33.88	11.86	7.42 *	30.08 *	52.61 *	60.48	0.56	60.57	2377	28056	
Hubner Seed	H6663RCSS	113	40.74	31.69	11.09	7.36 *	30.70 *	54.65 *	57.31	0.58 *	61.56	2502 *	27726	
Seed Consultants	SC EX 115YHR™	117	45.44 *	33.34	11.67	7.40 *	28.63 *	52.30 *	59.04	0.55	59.69	2328	26902	
Masters Choice	MCT6653	116	42.92	31.20	10.92	7.46 *	31.36 *	54.64 *	62.69 *	0.56	61.89	2445	26745	
Seed Consultants	SC EX 110YHR™	108	43.11 *	31.71	11.10	7.08	34.32	58.78	64.46 *	0.55	61.76	2392	26638	
Channel	210-98STXRIB	110	40.70	31.66	11.08	7.87 *	29.00 *	53.75 *	58.09	0.56	60.32	2389	26425	
NK Brand	NK1205-3120	112	43.43 *	32.43	11.35	7.74 *	30.25 *	54.59 *	59.00	0.54	59.31	2285	26050	
Channel	215-98STXRIB	115	39.06	31.20	10.92	7.93 *	30.49 *	56.99	57.30	0.56	60.30	2401	26020	
Hubner Seed	H6763RCSS	115	45.47 *	30.41	10.64	7.55 *	28.46 *	52.12 *	58.24	0.55	59.68	2336	25064	
Site Average			42.36	34.33	12.02	7.40	30.66	54.67	60.40	0.56	61.37	2438	29263	
LSD (0.10)			2.38	3.98	1.39	0.84	3.71	5.29	3.56	0.03	2.98	212	3683	
C.V.			4.66	9.62	9.62	9.38	10.04	8.02	4.89	4.58	4.04	7	10	

¹Days to maturity provided by company; differences in maturity rating methods may exist between companies.

* Indicates numbers not significantly different from the highest (or lowest for ADF and NDF) value in that column, i.e. within one LSD of the top performer. Hybrids are listed in descending order of lb milk/acre.

Table 7. Two-Year Corn Silage Test Results (2018 & 2019) at the Northern Piedmont Site

Brand	Hybrid	DTM ¹	DM at Harvest	Yield at 35% DM		DM Yield	Crude Protein	ADF	NDF	NDF Digest.	NE _L	TDN	Milk2006	Milk2006
		--Days--	%	ton/acre	ton/acre		-----%-----				Mcal/lb	%	lb milk/ton	lb milk/acre
Channel	219-77STXRIB	119	41.95 *	32.68 *	11.44 *	7.35 *	29.94 *	52.97	62.14 *	0.58 *	62.22 *	2514 *	28843 *	
Progeny Ag Products	PGY 7118VT2P	118	40.53 *	31.63 *	11.07 *	7.57 *	29.76 *	53.65	58.45	0.57 *	61.01	2461 *	27636 *	
NK Brand	NK1808-3111	118	41.75 *	29.68	10.39	7.51 *	29.59 *	52.78	61.97 *	0.58 *	62.73 *	2553 *	26524 *	
Seed Consultants	SCS 1168YHR™	116	41.26 *	28.94	10.13	6.75	31.76	55.16	62.45 *	0.57 *	61.77 *	2472 *	25022	
Channel	215-98STXRIB	115	38.83	27.51	9.63	7.91 *	30.22 *	56.15	58.34	0.57 *	61.03	2458 *	24865	
Seed Consultants	SCS 1158YHR™	115	42.18 *	30.58 *	10.70 *	7.99 *	28.40 *	50.59 *	57.25	0.56	59.85	2386	24660	
Seed Consultants	SCS 1125YHR™	112	40.66 *	26.08	9.13	7.94 *	28.31 *	48.66 *	59.09	0.59 *	62.34 *	2564 *	24374	
Masters Choice	MCT6552	115	41.02 *	27.24	9.53	7.70 *	30.91	53.23	63.23 *	0.58 *	63.18 *	2571 *	24160	
Channel	210-98STXRIB	110	40.89 *	25.48	8.92	7.85 *	28.61 *	51.80 *	59.41	0.58 *	61.52 *	2493 *	21941	
Masters Choice	MCT6653	116	41.47 *	24.85	8.70	7.56 *	29.88 *	52.99	62.41 *	0.58 *	62.46 *	2524 *	21716	
	Site Average		41.05	28.47	9.96	7.61	29.74	52.80	60.47	0.58	61.81	2500	24974	
	LSD (0.10)		1.89	2.87	1.00	0.66	2.48	3.46	2.66	0.02	2.05	141	2600	
	C.V.		5.14	11.32	11.32	9.44	8.98	7.08	4.73	3.84	3.57	6	11	

¹Days to maturity provided by company; differences in maturity rating methods may exist between companies.

* Indicates numbers not significantly different from the highest (or lowest for ADF and NDF) value in that column, i.e. within one LSD of the top performer.

Hybrids are listed in descending order of lb milk/acre.

Table 8. Three-Year Corn Silage Test Results (2017, 2018 & 2019) at the Northern Piedmont Site

Brand	Hybrid	DTM ¹	DM at Harvest	Yield at 35% DM		DM Yield	Crude Protein	ADF	NDF	NDF Digest.	NE _L	TDN	Milk2006	Milk2006
		--Days--	%	ton/acre	ton/acre		-----%-----				Mcal/lb	%	lb milk/ton	lb milk/acre
NK Brand	NK1808-3111	118	39.46 *	27.19 *	9.52 *	7.16 *	30.21 *	53.02	62.58 *	0.60 *	63.88 *	2658 *	25098 *	
Seed Consultants	SCS 1158YHR™	115	39.86 *	26.87 *	9.40 *	7.48 *	29.29 *	51.43 *	59.17	0.59	61.82	2542	23014 *	
Progeny Ag Products	PGY 7118VT2P	118	38.28	25.89 *	9.06 *	6.95 *	30.84 *	54.27	60.11	0.59	62.76	2606	22881 *	
Seed Consultants	SCS 1168YHR™	116	38.71	24.89	8.71	6.42	32.62	55.80	62.78 *	0.59	62.84	2574	22101	
Seed Consultants	SCS 1125YHR™	112	38.22	22.96	8.03	7.49 *	29.10 *	50.08 *	61.23 *	0.61 *	64.37 *	2722 *	21907	
Channel	215-98STXRIB	115	37.66	23.97	8.39	7.45 *	30.03 *	54.33	60.39	0.60 *	63.24 *	2640 *	21755	
Masters Choice	MCT6653	116	38.90 *	21.70	7.60	7.19 *	30.52 *	53.31	62.63 *	0.60	63.64 *	2640 *	19674	
Site Average			38.73	24.78	8.67	7.16	30.37	53.18	61.27	0.60	63.22	2626	22347	
LSD (0.10)			1.10	2.20	0.77	0.56	2.07	2.76	1.77	0.01	1.38	94	2260	
C.V.			992.50	12.50	12.50	10.65	9.30	7.08	3.93	3.11	2.98	5	14	

¹Days to maturity provided by company; differences in maturity rating methods may exist between companies.

* Indicates numbers not significantly different from the highest (or lowest for ADF and NDF) value in that column, i.e. within one LSD of the top performer.

Hybrids are listed in descending order of lb milk/acre.

Table 9. 2019 Corn Silage Test Results at the Southern Piedmont Site

Brand	Hybrid	DTM ¹	DM at Harvest	Yield at 35% DM		DM Yield	Crude Protein	ADF	NDF	NDF Digest.	NE _L	TDN	Milk2006	Milk2006								
		--Days--	%	ton/acre	ton/acre	ton/acre	ton/acre	ton/acre	ton/acre	ton/acre	Mcal/lb	%	lb milk/ton	lb milk/acre								
Channel	219-77STXRIB	119	45.70	20.03	*	7.01	*	8.46	*	30.02	*	51.18	*	60.91	0.56	*	61.20	*	2424	*	16944	*
Dyna-Gro	D57VC17	117	56.69	*	19.21	*	6.72	*	7.04	35.56	60.22	64.54	*	0.55	*	61.73	*	2378	*	16023	*	
Seed Consultants	SCS 1188AM™	118	47.58	18.93	*	6.63	*	7.91	*	32.99	*	56.85	*	62.55	0.55	60.47	*	2328	*	15418	*	
Progeny Ag Products	PGY 7118VT2P	118	43.39	18.60	*	6.51	*	7.77	34.32	58.24	60.82	0.55	*	60.54	*	2358	*	15346				
Masters Choice	MCT6653	116	45.24	18.77	*	6.57	*	7.92	*	35.36	59.68	61.10	0.55	60.14	2320	15266						
Hubner Seed	H6890RCSS	117	45.81	17.75	6.21	7.86	*	32.46	*	55.52	*	61.82	0.57	*	61.87	*	2453	*	15182			
Seed Consultants	SC EX 110YHR™	108	49.15	18.64	*	6.52	*	7.87	*	34.66	58.11	64.77	*	0.54	60.85	*	2317	15117				
Hubner Seed	H6763RCSS	115	49.50	18.30	6.40	7.57	*	33.36	*	56.90	*	61.74	0.55	*	60.71	*	2355	*	15077			
Channel	215-98STXRIB	115	47.14	18.18	6.36	7.92	*	31.48	*	53.71	*	59.82	0.56	*	60.49	*	2374	*	15054			
Seed Consultants	SCS 1158YHR™	115	48.27	18.40	*	6.44	*	7.40	36.49	61.57	63.75	*	0.54	60.51	*	2297	14829					
Seed Consultants	SCS 1168YHR™	116	44.74	18.35	6.42	7.27	35.67	60.15	62.41	0.54	60.28	*	0.54	60.28	*	2307	14797					
Pioneer	P1847VYHR	113	46.49	17.95	6.28	7.69	35.61	61.63	64.30	*	0.55	*	61.35	*	2354	*	14769					
Pioneer	P1366AMXT	114	43.78	17.54	6.14	8.35	*	34.69	59.40	62.90	*	0.55	*	60.79	*	2340	*	14410				
Hubner Seed	H6867RCSS	116	45.78	17.90	6.26	6.93	35.65	60.18	61.16	0.54	59.77	2288	14360									
Hubner Seed	H6663RCSS	113	48.34	17.45	6.11	7.26	35.42	60.87	63.19	*	0.55	*	60.93	*	2340	*	14278					
Seed Consultants	SC EX 115YHR™	117	45.40	18.26	6.39	7.51	37.09	62.20	62.46	0.53	59.24	2217	14187									
Masters Choice	MCT6552	115	49.63	17.21	6.02	7.89	*	33.67	*	58.01	62.49	0.55	*	60.60	*	2335	*	14070				
Augusta	A9967	117	50.14	17.34	6.07	6.93	37.93	64.16	65.21	*	0.54	60.89	*	2282	13872							
Channel	213-93STXRIB	113	49.92	17.26	6.04	7.45	35.37	61.03	64.03	*	0.54	60.24	*	2271	13732							
Pioneer	P1197AMXT	111	46.11	16.69	5.84	7.89	*	34.86	59.32	63.06	*	0.54	60.46	*	2310	13458						
Hubner Seed	H6624RCSS	112	47.91	16.06	5.62	7.55	33.39	*	58.70	63.06	*	0.55	*	61.26	*	2378	*	13359				
Channel	210-98STXRIB	110	46.23	16.36	5.72	7.03	38.22	65.50	65.82	*	0.54	61.52	*	2325	13349							
Seed Consultants	SCS 1125YHR™	112	46.98	15.89	5.56	8.14	*	33.79	*	57.53	*	62.60	*	0.55	*	61.11	*	2369	*	13180		
Dyna-Gro	D58VC65	118	45.51	16.53	5.79	7.60	35.09	59.48	60.23	0.54	59.41	2276	13139									
Hubner Seed	H6764RCSS	114	43.60	15.51	5.43	7.79	*	33.43	*	56.97	*	61.85	0.56	*	61.04	*	2385	*	12953			
Hubner Seed	H6755RCSS	114	44.33	16.16	5.66	7.35	36.11	61.19	61.20	0.54	59.63	2272	12860									
Seed Consultants	SC 11AQ74™	117	42.70	15.27	5.35	7.99	*	35.08	60.27	63.53	*	0.55	*	61.49	*	2383	*	12683				
Site Average			46.89	17.58	6.15	7.64	34.73	59.21	62.64	0.55	60.69	2335	14360									
LSD (0.10)			3.63	1.68	0.59	0.69	4.16	6.41	3.23	0.02	1.71	123	1399									
C.V.			6.39	7.89	7.89	7.39	9.87	8.91	4.25	2.90	2.32	4	8									

¹Days to maturity provided by company; differences in maturity rating methods may exist between companies.

* Indicates numbers not significantly different from the highest (or lowest for ADF and NDF) value in that column, i.e. within one LSD of the top performer.

Hybrids are listed in descending order of lb milk/acre.

Table 10. Two-Year Corn Silage Test Results (2018 & 2019) at the Southern Piedmont Site

Brand	Hybrid	DTM ¹	DM at Harvest	Yield at 35% DM		DM Yield	Crude Protein	ADF	NDF	NDF Digest.	NE _L	TDN	Milk2006	Milk2006
		--Days--	%	ton/acre	ton/acre	ton/acre	-----%	Mcal/lb	%	lb milk/ton	lb milk/acre			
Channel	219-77STXRIB	119	40.87	20.12 *	7.04 *	7.96 *	31.34 *	51.77 *	60.52	0.59 *	63.24 *	2614 *	18336 *	
Masters Choice	MCT6653	116	42.33	20.35 *	7.12 *	7.44	33.67	56.44	59.88	0.57	61.06	2438	17436 *	
Seed Consultants	SCS 1168YHR™	116	41.13	19.88 *	6.96 *	7.00	34.37	57.65	61.47 *	0.57 *	61.89 *	2481 *	17304 *	
Channel	215-98STXRIB	115	42.85	18.36	6.42	7.44 *	31.08 *	51.93 *	59.44	0.59 *	62.56 *	2570 *	16459	
Progeny Ag Products	PGY 7118VT2P	118	40.95	18.69	6.54	6.96	33.84	56.35	59.91	0.58 *	61.72 *	2492 *	16280	
Seed Consultants	SCS 1158YHR™	115	43.47	18.40	6.44	7.24	33.44	54.71 *	61.39 *	0.58 *	62.37 *	2521 *	16210	
Masters Choice	MCT6552	115	43.68	17.70	6.19	7.75 *	31.98 *	52.54 *	60.96 *	0.59 *	63.09 *	2586 *	16066	
Channel	210-98STXRIB	110	43.84	17.94	6.28	6.83	34.51	57.82	62.59 *	0.57	62.13 *	2466	15582	
Seed Consultants	SCS 1125YHR™	112	43.38	17.60	6.16	7.77 *	32.19 *	54.84 *	61.29 *	0.58 *	62.25 *	2506 *	15534	
Site Average			42.50	18.78	6.57	7.38	32.94	54.89	60.83	0.58	62.26	2519	16578	
LSD (0.10)			2.24	1.49	0.52	0.54	2.20	3.79	1.65	0.02	1.82	141	1227	
C.V.			6.08	9.12	9.12	8.51	7.67	7.94	3.12	4.30	3.36	6	9	

¹Days to maturity provided by company; differences in maturity rating methods may exist between companies.

* Indicates numbers not significantly different from the highest (or lowest for ADF and NDF) value in that column, i.e. within one LSD of the top performer.

Hybrids are listed in descending order of lb milk/acre.

Table 11. Three-Year Corn Silage Test Results (2017, 2018 & 2019) at the Southern Piedmont Site

Brand	Hybrid	DTM ¹	DM at Harvest	Yield at 35% DM		DM Yield	Crude Protein	ADF	NDF	NDF Digest.	NE _L	TDN	Milk2006	Milk2006
		--Days--	%	ton/acre	ton/acre	ton/acre	-----%	Mcal/lb	%	lb milk/ton	lb milk/acre			
Seed Consultants	SCS 1168YHR™	116	41.11	19.16 *	6.71 *	7.15	33.93	57.42	62.59 *	0.56 *	60.93 *	2416 *	16269 *	
Masters Choice	MCT6653	116	42.37 *	19.30 *	6.75 *	7.33 *	33.62	56.95	61.39 *	0.56 *	60.16 *	2372 *	16115 *	
Progeny Ag Products	PGY 7118VT2P	118	41.45	18.72 *	6.55 *	6.84	34.75	57.55	60.77	0.56 *	60.40 *	2396 *	15677 *	
Channel	215-98STXRIB	115	42.62 *	18.10	6.33	7.41 *	31.67 *	53.12 *	60.44	0.57 *	61.18 *	2470 *	15640 *	
Seed Consultants	SCS 1158YHR™	115	43.90 *	18.12	6.34	7.18	33.32 *	55.45 *	62.35 *	0.56 *	60.66 *	2400 *	15227	
Seed Consultants	SCS 1125YHR™	112	43.39 *	18.13	6.35	7.70 *	32.92 *	55.90 *	61.84 *	0.56 *	60.62 *	2394 *	15198	
Site Average			42.47	18.59	6.51	7.27	33.37	56.06	61.56	0.56	60.66	2408	15687	
LSD (0.10)			2.08	1.14	0.40	0.43	1.81	2.86	1.52	0.02	1.45	111	993	
C.V.			6.90	8.67	8.67	8.34	7.65	7.20	3.48	4.28	3.38	7	9	

¹Days to maturity provided by company; differences in maturity rating methods may exist between companies.

* Indicates numbers not significantly different from the highest (or lowest for ADF and NDF) value in that column, i.e. within one LSD of the top performer.

Hybrids are listed in descending order of lb milk/acre.

Table 12. 2019 Corn Silage Test Results at the Southwest Virginia Site

Brand	Hybrid	DTM ¹	DM at Harvest	Yield at 35% DM	DM Yield	Crude Protein	ADF	NDF	NDF Digest.	NE _L	TDN	Milk2006	Milk2006
		--Days--	%	ton/acre	ton/acre	-----%-----				Mcal/lb	%	lb milk/ton	lb milk/acre
Seed Consultants	SCS 1168YHR™	116	42.46	36.62	12.82	7.23	30.59	54.32	67.19	0.57	62.31	2500	31967
Hubner Seed	H6624RCSS	112	44.23	36.43	12.75	8.74	25.84	48.47	64.26	0.58	62.13	2531	31958
Seed Consultants	SCS 1125YHR™	112	47.61	39.06	13.67	8.19	26.59	48.58	60.71	0.55	58.74	2295	31562
Caverndale Farms	CF 859 VIP 3111	114	47.43	38.39	13.44	7.81	29.09	52.41	66.41	0.55	59.94	2319	31339
Channel	210-98STXRIB	110	42.67	34.44	12.05	8.05	27.21	49.93	63.54	0.57	60.98	2443	29337
Augusta	A7768	118	39.71	31.16	10.91	8.24	27.61	50.89	67.83	0.60	64.20	2653	29082
Augusta	A9967	117	48.89	36.03	12.61	7.41	27.47	50.81	60.59	0.54	58.13	2251	28451
Seed Consultants	SCS 1188AM™	118	46.34	37.26	13.04	7.42	30.60	53.69	60.48	0.52	56.78	2142	28226
Masters Choice	MCT6653	116	45.66	34.62	12.12	7.59	28.47	51.13	63.08	0.55	59.35	2317	28073
Hubner Seed	H6764RCSS	114	43.99	32.47	11.37	8.68	26.02	48.34	64.71	0.57	61.13	2445	27847
Hubner Seed	H6890RCSS	117	47.17	35.22	12.33	7.76	27.39	50.57	60.94	0.54	58.27	2258	27791
Hubner Seed	H6867RCSS	116	43.61	35.74	12.51	6.73	31.20	55.60	59.19	0.53	57.10	2191	27637
Pioneer	P1847VYHR	113	47.06	36.02	12.61	8.45	26.74	49.68	58.99	0.54	57.40	2210	26980
Seed Consultants	SC EX 115YHR™	117	43.48	32.99	11.55	7.82	29.35	52.48	62.43	0.55	59.17	2313	26829
Seed Consultants	SC 11AQ74™	117	43.11	30.28	10.60	8.02	27.16	50.60	64.03	0.58	61.99	2520	26712
Seed Consultants	SC EX 110YHR™	108	48.26	32.68	11.44	7.56	30.20	53.67	66.56	0.55	60.16	2333	26689
Pioneer	P1366AMXT	114	42.16	31.60	11.06	7.71	29.45	52.63	63.51	0.56	60.36	2397	26624
Progeny Ag Products	PGY 7118VT2P	118	40.95	30.86	10.80	7.33	30.22	53.31	60.46	0.57	60.53	2442	26346
Augusta	A5262	112	45.20	31.59	11.06	7.58	27.27	50.03	60.55	0.56	59.60	2370	26183
Masters Choice	MCT6552	115	46.26	32.46	11.36	8.84	25.82	47.95	60.71	0.55	58.56	2284	26175
Seed Consultants	SCS 1158YHR™	115	43.86	32.93	11.53	7.98	28.50	51.72	61.53	0.54	58.27	2251	26045
Caverndale Farms	CF 753 GTCBLL	108	49.42	31.79	11.13	7.87	28.73	51.44	61.77	0.54	58.57	2268	25172
Caverndale Farms	CF 873 VIP 3110	116	41.37	32.47	11.37	7.16	30.33	55.16	61.12	0.54	58.14	2250	25077
Channel	219-77STXRIB	119	42.51	31.07	10.88	6.83	29.81	52.74	60.59	0.55	58.69	2297	25059
Caverndale Farms	CF 814 3000GT	113	42.78	28.42	9.95	7.36	27.38	50.16	63.96	0.58	61.95	2518	24939
Caverndale Farms	CF 888 3000GT	117	43.46	29.36	10.28	7.14	29.83	53.93	65.04	0.56	60.96	2422	24872
Channel	215-98STXRIB	115	41.63	30.72	10.75	7.60	28.77	53.13	56.39	0.54	56.71	2191	24138
Hubner Seed	H6763RCSS	115	47.59	29.25	10.24	7.66	27.85	51.31	61.13	0.55	58.94	2304	23718
Hubner Seed	H6663RCSS	113	43.17	30.14	10.55	8.35	27.31	50.32	60.99	0.54	58.39	2266	23691
Hubner Seed	H6755RCSS	114	44.47	30.08	10.53	8.07	27.65	51.72	58.23	0.52	56.31	2133	22339
Augusta	A1059	109	47.39	26.29	9.20	8.14	27.71	51.08	62.53	0.55	59.70	2353	21645
Channel	213-93STXRIB	113	45.58	25.51	8.93	8.40	26.29	48.69	61.50	0.54	58.38	2260	20129
Pioneer	P1197AMXT	111	41.89	26.38	9.23	8.60	28.35	52.08	60.24	0.54	58.12	2255	20115
	Site Average		44.59	32.43	11.35	7.83	28.27	51.47	62.16	0.55	59.39	2333	26447
	LSD (0.10)		3.30	7.52	2.63	1.15	3.36	4.24	5.25	0.04	3.91	267	6537
	C.V.		5.69	17.91	17.91	11.23	9.13	6.32	6.48	5.30	5.05	9	19

¹Days to maturity provided by company; differences in maturity rating methods may exist between companies.

* Indicates numbers not significantly different from the highest (or lowest for ADF and NDF) value in that column, i.e. within one LSD of the top performer.

Hybrids are listed in descending order of lb milk/acre.

Table 13. Two-Year Corn Silage Test Results (2018 & 2019) at the Southwest Virginia Site

Brand	Hybrid	DTM ¹	DM at Harvest		Yield at 35% DM		DM Yield		Crude Protein		ADF		NDF		NDF Digest.		NE _L	TDN	Milk2006	Milk2006		
		--Days--	%	ton/acre	ton/acre	ton/acre	ton/acre	ton/acre	ton/acre	ton/acre	ton/acre	ton/acre	ton/acre	ton/acre	ton/acre	ton/acre	ton/acre	Mcal/lb	%	lb milk/ton	lb milk/acre	
Seed Consultants	SCS 1168YHR™	116	37.93	*	36.90	*	12.92	*	7.77	29.21	*	52.30	*	64.59	*	0.61	*	64.53	*	2710	35023	*
Seed Consultants	SCS 1158YHR™	115	41.75	*	38.09	*	13.33	*	7.98	27.91	*	50.31	*	60.47	*	0.57	*	60.20	*	2413	32656	*
Masters Choice	MCT6653	116	40.89	*	36.52	*	12.78	*	7.85	28.37	*	50.96	*	62.31	*	0.58	*	62.08	*	2541	32616	*
Channel	210-98STXRIB	110	38.85	*	34.43	*	12.05	*	8.01	27.55	*	50.18	*	62.55	*	0.60	*	63.45	*	2650	31881	*
Caverndale Farms	CF 888 3000GT	117	40.63	*	34.47	*	12.06	*	7.59	28.47	*	51.69	*	63.32	*	0.59	*	62.87	*	2593	31615	*
Seed Consultants	SCS 1125YHR™	112	39.50	*	34.02	*	11.91	*	8.63	26.65	*	48.82	*	61.85	*	0.60	*	63.61	*	2671	31340	*
Caverndale Farms	CF 814 3000GT	113	39.22	*	32.50	*	11.38	*	7.65	27.32	*	49.06	*	62.20	*	0.61	*	64.34	*	2726	31146	*
Augusta	A7768	118	36.35	*	31.57	*	11.05	*	8.32	27.75	*	50.67	*	65.32	*	0.62	*	65.67	*	2798	31018	*
Augusta	A5262	112	40.09	*	33.32	*	11.66	*	7.60	27.92	*	50.21	*	60.17	*	0.60	*	62.54	*	2607	30559	*
Channel	219-77STXRIB	119	39.66	*	33.08	*	11.58	*	7.47	28.91	*	51.52	*	60.95	*	0.58	*	61.42	*	2507	29209	*
Progeny Ag Products	PGY 7118VT2P	118	38.08	*	31.66	*	11.08	*	7.56	29.40	*	52.11	*	60.39	*	0.60	*	62.54	*	2602	28949	*
Masters Choice	MCT6552	115	41.77	*	31.82	*	11.14	*	8.38	26.81	*	48.34	*	60.19	*	0.58	*	61.39	*	2513	28056	*
Channel	215-98STXRIB	115	38.96	*	31.01	*	10.85	*	7.94	27.88	*	51.28	*	58.30	*	0.58	*	61.04	*	2510	27645	*
Site Average			39.51		33.80		11.83		7.90	28.01		50.57		61.74		0.59		62.74		2603	30901	
LSD (0.10)			2.16		4.49		1.57		0.63	1.70		2.25		2.63		0.02		1.69		115	4599	
C.V.			6.04		14.64		14.64		8.76	6.67		4.89		4.70		3.08		2.97		5	16	

¹Days to maturity provided by company; differences in maturity rating methods may exist between companies.

* Indicates numbers not significantly different from the highest (or lowest for ADF and NDF) value in that column, i.e. within one LSD of the top performer. Hybrids are listed in descending order of lb milk/acre.

Table 14. Three-Year Corn Silage Test Results (2017, 2018 & 2019) at the Southwest Virginia Site

Brand	Hybrid	DTM ¹	DM at Harvest		Yield at 35% DM		DM Yield		Crude Protein		ADF		NDF		NDF Digest.		NE _L	TDN	Milk2006	Milk2006
		--Days--	%	ton/acre	ton/acre	ton/acre	ton/acre	ton/acre	ton/acre	ton/acre	ton/acre	ton/acre	ton/acre	ton/acre	ton/acre	ton/acre	ton/acre	Mcal/lb	%	lb milk/ton
Seed Consultants	SCS 1168YHR™	116	36.60	35.18 *	12.31 *	8.01	28.39	51.36	64.79 *	0.63 *	65.99 *	2831 *	34703 *							
Augusta	A7768	118	35.33	32.53	11.39	8.56 *	27.25 *	50.06	64.84 *	0.63 *	66.52 *	2876 *	32911 *							
Masters Choice	MCT6653	116	38.75 *	34.78 *	12.17 *	8.06	27.73	50.46	62.30	0.61	63.70	2678	32547 *							
Seed Consultants	SCS 1158YHR™	115	39.97 *	35.97 *	12.59 *	8.06	27.30 *	49.34 *	60.71	0.59	62.21	2576	32477 *							
Augusta	A5262	112	38.69 *	32.93 *	11.53 *	8.01	27.23 *	49.17 *	60.57	0.61	63.97	2721	31429 *							
Seed Consultants	SCS 1125YHR™	112	37.97	32.14	11.25	8.73 *	26.24 *	47.84 *	61.93	0.62 *	65.18	2800 *	30993							
Progeny Ag Products	PGY 7118VT2P	118	36.66	31.67	11.08	7.72	28.80	51.71	61.10	0.61	64.02	2717	30200							
Channel	215-98STXRIB	115	37.09	30.31	10.61	8.14	27.30 *	50.13	59.56	0.61	63.57	2702	28831							
Site Average			37.63	33.19	11.62	8.16	27.53	50.01	61.97	0.61	64.40	2738	31761							
LSD (0.10)			1.66	3.28	1.15	0.51	1.36	1.94	1.87	0.01	1.24	84	3606							
C.V.			5.97	13.40	13.40	8.39	6.67	5.26	4.09	2.67	2.60	4	15							

¹Days to maturity provided by company; differences in maturity rating methods may exist between companies.

* Indicates numbers not significantly different from the highest (or lowest for ADF and NDF) value in that column, i.e. within one LSD of the top performer. Hybrids are listed in descending order of lb milk/acre.

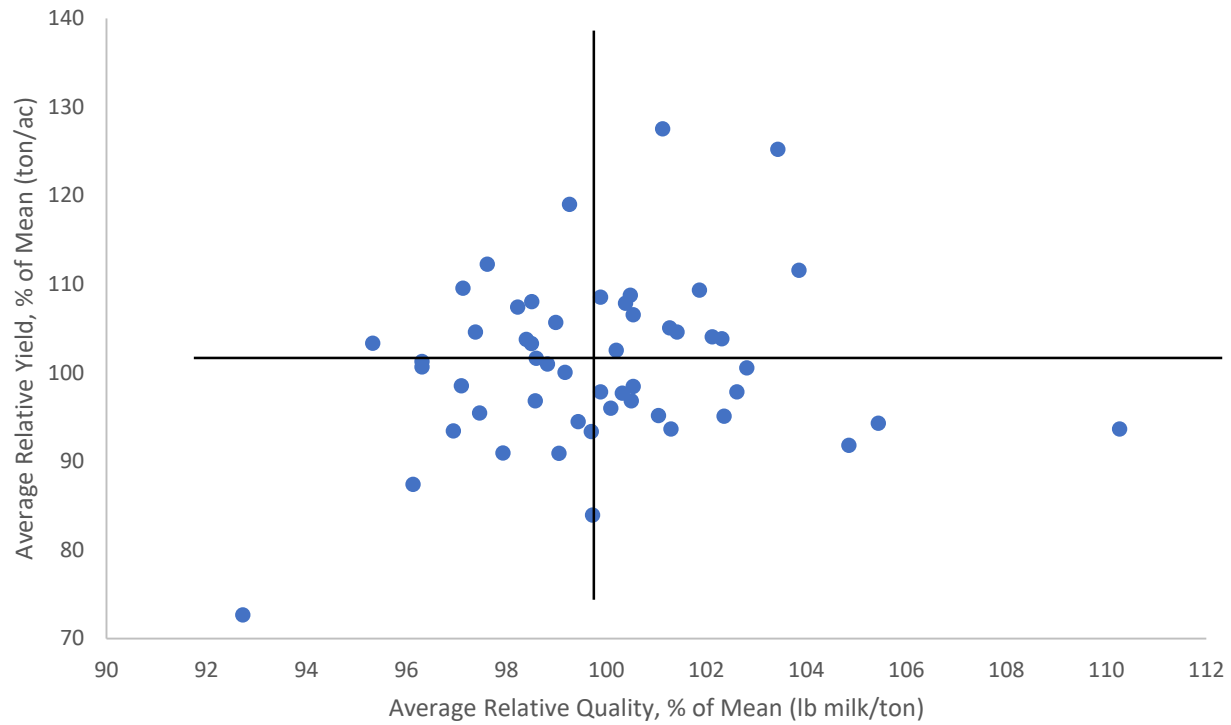
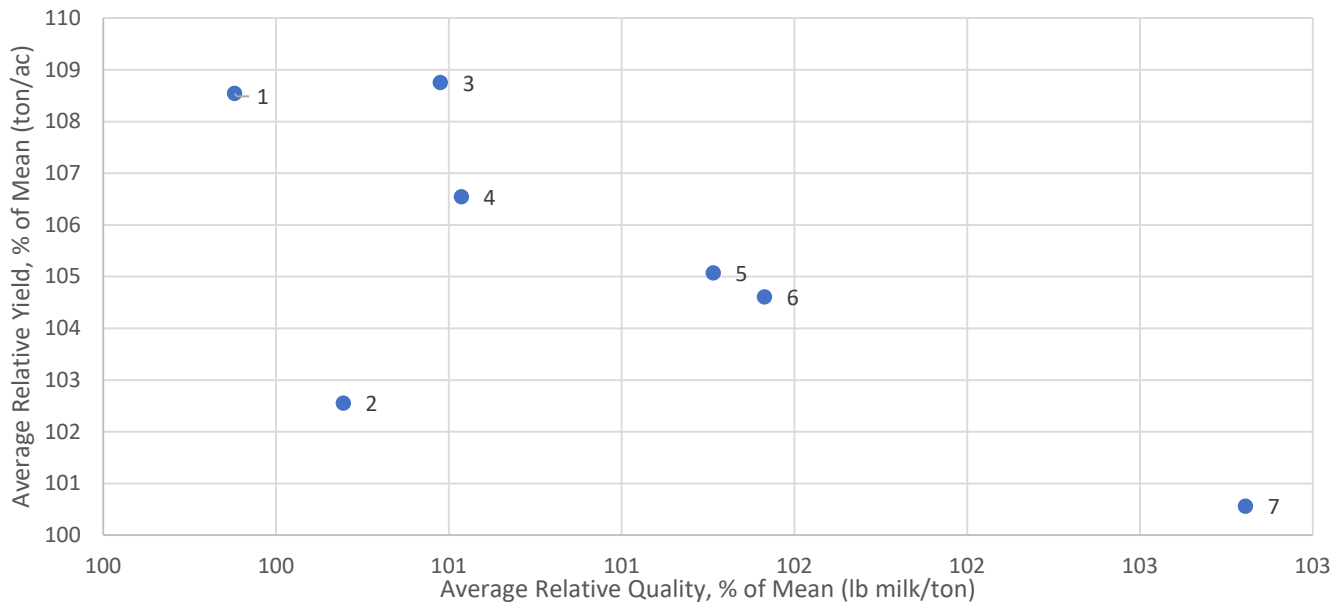


Figure 1. Average relative yield versus quality across sites, 2019



1	Pioneer	P1847VYHR
2	Progeny Ag Products	PGY 7118VT2P
3	Channel	219-77STXRIB
4	Seed Consultants	SCS 1168YHR™
5	NK Brand	NK1808-3111
6	Hubner Seed	H6764RCSS
7	Hubner Seed	H6624RCSS

Figure 2. High-yielding and high-quality hybrids in at least 3 site/year combinations in 2019